

BOECKMAN CORPORATE CENTER

8,712 Sq Ft Flex/Office



LOCATION
 Building B
 27600 SW 95th Avenue
 Wilsonville, OR 97070

MONTHLY RATE
 \$0.50/sqft - Shell
 \$0.85/sqft - Office
 NNN

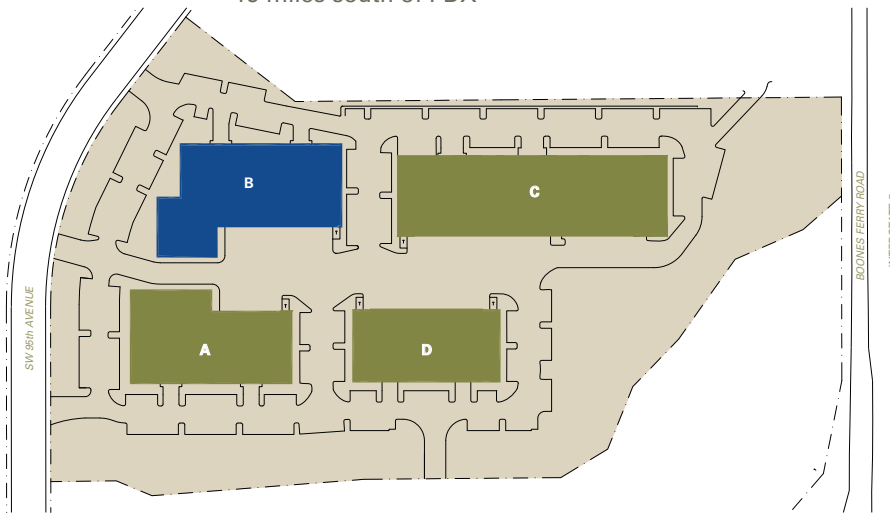
TOTAL SQ FT 8,712
TOTAL OFFICE SQ FT 7,351

LEASING CONTACT
 Sam Briggs
 samb@pactrust.com
 503-624-6300

DOCK HIGH DOORS 1

FEATURES
 Adjacent to I-5
 15 miles south of PDX

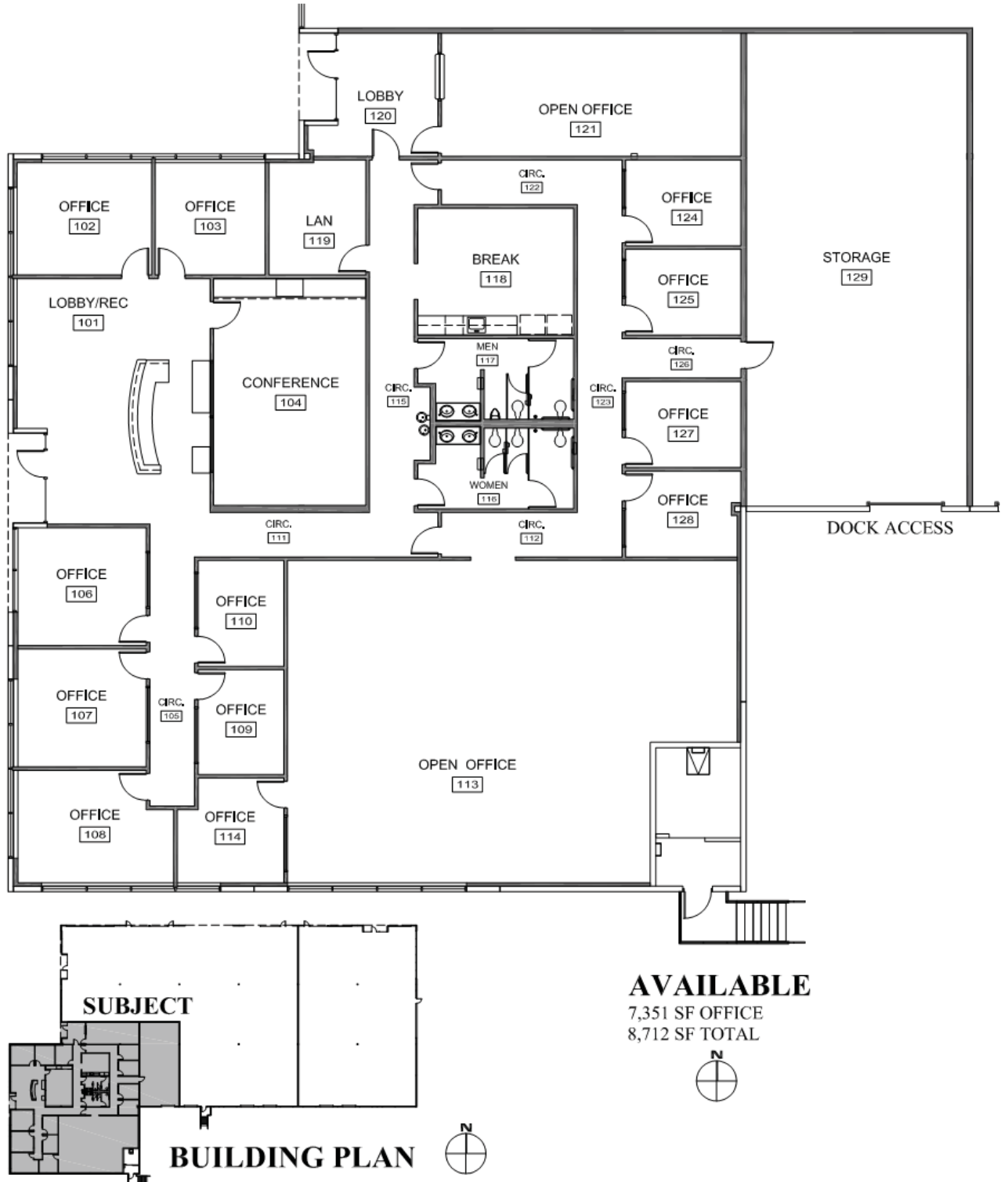
Dave Hicks
 daveh@pactrust.com
 503-624-6300



BOECKMAN CORPORATE CENTER
 Wilsonville, Oregon 97070

BOECKMAN CORPORATE CENTER

Building B • 27600 SW 95th Ave • Wilsonville OR 97070



PACTRUST

Pacific Realty Associates, L.P.

15350 SW Sequoia Parkway, Suite 300, Portland OR 97224 • 503-624-6300 • www.pactrust.com

The square footage and rates quoted herein are subject to change. PacTrust can only guarantee square footage and rates with a signed lease agreement.