

# DAVIS INDUSTRIAL PARK

## 10,000 Sq Ft Warehouse/Distribution



### LOCATION

Building E  
2728 NW Nela St  
Portland OR 97210

### TOTAL SQ FT

10,000 SF

### OFFICE SQ FT

1,930 SF

### DOCK-HIGH DOORS

2

### DRIVE-IN DOORS

1

### FEATURES

Free standing building  
Exposure on NWYeon

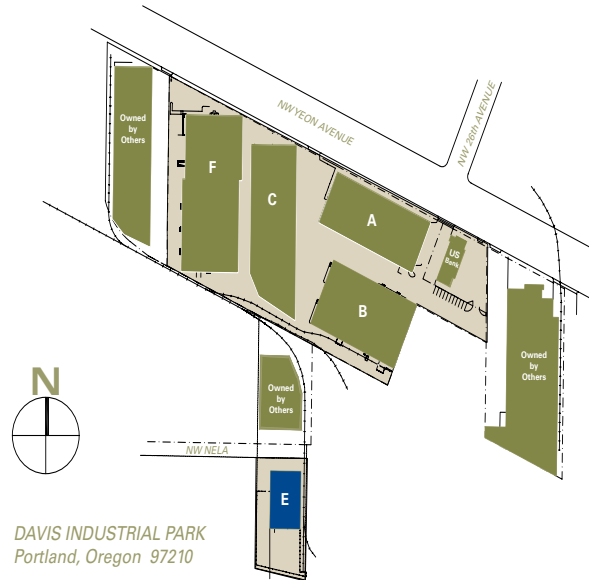
### MONTHLY RATE

\$0.42/sqft - Shell  
\$0.75/sqft - Office  
NNN

### LEASING CONTACT

Sam Briggs  
samb@pactrust.com  
503-624-6300

Dave Hicks  
daveh@pactrust.com  
503-624-6300



DAVIS INDUSTRIAL PARK  
Portland, Oregon 97210

### BUILDING KEY

- A. 3205 NWYeon Avenue
  - B. 3221 NWYeon Avenue
  - C. 3241 - 3255 NWYeon Avenue
  - E. 2728 NW Nela Street
  - F. 3259 - 3265 NWYeon Avenue
- All addresses are  
Portland, OR 97213



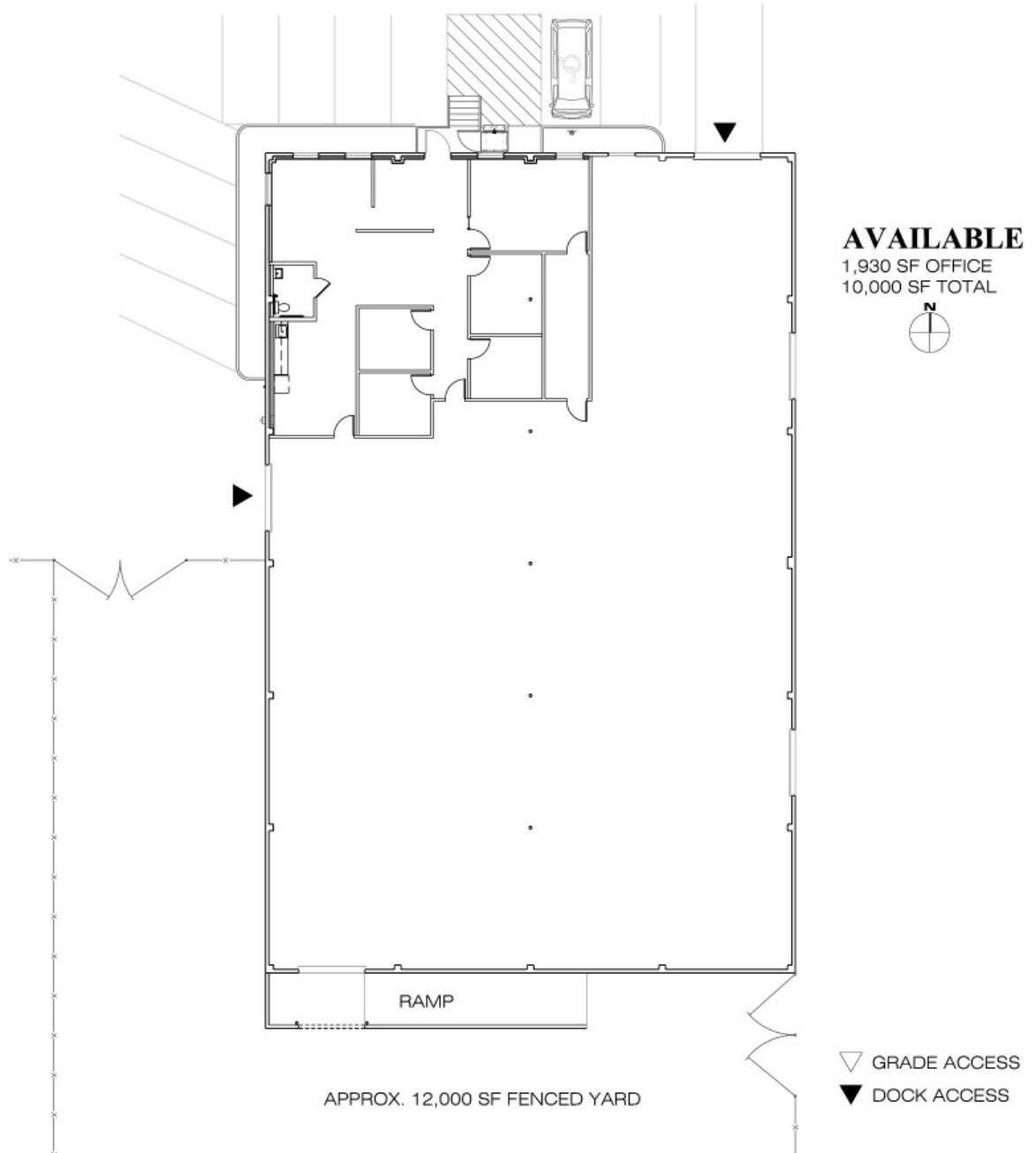
Pacific Realty Associates, L.P.

www.pactrust.com

The square footage and rates quoted herein are subject to change. PacTrust can only guarantee square footage and rates with a signed lease agreement.

# DAVIS INDUSTRIAL PARK

Building E • 2728 NW Nela St • Portland OR 97210



## PACTRUST

Pacific Realty Associates, L.P.

15350 SW Sequoia Parkway, Suite 300, Portland OR 97224 • 503-624-6300 • [www.pactrust.com](http://www.pactrust.com)

The square footage and rates quoted herein are subject to change. PacTrust can only guarantee square footage and rates with a signed lease agreement.