

EVERGREEN BUSINESS PARK

7,555 Sq Ft Office

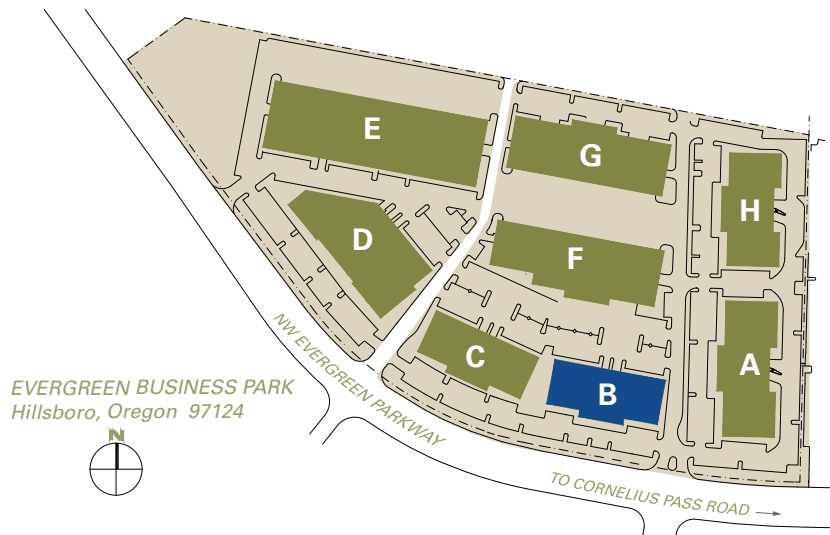


LOCATION
Building B
7245 NW Evergreen Parkway
Suite 100
Hillsboro OR 97124

MONTHLY RATE \$1.00
NNN

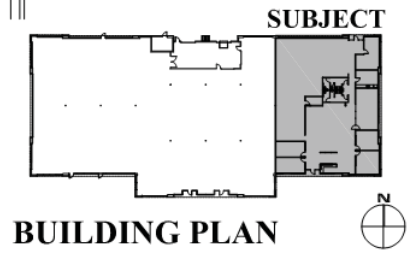
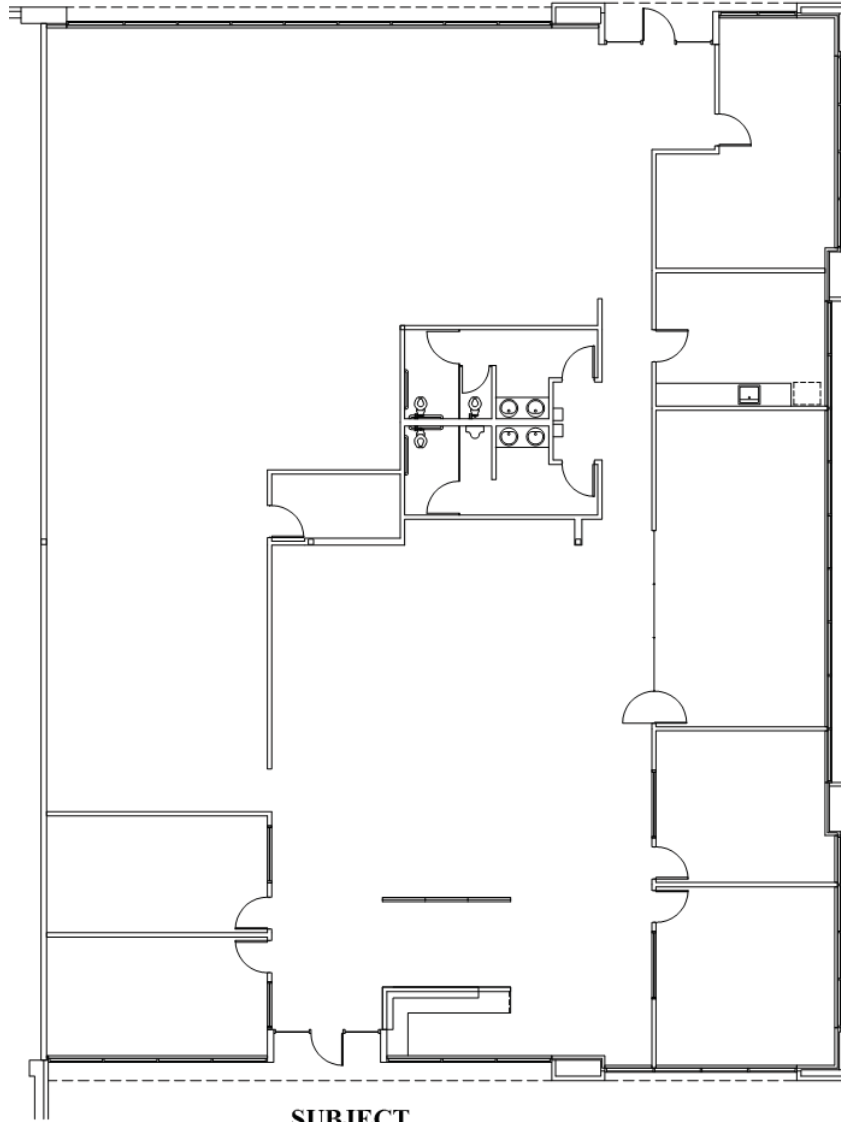
LEASING CONTACT Sam Briggs
samb@pactrust.com
503-624-6300

TOTAL SQ FT 7,555 SF
FEATURES Exposure on Evergreen Parkway
1/4 mile from Intel's Ronler Acres
PARKING RATIO 4/1,000



EVERGREEN BUSINESS PARK

Building B • 7245 NW Evergreen Parkway, Suite 100 • Hillsboro OR 97124



AVAILABLE
7,555 SF TOTAL



PACTRUST

Pacific Realty Associates, L.P.

15350 SW Sequoia Parkway, Suite 300, Portland OR 97224 • 503-624-6300 • www.pactrust.com

The square footage and rates quoted herein are subject to change. PacTrust can only guarantee square footage and rates with a signed lease agreement.