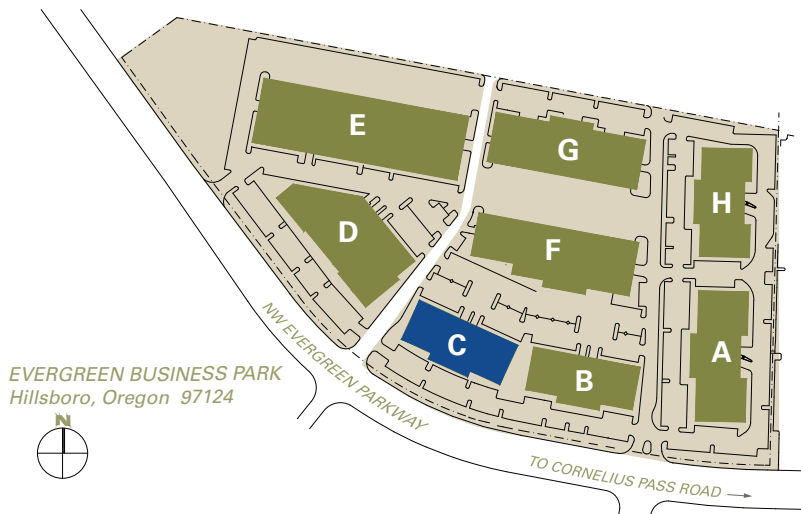


EVERGREEN BUSINESS PARK

9,438 Sq Ft Office/Warehouse

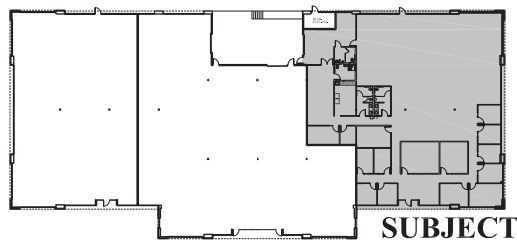
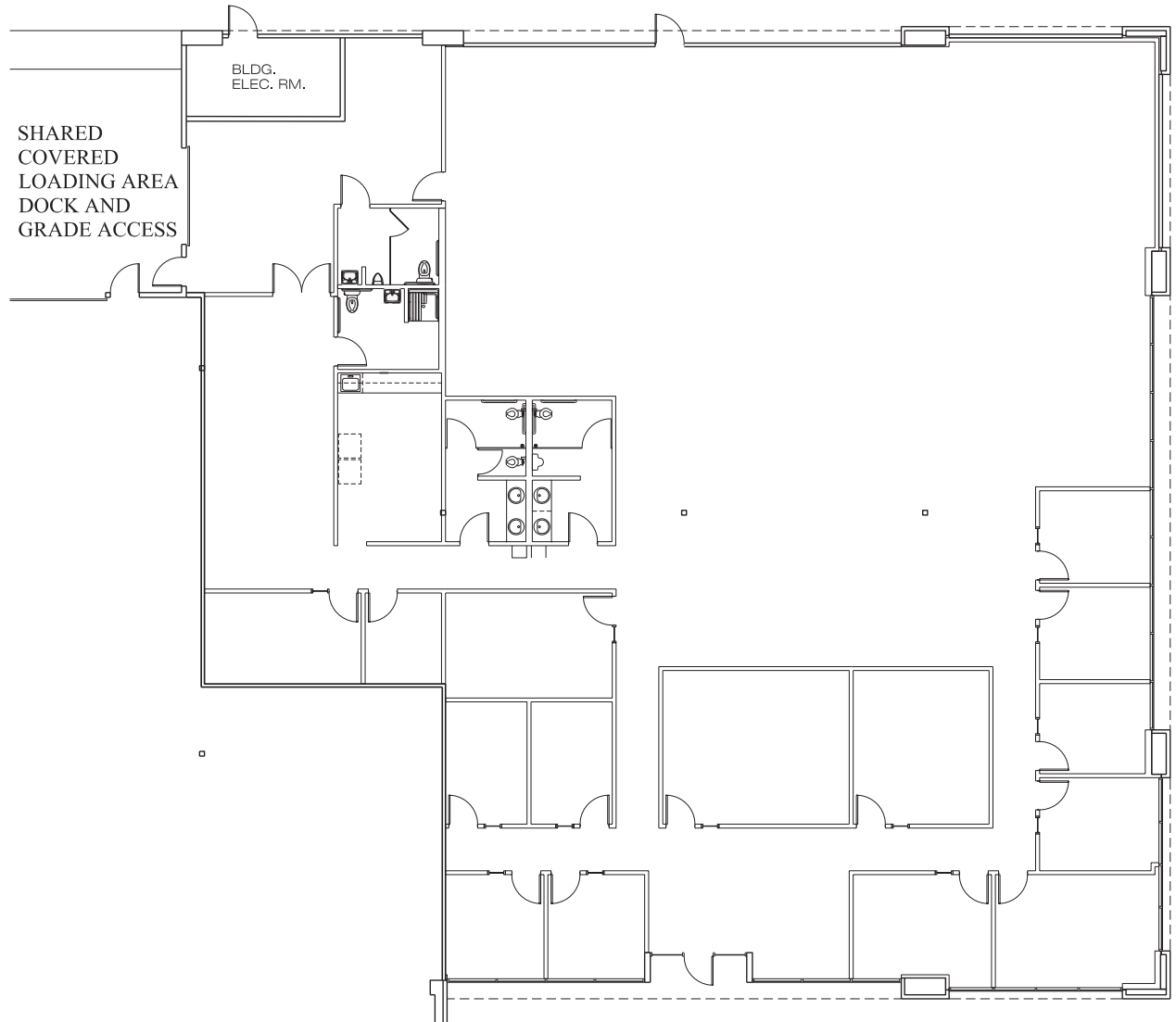


LOCATION	Building C 7235 NW Evergreen Parkway Suite 100 Hillsboro OR 97124	MONTHLY RATE	\$1.00/sqft - Blended NNN
TOTAL SQ FT	9,438 SF	LEASING CONTACT	Sam Briggs samb@pactrust.com 503-624-6300
OFFICE SQ FT	8,319 SF	DAVE HICKS	Dave Hicks daveh@pactrust.com 503-624-6300
FEATURES	Exposure on Evergreen Parkway 1/4 mile from Intel's Ronler Acres End-Cap Unit		



EVERGREEN BUSINESS PARK

Building C • 7235 NW Evergreen Parkway, Suite 100 • Hillsboro OR 97124



BUILDING PLAN



AVAILABLE

8,319 SF OFFICE

9,438 SF TOTAL



PACTRUST

Pacific Realty Associates, L.P.

15350 SW Sequoia Parkway, Suite 300, Portland OR 97224 • 503-624-6300 • www.pactrust.com

The square footage and rates quoted herein are subject to change. PacTrust can only guarantee square footage and rates with a signed lease agreement.