

EVERGREEN BUSINESS PARK

6,290 Sq Ft Office



LOCATION Building C
7235 NW Evergreen Parkway
Suite 600
Hillsboro OR 97124

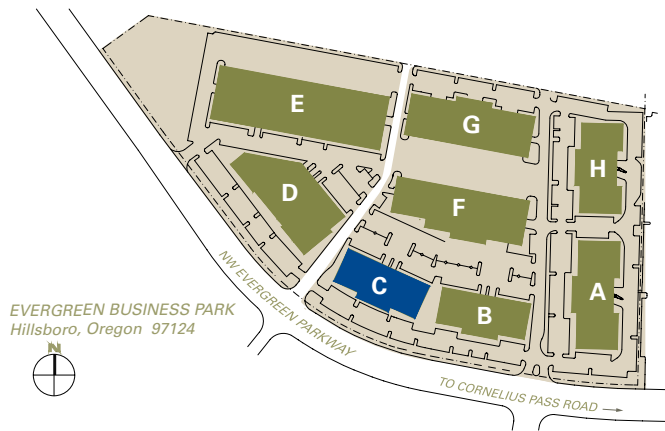
TOTAL SQ FT 6,290 SF
FEATURES Shared covered dock & grade access
Exposure on Evergreen Parkway
1/4 mile from Intel's Ronler Acres

PARKING 4/1,000
CLEAR HEIGHT 15'

MONTHLY RATE \$1.00
NNN

LEASING CONTACT Sam Briggs
samb@pactrust.com
503-624-6300

Dave Hicks
daveh@pactrust.com
503-624-6300

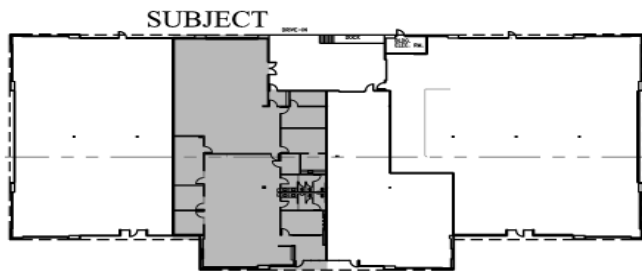
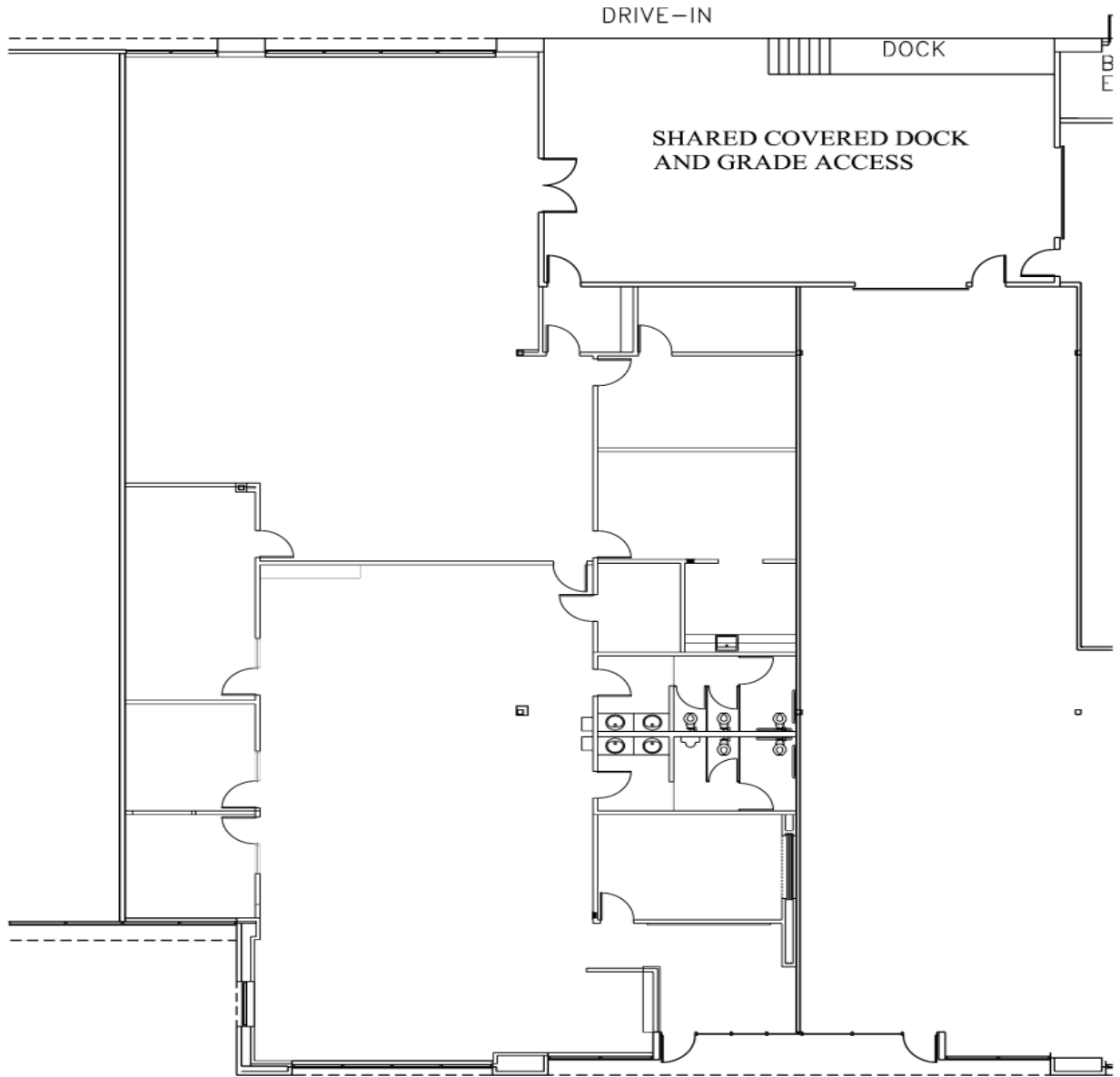


BUILDING KEY

- A. 7425 NW Evergreen Parkway
 - B. 7245 NW Evergreen Parkway
 - C. 7235 NW Evergreen Parkway
 - D. 7175 NW Evergreen Parkway
 - E. 7205 NW Evergreen Parkway
 - F. 7275 NW Evergreen Parkway
 - G. 7315 NW Evergreen Parkway
 - H. 7395 NW Evergreen Parkway
- All addresses are Hillsboro OR 97124

EVERGREEN BUSINESS PARK

Building C • 7235 NW Evergreen Parkway, Suite 600 • Hillsboro OR 97124



BUILDING PLAN
NOT TO SCALE

AVAILABLE
6,290 SF TOTAL



PACTRUST

Pacific Realty Associates, L.P.

15350 SW Sequoia Parkway, Suite 300, Portland OR 97224 • 503-624-6300 • www.pactrust.com

The square footage and rates quoted herein are subject to change. PacTrust can only guarantee square footage and rates with a signed lease agreement.