

EVERGREEN BUSINESS PARK

6,464 Sq Ft Office/Warehouse



LOCATION

Building C
7235 NW Evergreen Parkway
Suite 800
Hillsboro OR 97124

MONTHLY RATE

\$1.00/sqft - Blended
NNN

TOTAL SQ FT

6,464 SF

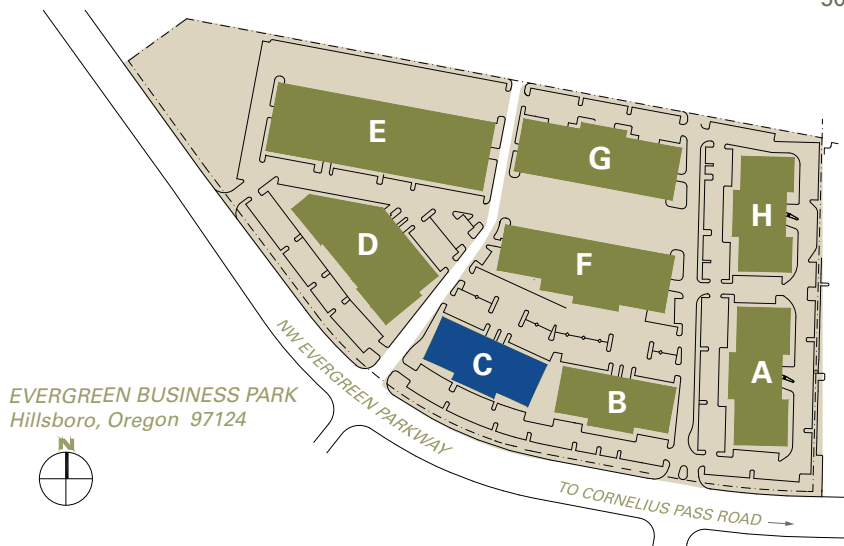
FEATURES

Exposure on Evergreen Parkway
1/4 mile from Intel's Ronler Acres

LEASING CONTACT

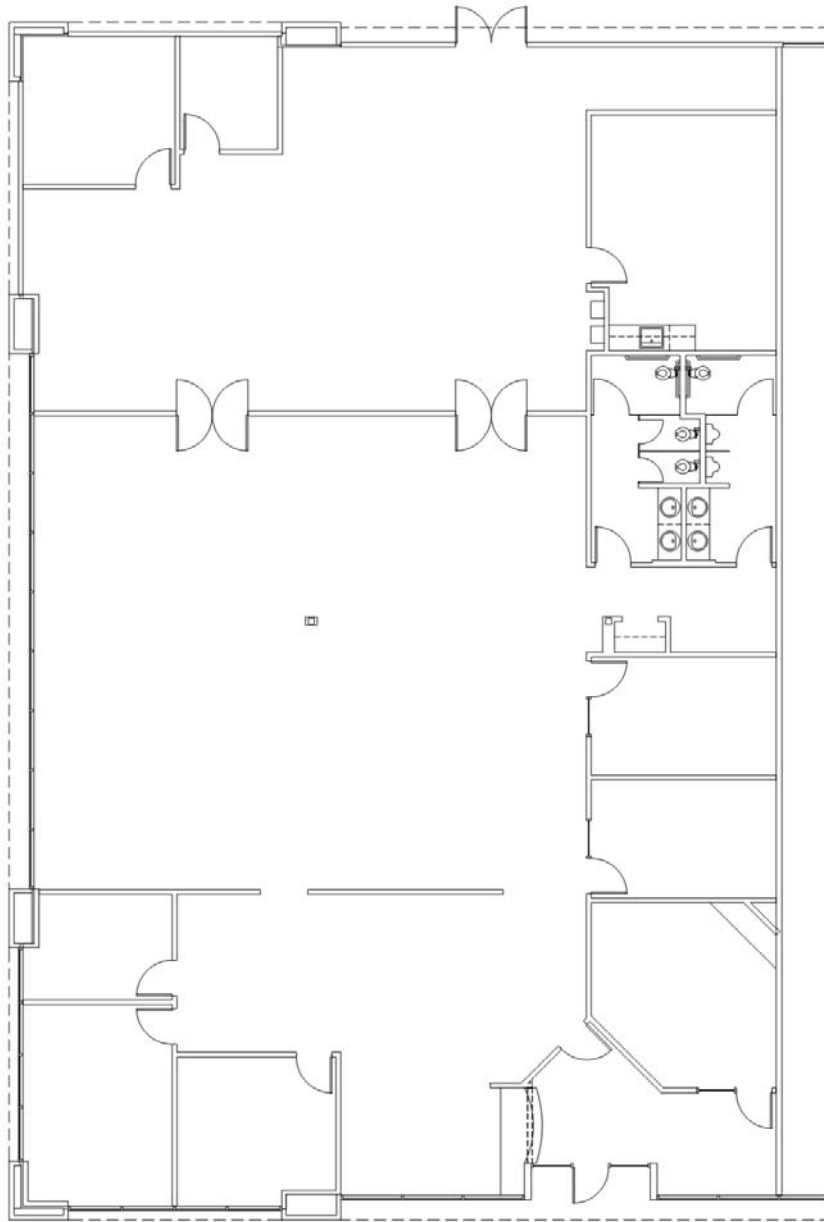
Sam Briggs
samb@pactrust.com
503-624-6300

Dave Hicks
daveh@pactrust.com
503-624-6300



EVERGREEN BUSINESS PARK

Building C • 7235 NW Evergreen Parkway, Suite 800 • Hillsboro OR 97124



AVAILABLE
6,464 SF TOTAL



BUILDING PLAN
NOT TO SCALE



PACTRUST

Pacific Realty Associates, L.P.

15350 SW Sequoia Parkway, Suite 300, Portland OR 97224 • 503-624-6300 • www.pactrust.com

The square footage and rates quoted herein are subject to change. PacTrust can only guarantee square footage and rates with a signed lease agreement.