

EVERGREEN BUSINESS PARK

12,857 Sq Ft Office/Flex



LOCATION Building D
7175 NW Evergreen Parkway
Suite 400
Hillsboro OR 97124

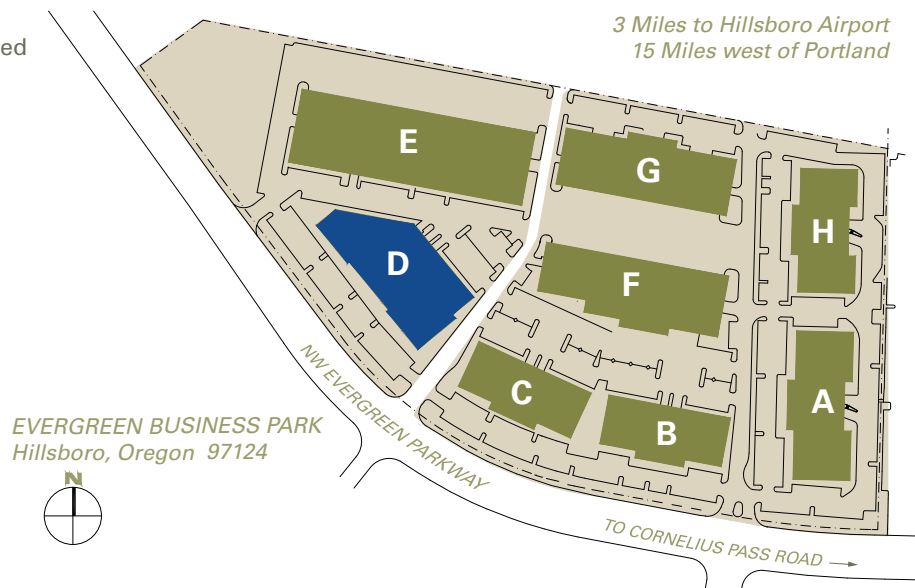
TOTAL SQ FT 12,857

FEATURES End cap
Immediately east of Intel's Ronler Acres

MONTHLY RATE \$1.00 blended
NNN

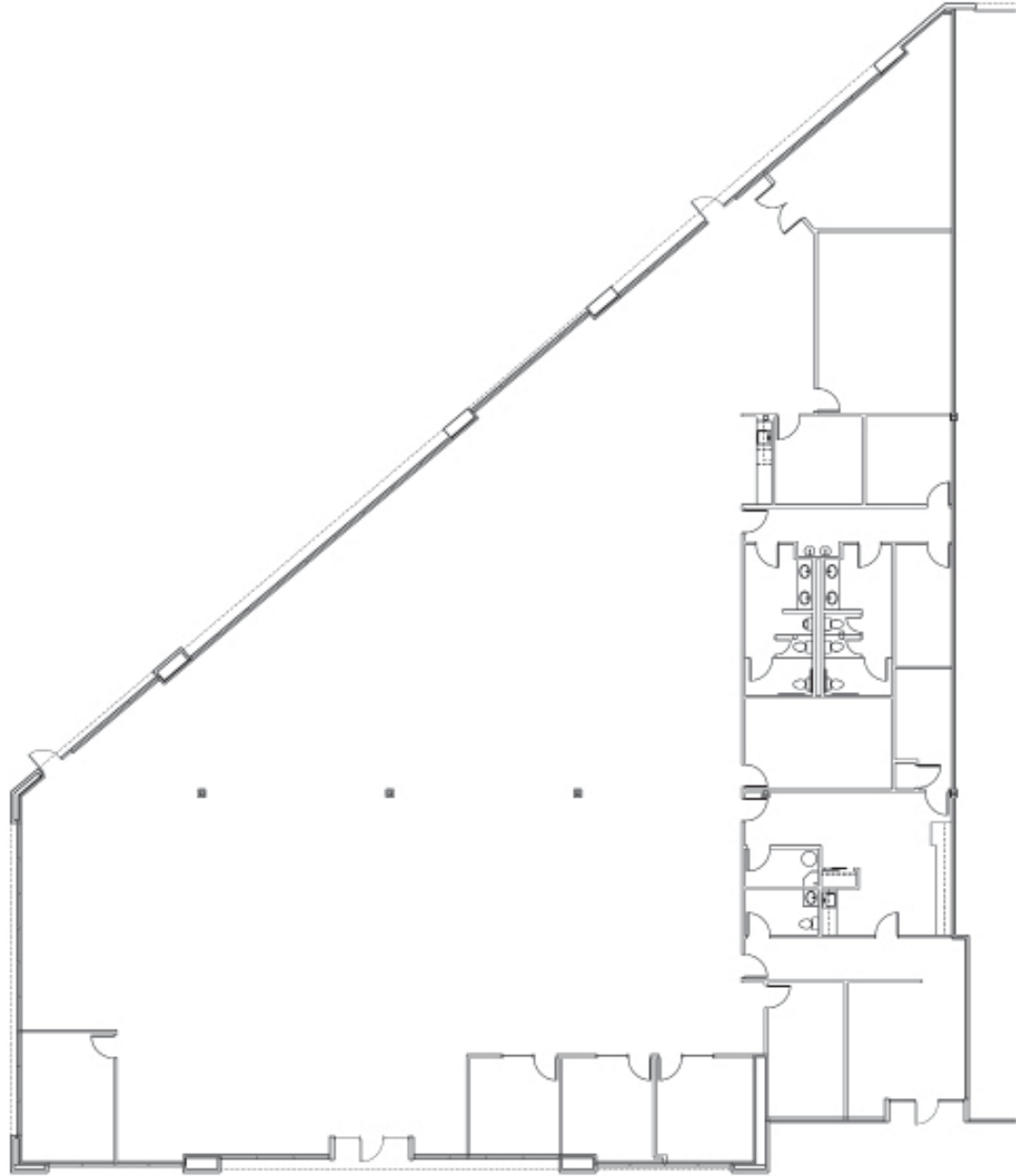
LEASING CONTACT Sam Briggs
samb@pactrust.com
503-624-6300

Dave Hicks
daveh@pactrust.com
503-624-6300



EVERGREEN BUSINESS PARK

Building D • 7175 NW Evergreen Parkway, Suite 400 • Hillsboro OR 97124



SUBJECT
BUILDING PLAN

AVAILABLE
12,857 SF TOTAL



PACTRUST

Pacific Realty Associates, L.P.

15350 SW Sequoia Parkway, Suite 300, Portland OR 97224 • 503-624-6300 • www.pactrust.com

The square footage and rates quoted herein are subject to change. PacTrust can only guarantee square footage and rates with a signed lease agreement.