

# EVERGREEN BUSINESS PARK

9,430 Sq Ft Shell



**LOCATION** Building H  
7395 NW Evergreen Parkway  
Suite 100  
Hillsboro OR 97124

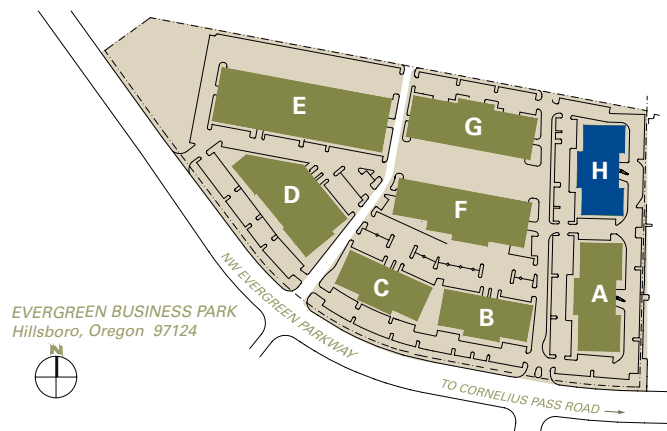
**TOTAL SQ FT** 9,430 SF  
**DRIVE-IN DOORS** 1  
**CLEAR HEIGHT** 16'

**FEATURES** End-cap space  
1/4 mile from Intel's Ronler Acres

**MONTHLY RATE** \$0.85 blended  
NNN

**LEASING CONTACT** Sam Briggs  
samb@pactrust.com  
503-624-6300

Dave Hicks  
daveh@pactrust.com  
503-624-6300

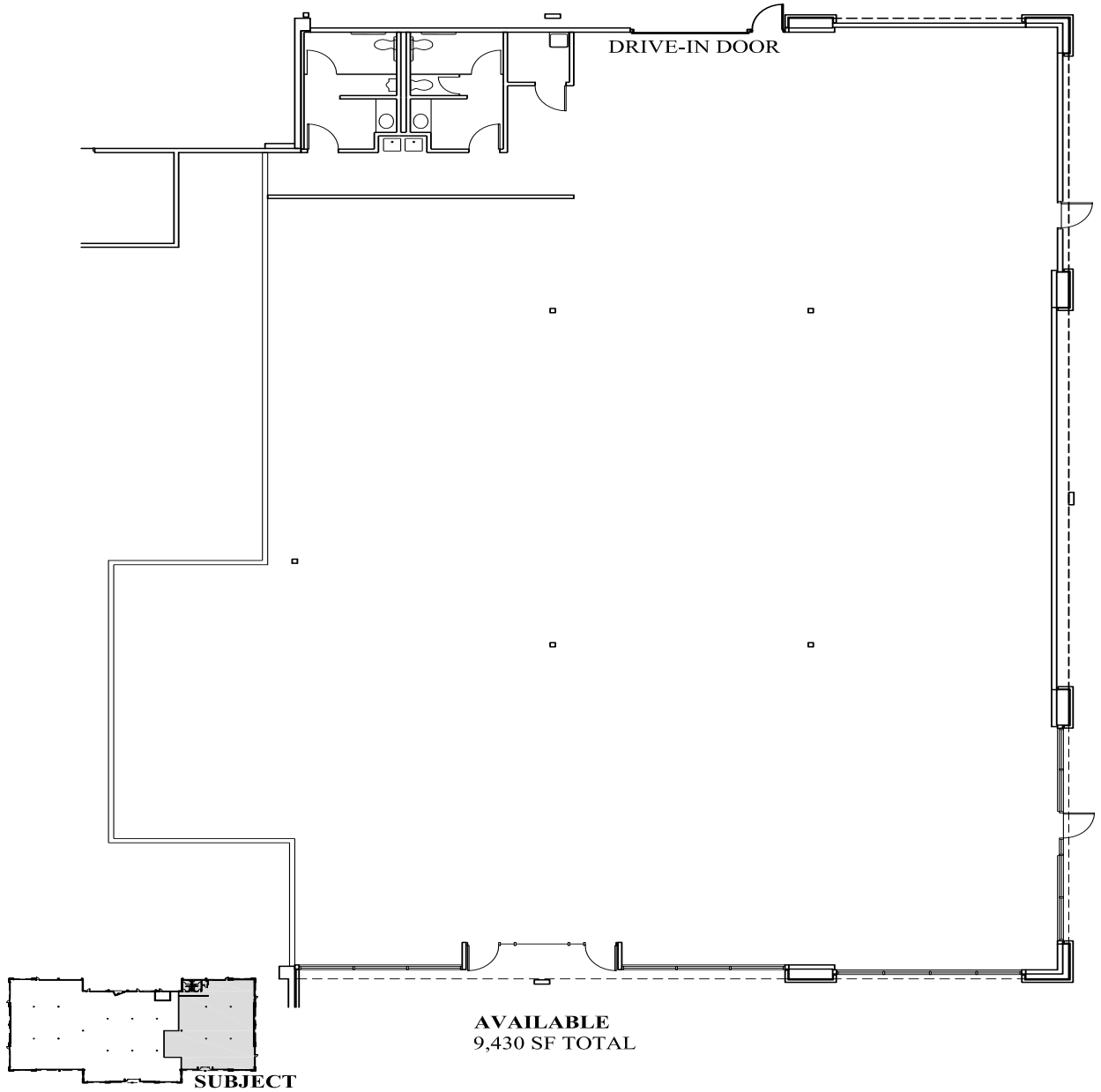


## BUILDING KEY

- A. 7425 NW Evergreen Parkway
  - B. 7245 NW Evergreen Parkway
  - C. 7235 NW Evergreen Parkway
  - D. 7175 NW Evergreen Parkway
  - E. 7205 NW Evergreen Parkway
  - F. 7275 NW Evergreen Parkway
  - G. 7315 NW Evergreen Parkway
  - H. 7395 NW Evergreen Parkway
- All addresses are Hillsboro OR 97124

# EVERGREEN BUSINESS PARK

Building H • 7395 NW Evergreen Parkway, Suite 100 • Hillsboro OR 97124



**BUILDING KEY PLAN**  
NOT TO SCALE



## PACTRUST

Pacific Realty Associates, L.P.

15350 SW Sequoia Parkway, Suite 300, Portland OR 97224 • 503-624-6300 • [www.pactrust.com](http://www.pactrust.com)

The square footage and rates quoted herein are subject to change. PacTrust can only guarantee square footage and rates with a signed lease agreement.