

FIVE OAKS WEST BUSINESS PARK

13,019 Sq Ft Light Industrial



LOCATION

Building 310
23515 NW Clara Lane
Suite 190
Hillsboro OR 97124

LEASING CONTACT

Sam Briggs
samb@pactrust.com
503-624-6300

TOTAL SQ FT OFFICE SQ FT FEATURES

13,019 SF
1,350 SF
Great access to Highway 26
Close to Intel

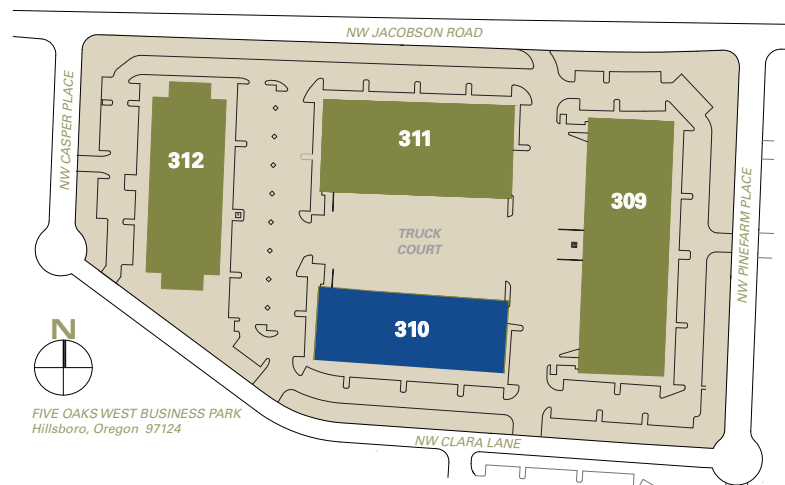
Dave Hicks
daveh@pactrust.com
503-624-6300

DOCK-HIGH DOORS DRIVE-IN DOORS CLEAR HEIGHT

4
1
20 feet

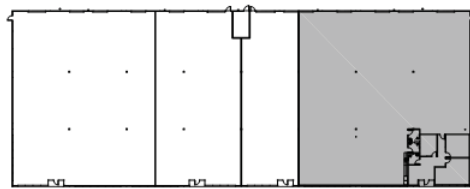
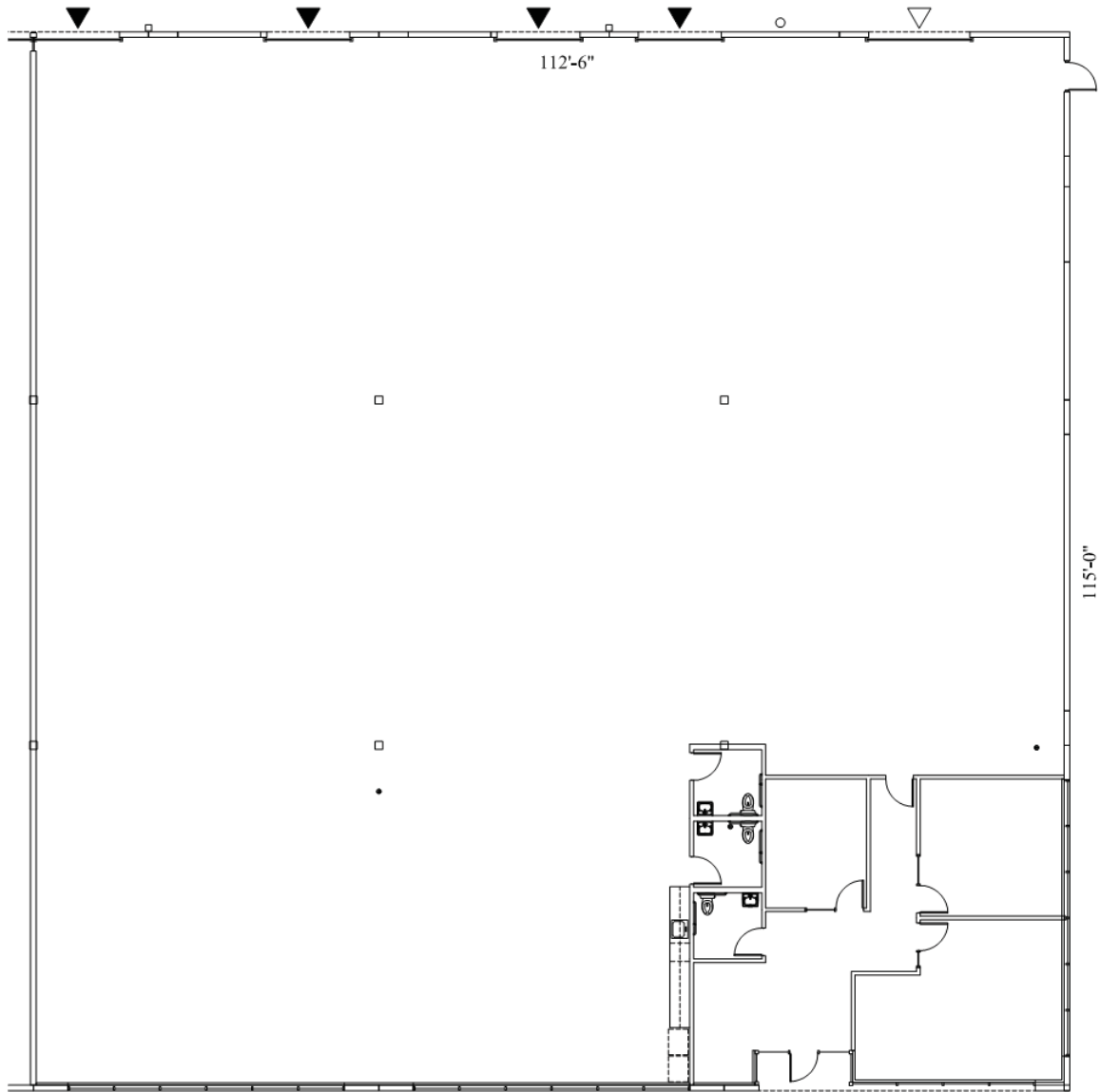
MONTHLY RATE

\$0.60/sqft - Shell
\$0.90/sqft - Office
NNN



FIVE OAKS WEST BUSINESS PARK

Building 310 • 23515 NW Clara Lane, Suite 190 • Hillsboro OR 97124



BUILDING PLAN

SUBJECT



AVAILABLE

13,019 SF TOTAL
1,350 SF OFFICE



WAREHOUSE CLEAR HT: 20'-0"

▽ GRADE ACCESS

▼ DOCK ACCESS



Pacific Realty Associates, L.P.

15350 SW Sequoia Parkway, Suite 300, Portland OR 97224 • 503-624-6300 • www.pactrust.com

The square footage and rates quoted herein are subject to change. PacTrust can only guarantee square footage and rates with a signed lease agreement.