

# INTERNATIONAL CORPORATE CENTER

## 8,190 Sq Ft Office

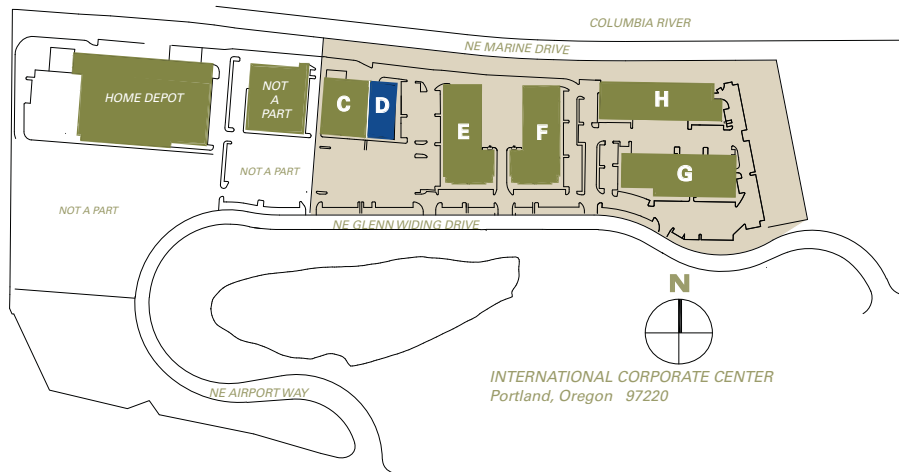


**LOCATION**  
 Building D  
 11731 NE Glenn Widing Drive  
 Portland OR 97220

**MONTHLY RATE**  
 \$17.00/sqft  
 NNN

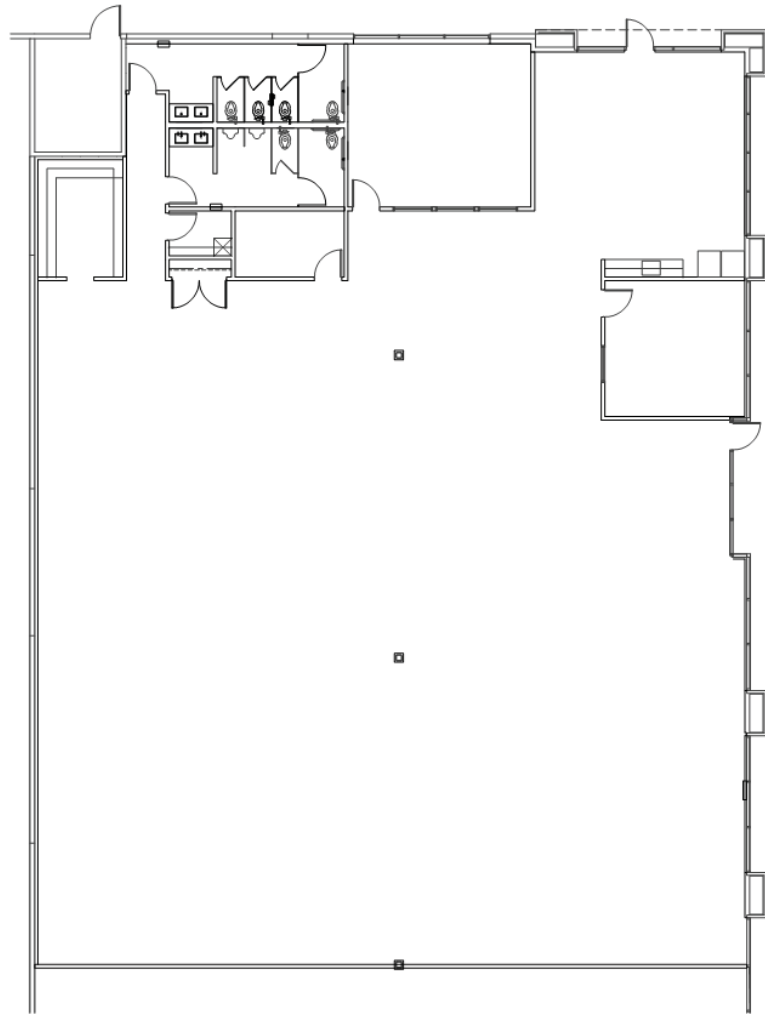
**LEASING CONTACT**  
 Matt Krueger  
 mattk@pactrust.com  
 503-624-6300

**TOTAL SQ FT**  
 8,190 SF  
**PARKING RATIO**  
 5/1,000  
**FEATURES**  
 Corner space  
 Great access to I-205  
 4 miles to PDX

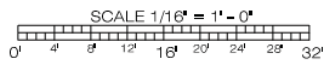


# INTERNATIONAL CORPORATE CENTER

Building D • 11731 NE Glenn Widing Drive • Portland OR 97220



PREMISES  
8,190 SF OFFICE



SUBJECT



BUILDING KEY PLAN  
NOT TO SCALE

## INTERNATIONAL CORPORATE CENTER

BUILDING D (PTR #023)  
11731 NE GLENN WIDING DRIVE  
PORTLAND, OR 97220

# PACTRUST

Pacific Realty Associates, L.P.

15350 SW Sequoia Parkway, Suite 300, Portland OR 97224 • 503-624-6300 • [www.pactrust.com](http://www.pactrust.com)

The square footage and rates quoted herein are subject to change. PacTrust can only guarantee square footage and rates with a signed lease agreement.