

INTERNATIONAL CORPORATE CENTER

34,978 Sq Ft Flex

Divisible



LOCATION

Building G
12029 NE Glenn Widing Drive
Portland OR 97220

FEATURES

End-cap space
Great access to I-205
10 minutes to PDX
Retail, restaurants & services
nearby

TOTAL SQ FT

34,978 SF

OFFICE SQ FT

16,131 SF

DOCK HIGH DOORS

10

DRIVE-IN DOORS

1

CLEAR HEIGHT

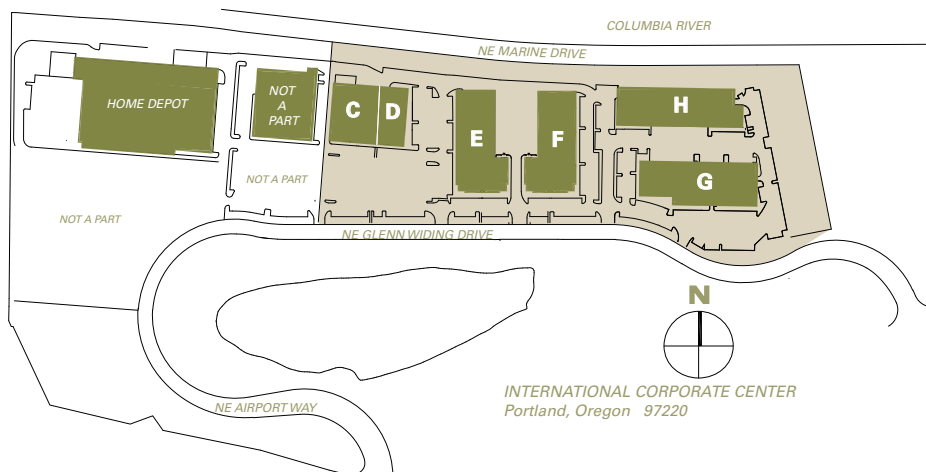
18'

MONTHLY RATE

\$0.60/sqft - Shell
\$0.90/sqft - Office
NNN

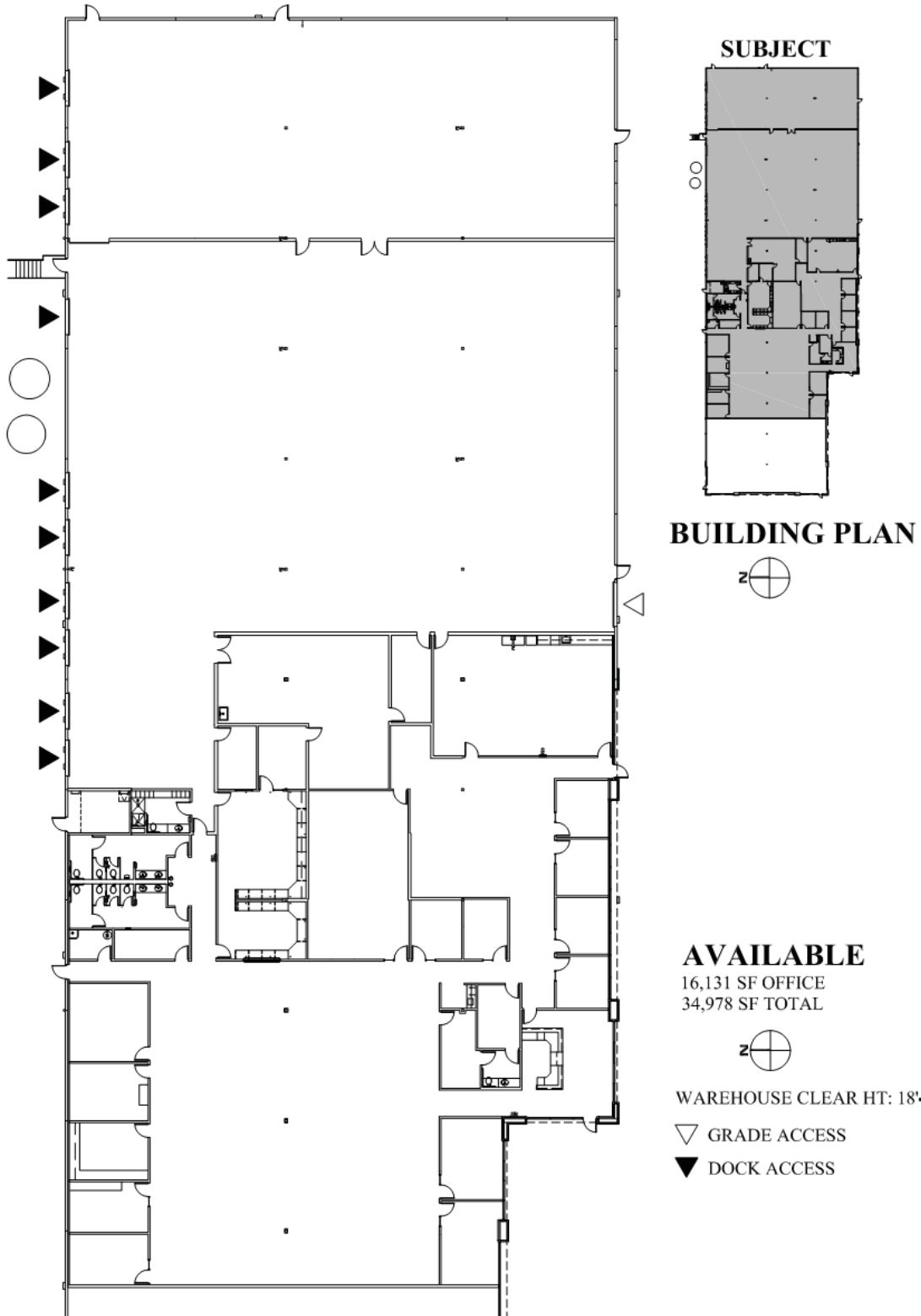
LEASING CONTACT

Matt Krueger
mattk@pactrust.com
503-624-6300



INTERNATIONAL CORPORATE CENTER

Building G • 12029 NE Glenn Widing Drive • Portland OR 97220



PACTRUST

Pacific Realty Associates, L.P.

15350 SW Sequoia Parkway, Suite 300, Portland OR 97224 • 503-624-6300 • www.pactrust.com

The square footage and rates quoted herein are subject to change. PacTrust can only guarantee square footage and rates with a signed lease agreement.