

# OREGON BUSINESS PARK I

## 67,034 Sq Ft Light Industrial



<b>LOCATION</b>	Building 10 16640 SW 72nd Avenue Portland OR 97224
<b>TOTAL SQ FT</b>	67,034 SF
<b>OFFICE SQ FT</b>	25,827 SF
<b>DOCK-HIGH DOORS</b>	8
<b>DRIVE-IN DOORS</b>	1
<b>OVERHEAD DOORS</b>	2 with dock & grade access
<b>CLEAR HEIGHT</b>	24'
<b>FEATURE</b>	Exposure on SW 72nd Avenue
<b>MONTHLY RATE</b>	\$0.40/sqft - Shell \$0.75/sqft - Office NNN

**LEASING CONTACT** Sam Briggs  
samb@pactrust.com  
503-624-6300

Dave Hicks  
daveh@pactrust.com  
503-624-6300



**OREGON BUSINESS PARK I**  
Portland, Oregon 97224

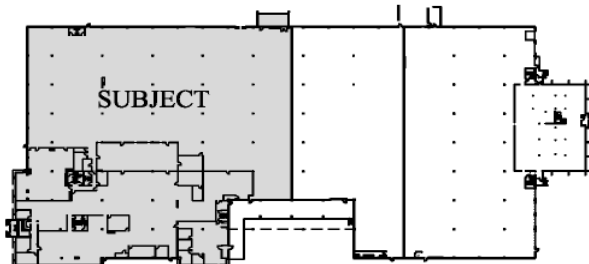
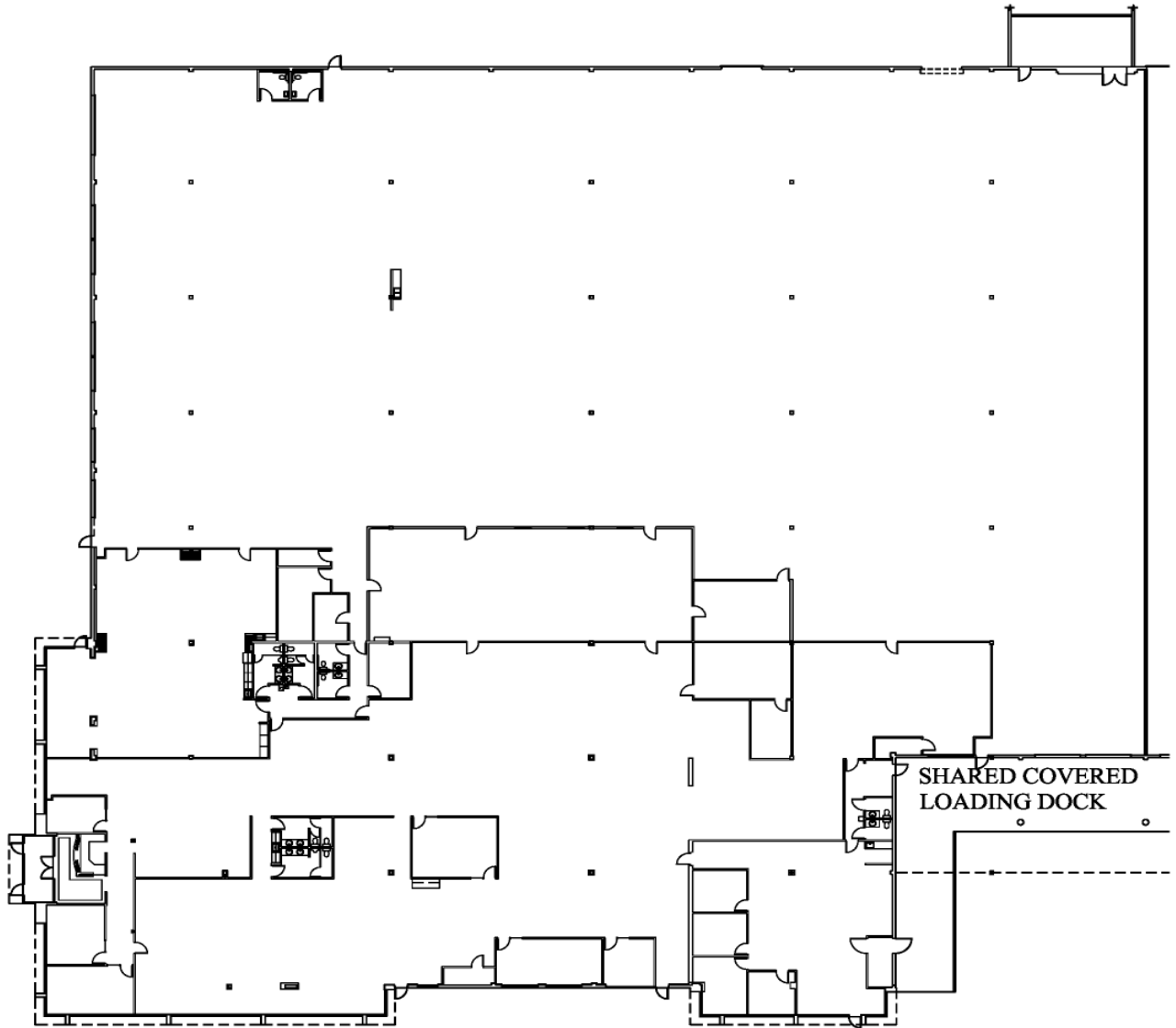
### BUILDING KEY

1. 16120 - 16192 SW 72nd Avenue
2. 16200 - 16290 SW 72nd Avenue
3. 16300 - 16330 SW 72nd Avenue
4. 16332 - 16358 SW 72nd Avenue
5. 16416 - 16444 SW 72nd Avenue
6. 16460 - 16490 SW 72nd Avenue
7. 16500 - 16520 SW 72nd Avenue
8. 16364 - 16398 SW 72nd Avenue
9. 16550 - 16578 SW 72nd Avenue
10. 16600 - 16640 SW 72nd Avenue
11. 16580 - 16598 SW 72nd Avenue
12. 16650 SW 72nd Avenue
14. 16756 - 16798 SW 72nd Avenue
15. 15860 - 15870 SW 72nd Avenue
16. 16700 - 16748 SW 72nd Avenue
17. 15912 - 15954 SW 72nd Avenue
18. 16100 - 16112 SW 72nd Avenue

All addresses are  
Portland OR 97224

# OREGON BUSINESS PARK I

Building 10 • 16640 SW 72nd Avenue • Portland OR 97224



**BUILDING PLAN**  
NOT TO SCALE



## AVAILABLE

67,034 SF TOTAL  
25,827 SF OFFICE



# PACTRUST

Pacific Realty Associates, L.P.

15350 SW Sequoia Parkway, Suite 300, Portland OR 97224 • 503-624-6300 • [www.pactrust.com](http://www.pactrust.com)

The square footage and rates quoted herein are subject to change. PacTrust can only guarantee square footage and rates with a signed lease agreement.