

# OREGON BUSINESS PARK I

## 6,250 Sq Ft Warehouse/Distribution



**LOCATION**

Building 14  
16756 SW 72nd Avenue  
Portland OR 97224

**MONTHLY RATE**

\$0.60/sqft - Shell  
\$0.85/sqft - Office  
NNN

**TOTAL SQ FT**  
**OFFICE SQ FT**

6,250 SF  
1,085 SF

**LEASING CONTACT**

Sam Briggs  
samb@pactrust.com  
503-624-6300

**DOCK-HIGH DOORS**  
**DRIVE-IN DOORS**

4  
2

Dave Hicks  
daveh@pactrust.com  
503-624-6300

**FEATURES**

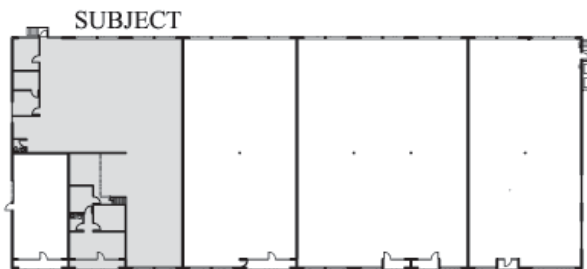
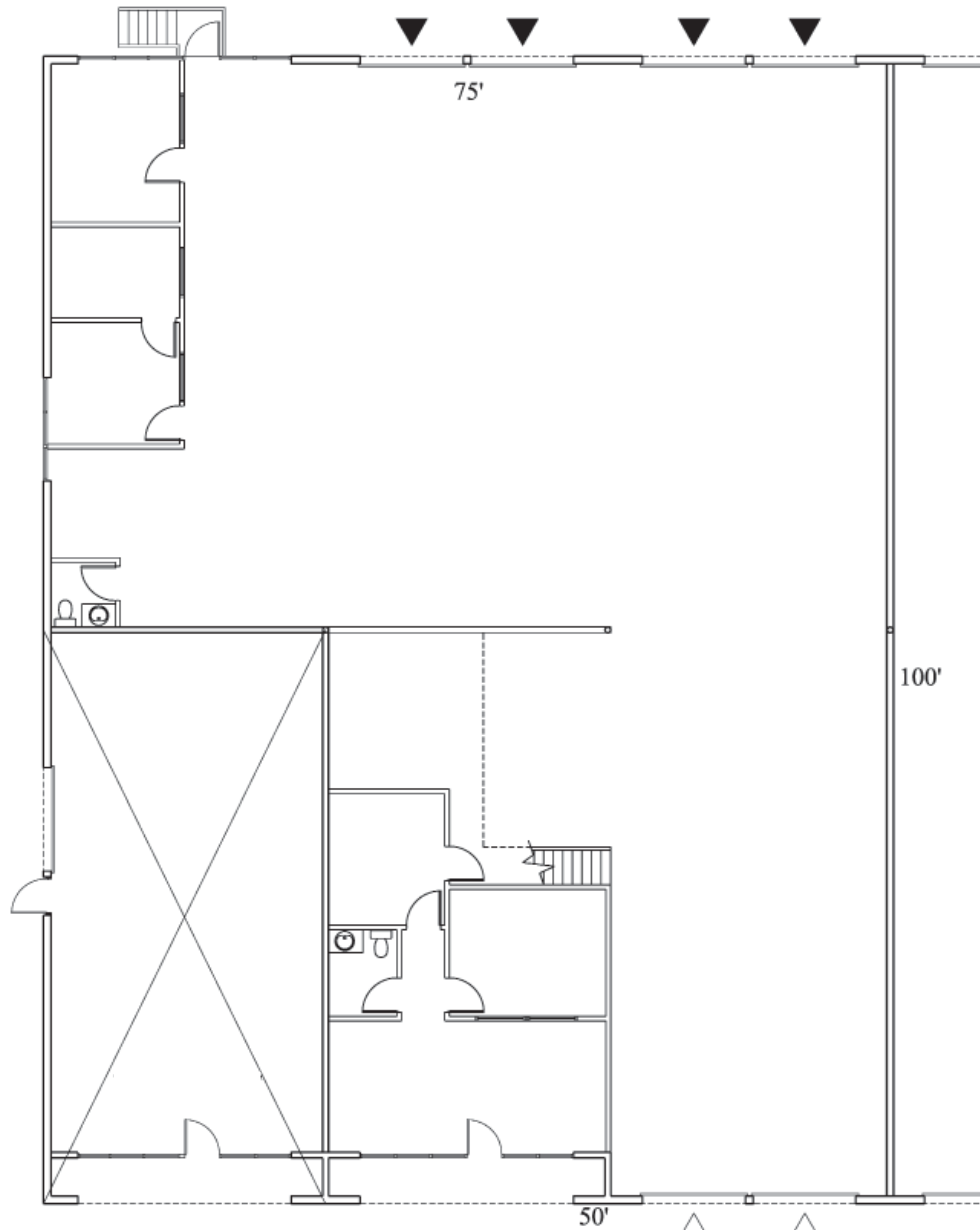
Excellent freeway access



**N** OREGON BUSINESS PARK I  
Portland, Oregon 97224

# OREGON BUSINESS PARK I

Building 14 • 16756 SW 72nd Avenue • Portland OR 97224



**KEY PLAN**  
NOT TO SCALE



## AVAILABLE

1,085 SF OFFICE  
6,250 SF TOTAL



WAREHOUSE CLEAR HT: 14'-0"

▽ GRADE ACCESS

▼ DOCK ACCESS

# PACTRUST

Pacific Realty Associates, L.P.

15350 SW Sequoia Parkway, Suite 300, Portland OR 97224 • 503-624-6300 • www.pactrust.com

The square footage and rates quoted herein are subject to change. PacTrust can only guarantee square footage and rates with a signed lease agreement.