

OREGON BUSINESS PARK I

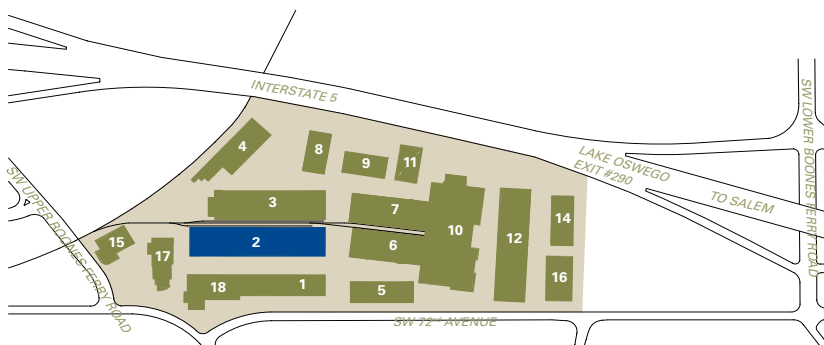
24,500 Sq Ft Warehouse/Distribution



LOCATION	Building 2 16200 SW 72nd Avenue Portland OR 97224
TOTAL SQ FT	24,500 SF
OFFICE SQ FT	1,125 SF
DOCK DOORS	12 Dock high, 1 drive-in, rail served
CLEAR HEIGHT	20'
FEATURE	Warehouse/distribution space Near the I-5/Highway 217 interchange
MONTHLY RATE	\$0.40/sqft - Shell \$0.85/sqft - Office NNN

LEASING CONTACT Sam Briggs
samb@pactrust.com
503-624-6300

Dave Hicks
daveh@pactrust.com
503-624-6300



 OREGON BUSINESS PARK I
Portland, Oregon 97224

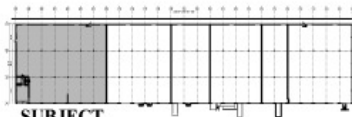
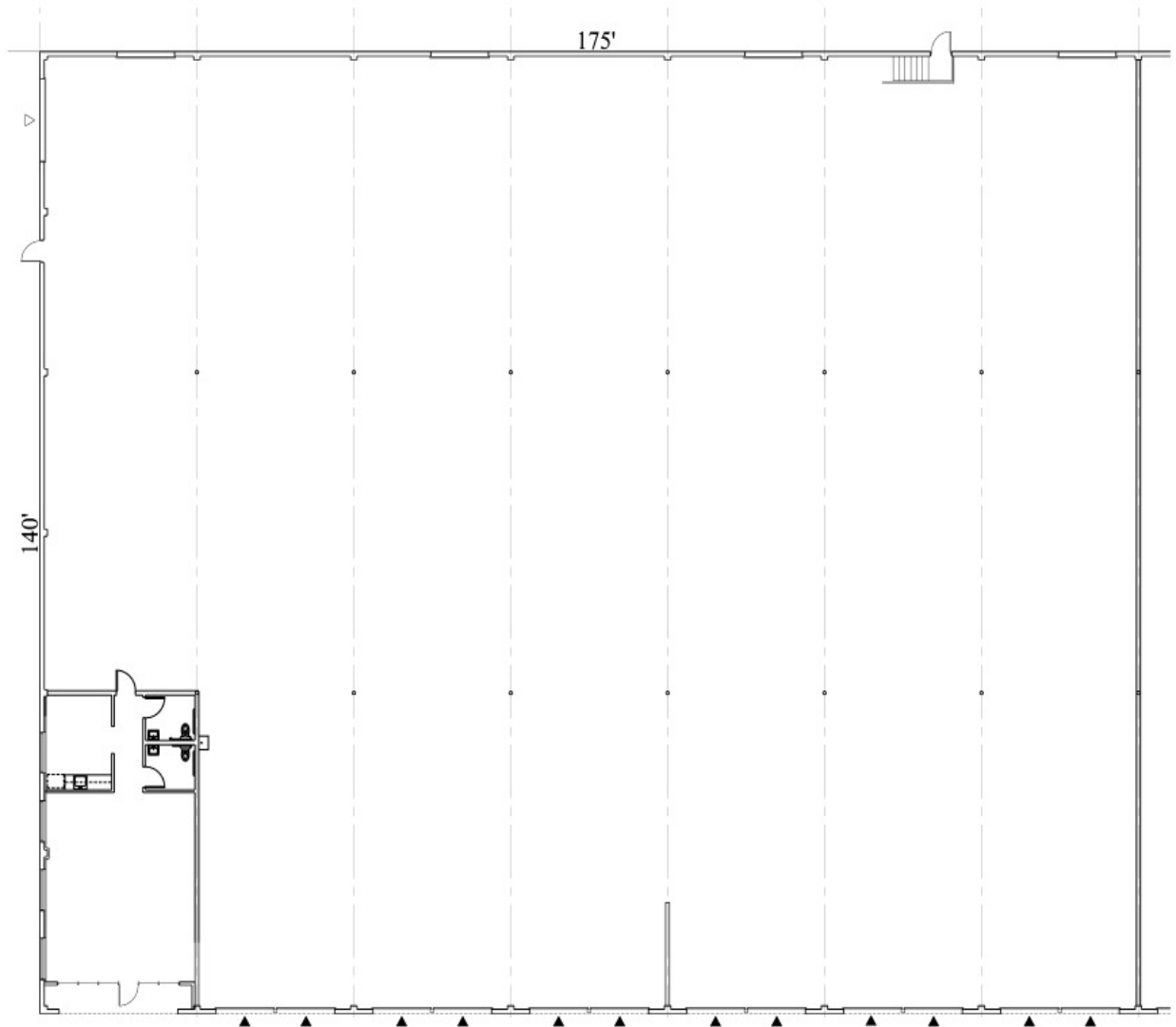
BUILDING KEY

1. 16120 - 16192 SW 72nd Avenue
2. 16200 - 16290 SW 72nd Avenue
3. 16300 - 16330 SW 72nd Avenue
4. 16332 - 16358 SW 72nd Avenue
5. 16416 - 16444 SW 72nd Avenue
6. 16460 - 16490 SW 72nd Avenue
7. 16500 - 16520 SW 72nd Avenue
8. 16364 - 16398 SW 72nd Avenue
9. 16550 - 16578 SW 72nd Avenue
10. 16600 - 16640 SW 72nd Avenue
11. 16580 - 16598 SW 72nd Avenue
12. 16650 SW 72nd Avenue
14. 16756 - 16798 SW 72nd Avenue
15. 15860 - 15870 SW 72nd Avenue
16. 16700 - 16748 SW 72nd Avenue
17. 15912 - 15954 SW 72nd Avenue
18. 16100 - 16112 SW 72nd Avenue

All addresses are
Portland OR 97224

OREGON BUSINESS PARK I

Building 2 • 16200 SW 72nd Avenue • Portland OR 97224



SUBJECT

BUILDING KEY PLAN
NOT TO SCALE



AVAILABLE
1,125 SF OFFICE
24,500 SF TOTAL

- △ GRADE ACCESS
- ▲ DOCK ACCESS



PACTRUST

Pacific Realty Associates, L.P.

15350 SW Sequoia Parkway, Suite 300, Portland OR 97224 • 503-624-6300 • www.pactrust.com

The square footage and rates quoted herein are subject to change. PacTrust can only guarantee square footage and rates with a signed lease agreement.