

OREGON BUSINESS PARK I

12,000 Sq Ft Warehouse/Distribution



LOCATION	Building 4 16350 SW 72nd Avenue Portland OR 97224
TOTAL SQ FT	12,000 SF
OFFICE SQ FT	1,337 SF
DOORS	5 Dock high, 1 drive-in
FEATURE	Near the I-5/Highway 217 interchange
CLEAR HEIGHT	20'
MONTHLY RATE	\$0.40/sqft - Shell \$0.75/sqft - Office NNN

LEASING CONTACT Sam Briggs
samb@pactrust.com
503-624-6300

Dave Hicks
daveh@pactrust.com
503-624-6300



N
OREGON BUSINESS PARK I
Portland, Oregon 97224

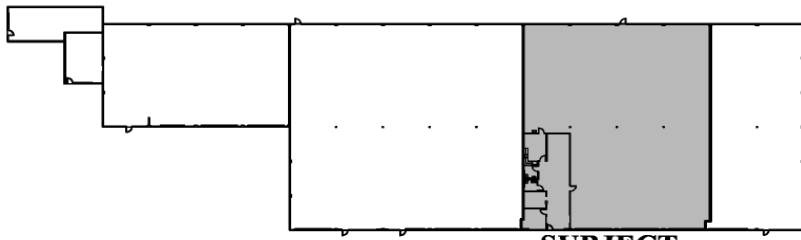
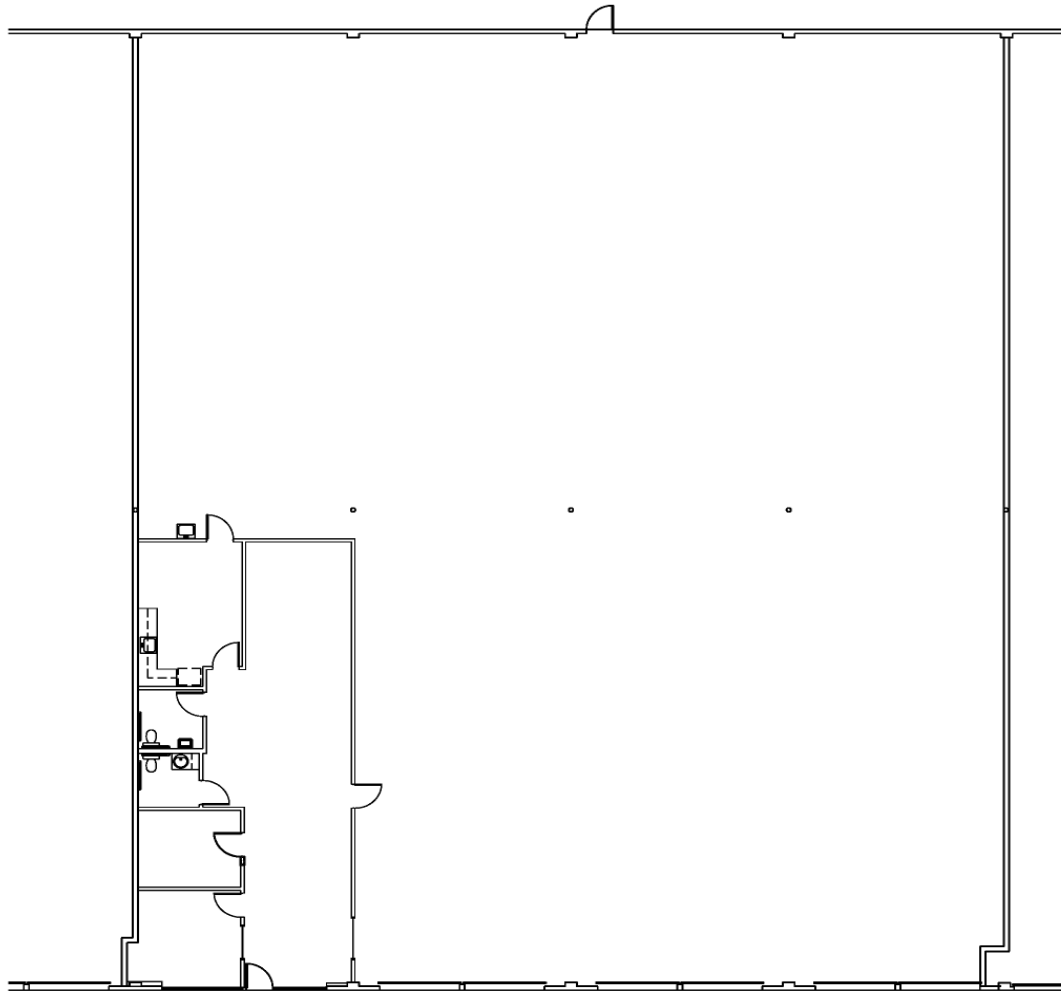
BUILDING KEY

1. 16120 - 16192 SW 72nd Avenue
2. 16200 - 16290 SW 72nd Avenue
3. 16300 - 16330 SW 72nd Avenue
4. 16332 - 16358 SW 72nd Avenue
5. 16416 - 16444 SW 72nd Avenue
6. 16460 - 16490 SW 72nd Avenue
7. 16500 - 16520 SW 72nd Avenue
8. 16364 - 16398 SW 72nd Avenue
9. 16550 - 16578 SW 72nd Avenue
10. 16600 - 16640 SW 72nd Avenue
11. 16580 - 16598 SW 72nd Avenue
12. 16650 SW 72nd Avenue
14. 16756 - 16798 SW 72nd Avenue
15. 15860 - 15870 SW 72nd Avenue
16. 16700 - 16748 SW 72nd Avenue
17. 15912 - 15954 SW 72nd Avenue
18. 16100 - 16112 SW 72nd Avenue

All addresses are
Portland OR 97224

OREGON BUSINESS PARK I

Building 4 • 16350 SW 72nd Avenue • Portland OR 97224



AVAILABLE
12,000 SF TOTAL
1,377 SF OFFICE



SUBJECT

BUILDING KEY PLAN
NOT TO SCALE



PACTRUST

Pacific Realty Associates, L.P.

15350 SW Sequoia Parkway, Suite 300, Portland OR 97224 • 503-624-6300 • www.pactrust.com

The square footage and rates quoted herein are subject to change. PacTrust can only guarantee square footage and rates with a signed lease agreement.