

# OREGON BUSINESS PARK I

## 10,000 Sq Ft Warehouse/Distribution



**LOCATION** Building 5  
16436 SW 72nd Avenue  
Portland OR 97224

**TOTAL SQ FT** 10,000 SF

**OFFICE SQ FT** 1,189 SF

**DOCK-HIGH DOORS** 3

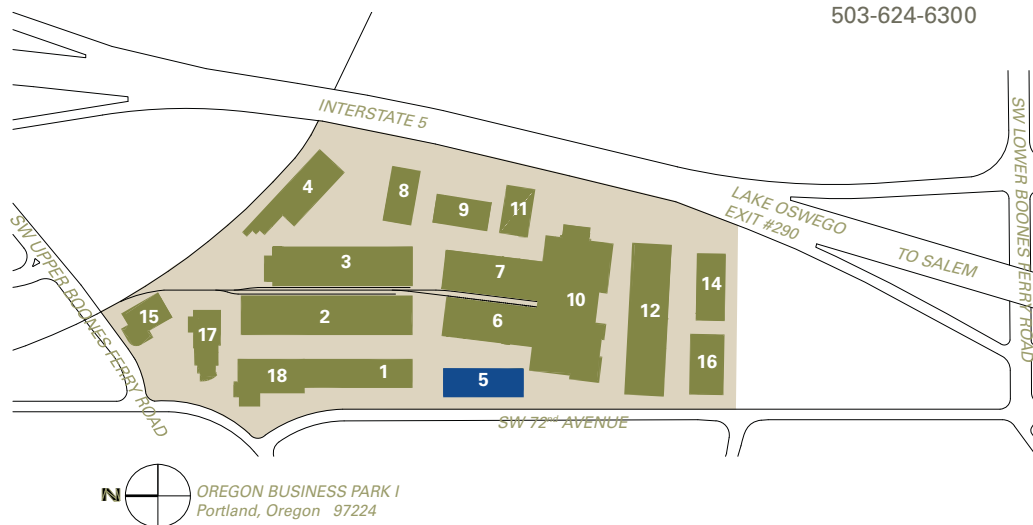
**DRIVE-IN DOORS** 2

**FEATURE** Near the I-5/Highway 217 interchange

**MONTHLY RATE** \$0.60/sqft - Shell  
\$0.85/sqft - Office  
NNN

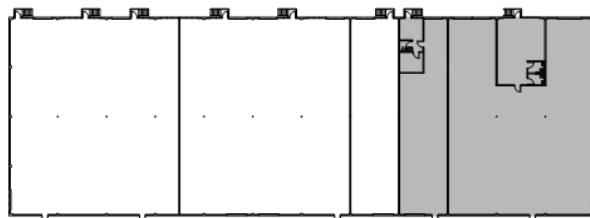
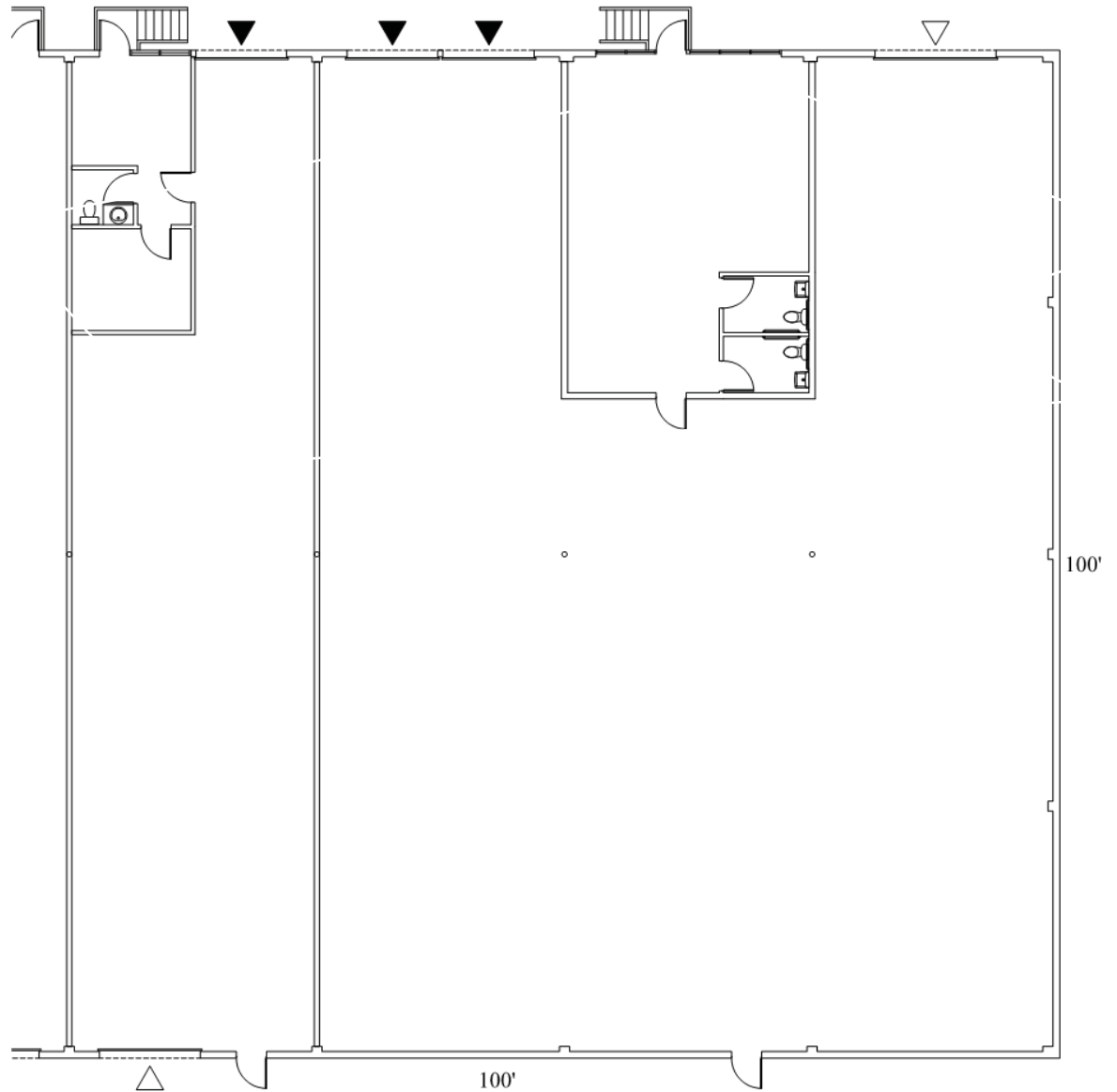
**LEASING CONTACT** Sam Briggs  
samb@pactrust.com  
503-624-6300

Dave Hicks  
daveh@pactrust.com  
503-624-6300



# OREGON BUSINESS PARK I

Building 5 • 16436 SW 72nd Avenue • Portland OR 97224



**BUILDING PLAN**

**SUBJECT**

## AVAILABLE

1,189 SF OFFICE  
10,000 SF TOTAL



WAREHOUSE CLEAR HT: 18'-0"

▽ GRADE ACCESS

▼ DOCK ACCESS

# PACTRUST

Pacific Realty Associates, L.P.

15350 SW Sequoia Parkway, Suite 300, Portland OR 97224 • 503-624-6300 • [www.pactrust.com](http://www.pactrust.com)

The square footage and rates quoted herein are subject to change. PacTrust can only guarantee square footage and rates with a signed lease agreement.