

# OREGON BUSINESS PARK I

## 31,500 Sq Ft Warehouse/Distribution



### LOCATION

Building 6  
16490 SW 72nd Avenue  
Portland OR 97224

### LEASING CONTACT

Sam Briggs  
samb@pactrust.com  
503-624-6300

### TOTAL SQ FT

31,500 SF

### OFFICE SQ FT

4,187 SF

### DOORS

6 Dock high, 2 drive-in

### CLEAR HEIGHT

24'

### ELECTRICAL

277/480 volt

### FEATURES

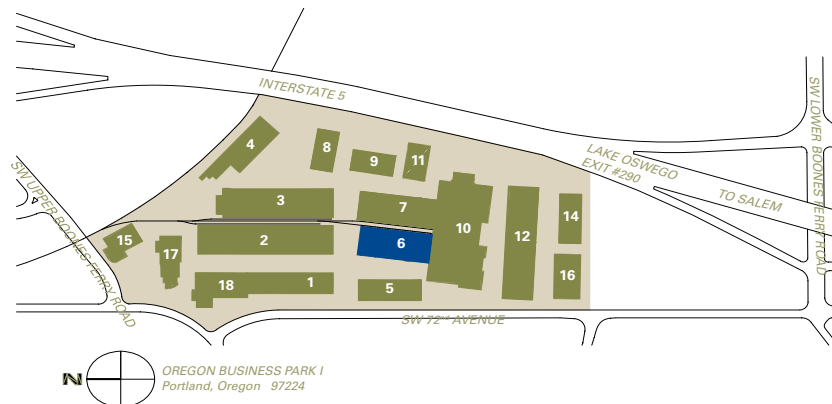
Near the I-5/Highway 217 interchange

Dave Hicks

daveh@pactrust.com  
503-624-6300

### MONTHLY RATE

\$0.40/sqft - Shell  
\$0.75/sqft - Office  
NNN



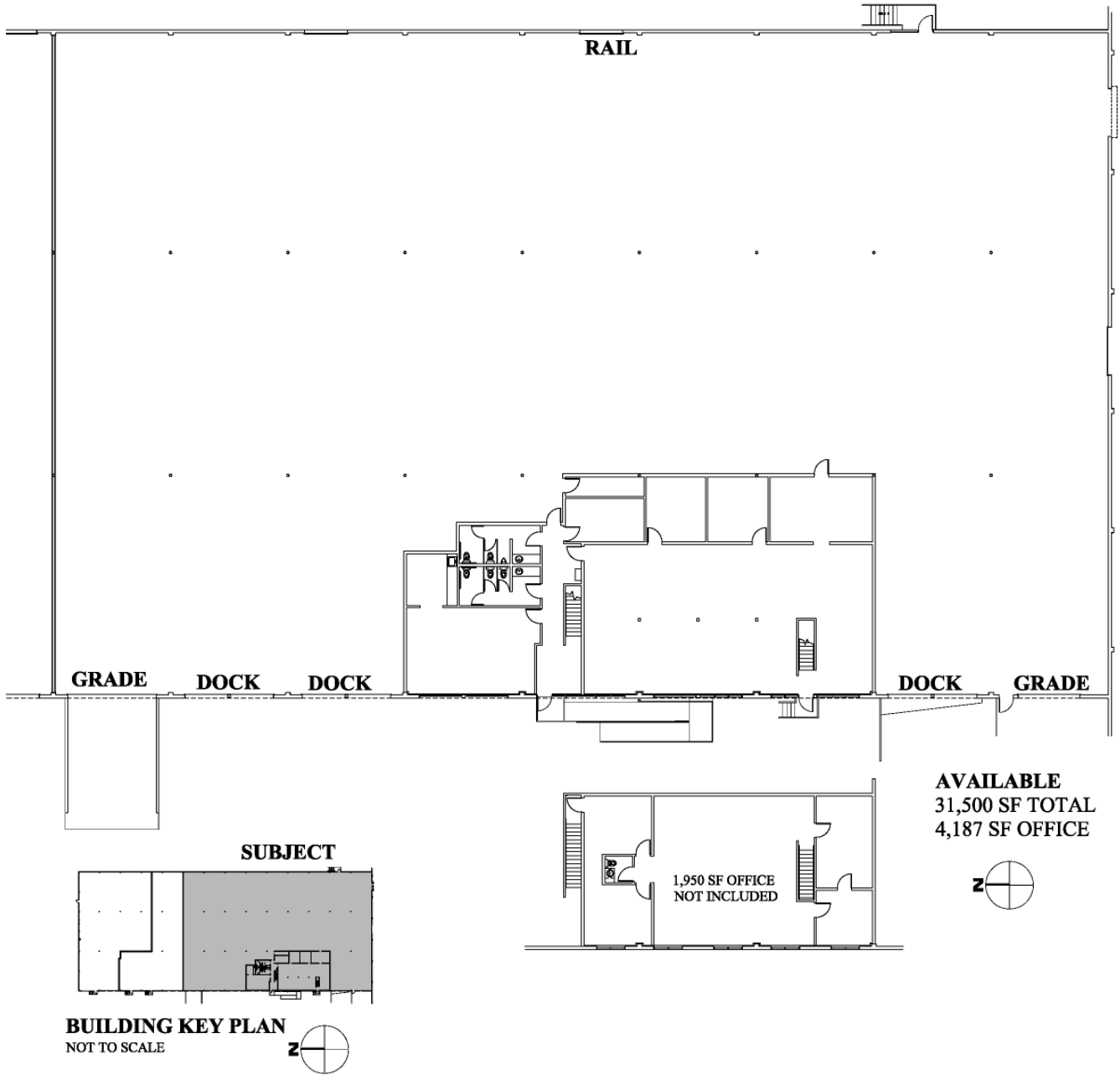
### BUILDING KEY

1. 16120 - 16192 SW 72nd Avenue
2. 16200 - 16290 SW 72nd Avenue
3. 16300 - 16330 SW 72nd Avenue
4. 16332 - 16358 SW 72nd Avenue
5. 16416 - 16444 SW 72nd Avenue
6. 16460 - 16490 SW 72nd Avenue
7. 16500 - 16520 SW 72nd Avenue
8. 16364 - 16398 SW 72nd Avenue
9. 16550 - 16578 SW 72nd Avenue
10. 16600 - 16640 SW 72nd Avenue
11. 16580 - 16598 SW 72nd Avenue
12. 16650 SW 72nd Avenue
14. 16756 - 16798 SW 72nd Avenue
15. 15860 - 15870 SW 72nd Avenue
16. 16700 - 16748 SW 72nd Avenue
17. 15912 - 15954 SW 72nd Avenue
18. 16100 - 16112 SW 72nd Avenue

All addresses are  
Portland OR 97224

# OREGON BUSINESS PARK I

Building 6 • 16490 SW 72nd Avenue • Portland OR 97224



## PACTRUST

Pacific Realty Associates, L.P.

15350 SW Sequoia Parkway, Suite 300, Portland OR 97224 • 503-624-6300 • [www.pactrust.com](http://www.pactrust.com)

The square footage and rates quoted herein are subject to change. PacTrust can only guarantee square footage and rates with a signed lease agreement.