

# OREGON BUSINESS PARK III

## 3,505 Sq Ft Flex Space



**LOCATION**  
 Building B  
 15883 SW 72nd Avenue  
 Portland OR 97224

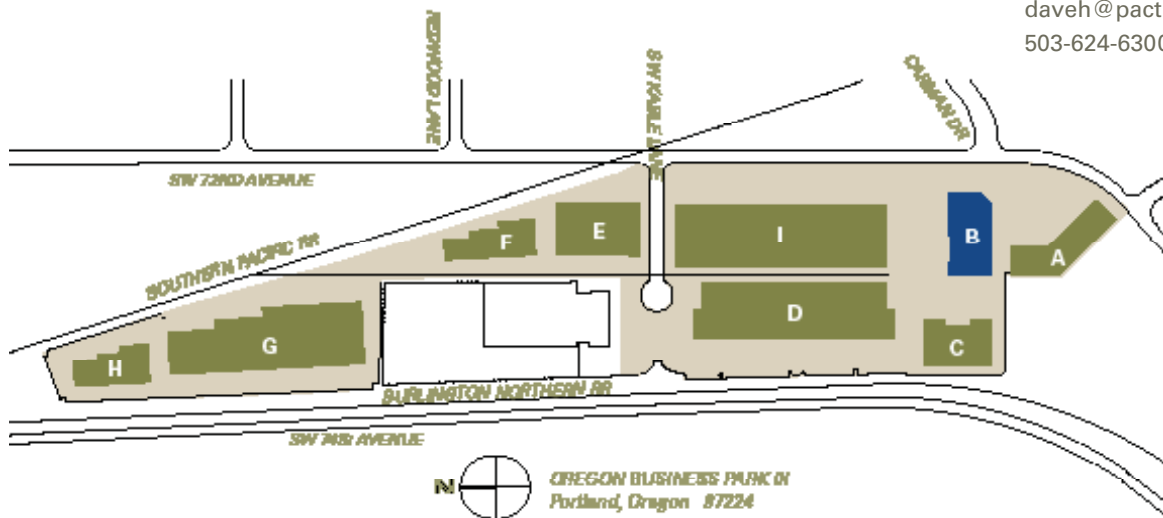
**MONTHLY RATE**  
 \$0.60/sqft - Shell  
 \$0.85/sqft - Office  
 NNN

**TOTAL SQ FT** 3,505 SF  
**OFFICE SQ FT** 991 SF

**LEASING CONTACT**  
 Sam Briggs  
 samb@pactrust.com  
 503-624-6300

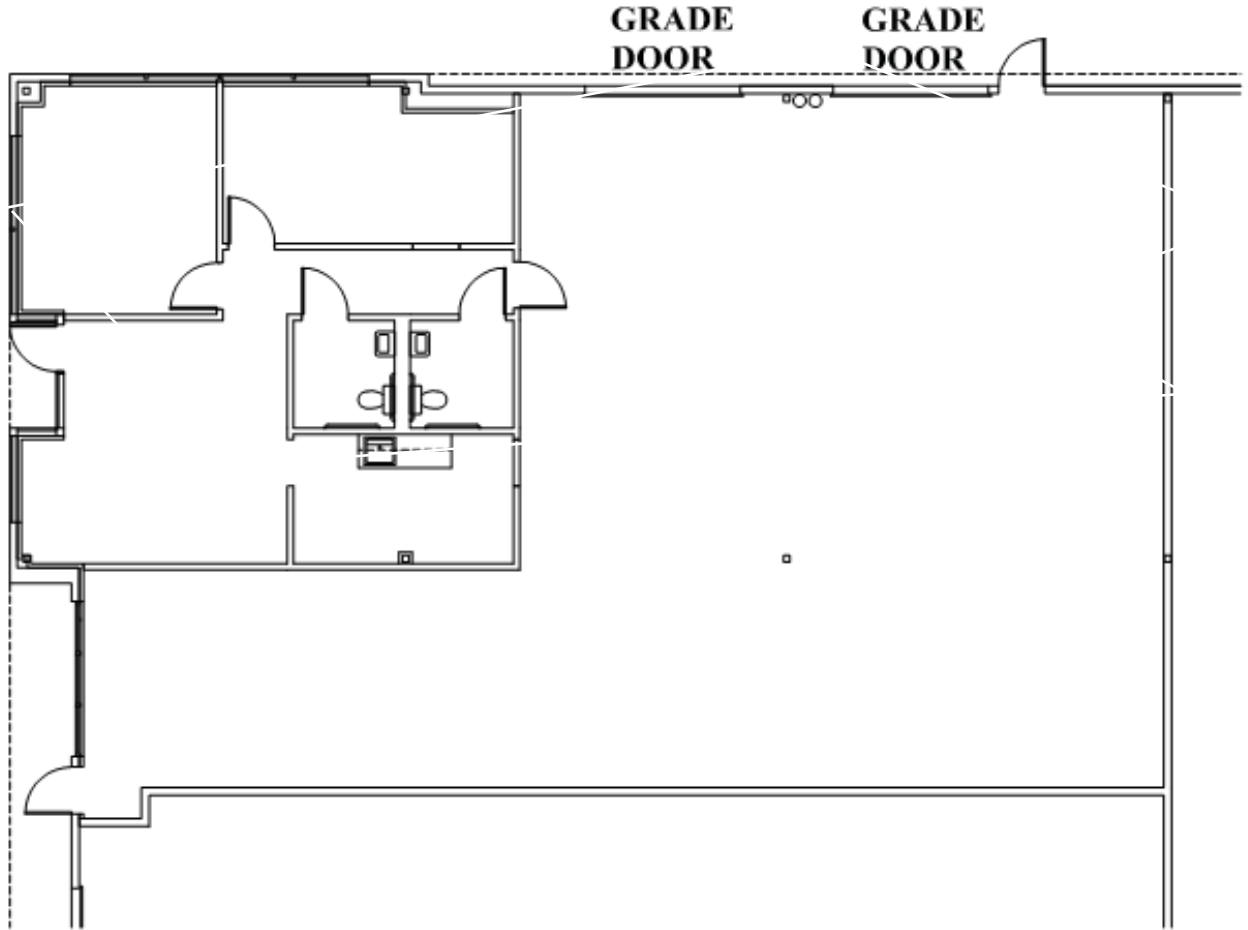
**DRIVE-IN DOORS** 2  
**FEATURES** High visibility location

Dave Hicks  
 daveh@pactrust.com  
 503-624-6300



# OREGON BUSINESS PARK III

Building B • 15883 SW 72nd Avenue • Portland OR 97224



**SUBJECT**



**BUILDING KEY PLAN**

NOT TO SCALE



**AVAILABLE**

991 SF OFFICE  
3,505 SF TOTAL



**PACTRUST**

Pacific Realty Associates, L.P.

15350 SW Sequoia Parkway, Suite 300, Portland OR 97224 • 503-624-6300 • [www.pactrust.com](http://www.pactrust.com)

The square footage and rates quoted herein are subject to change. PacTrust can only guarantee square footage and rates with a signed lease agreement.