

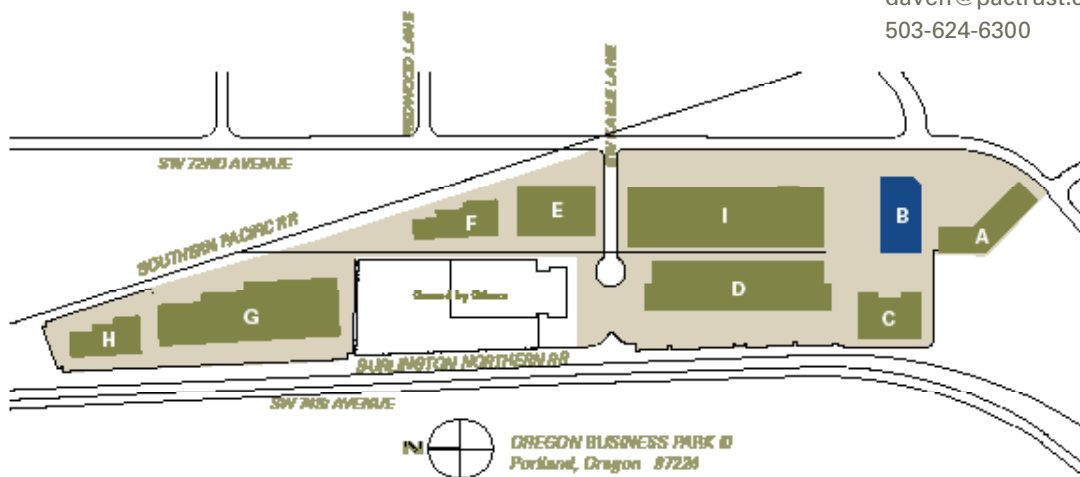
# OREGON BUSINESS PARK III

## 5,732 Sq Ft Flex Space



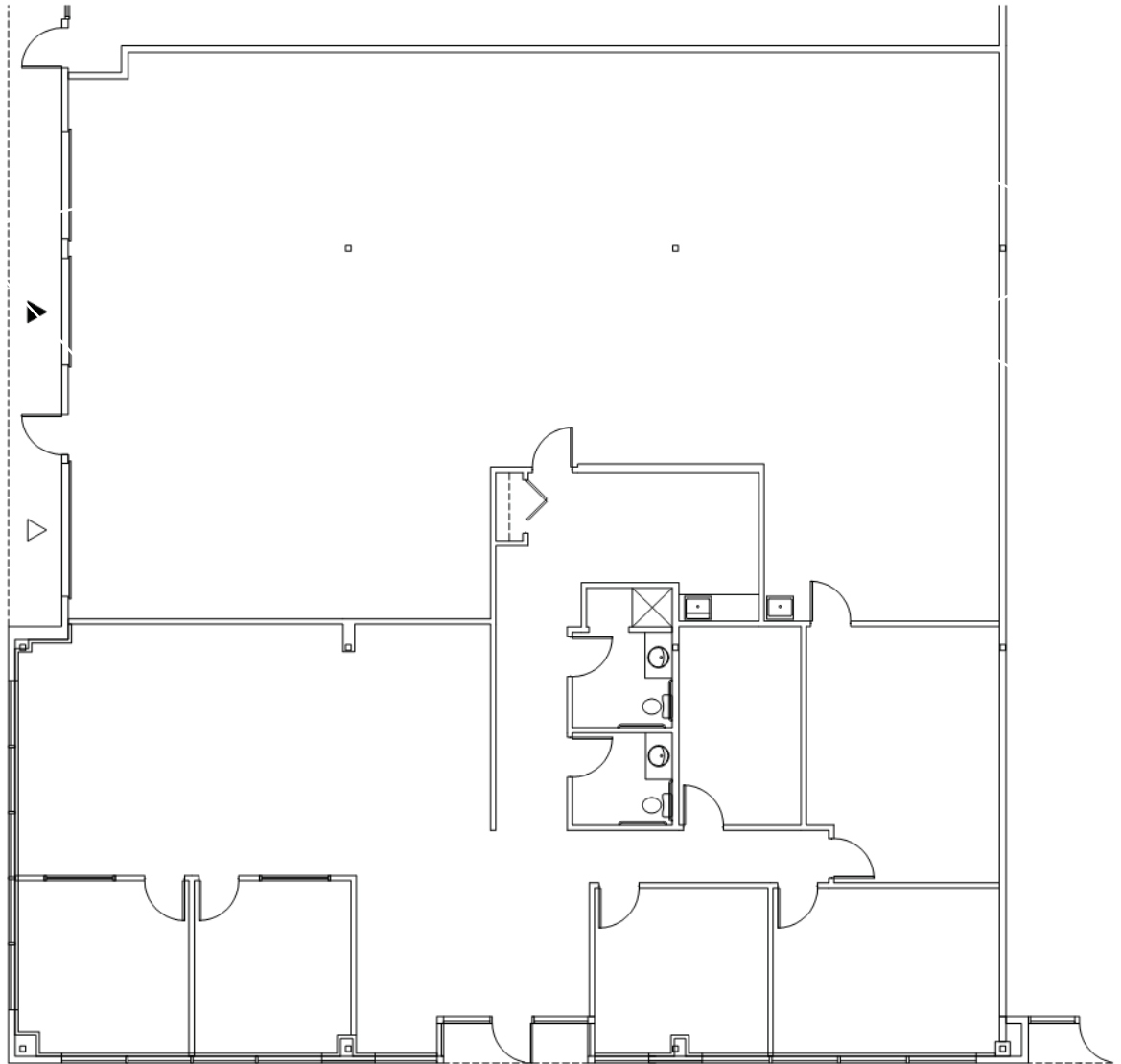
<b>LOCATION</b>	Building B 15887 SW 72nd Avenue Portland OR 97224	<b>MONTHLY RATE</b>	\$0.60/sqft - Shell \$0.90/sqft - Office NNN
<b>TOTAL SQ FT</b>	5,732 SF		
<b>OFFICE SQ FT</b>	2,636 SF		
<b>DOCK HIGH DOORS</b>	2	<b>LEASING CONTACT</b>	Sam Briggs samb@pactrust.com 503-624-6300
<b>DRIVE-IN DOORS</b>	1		
<b>FEATURES</b>	High visibility location		

Dave Hicks  
daveh@pactrust.com  
503-624-6300



# OREGON BUSINESS PARK III

Building B • 15887 SW 72nd Avenue • Portland OR 97224



**SUBJECT  
BUILDING PLAN**

## AVAILABLE

5,732 SF TOTAL  
2,636 SF OFFICE



▽ GRADE ACCESS

▼ DOCK ACCESS

# PACTRUST

Pacific Realty Associates, L.P.

15350 SW Sequoia Parkway, Suite 300, Portland OR 97224 • 503-624-6300 • [www.pactrust.com](http://www.pactrust.com)

The square footage and rates quoted herein are subject to change. PacTrust can only guarantee square footage and rates with a signed lease agreement.