

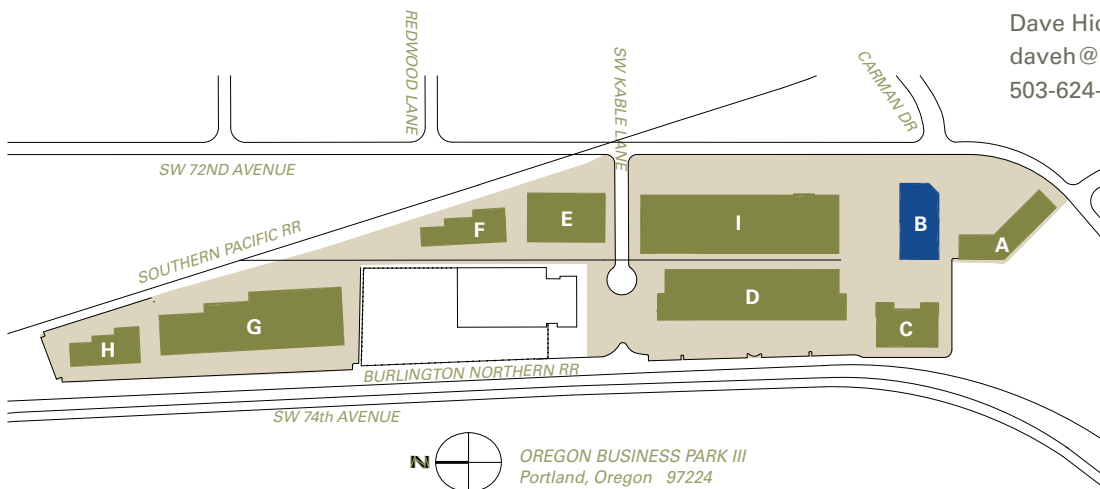
OREGON BUSINESS PARK III

5,956 Sq Ft Flex



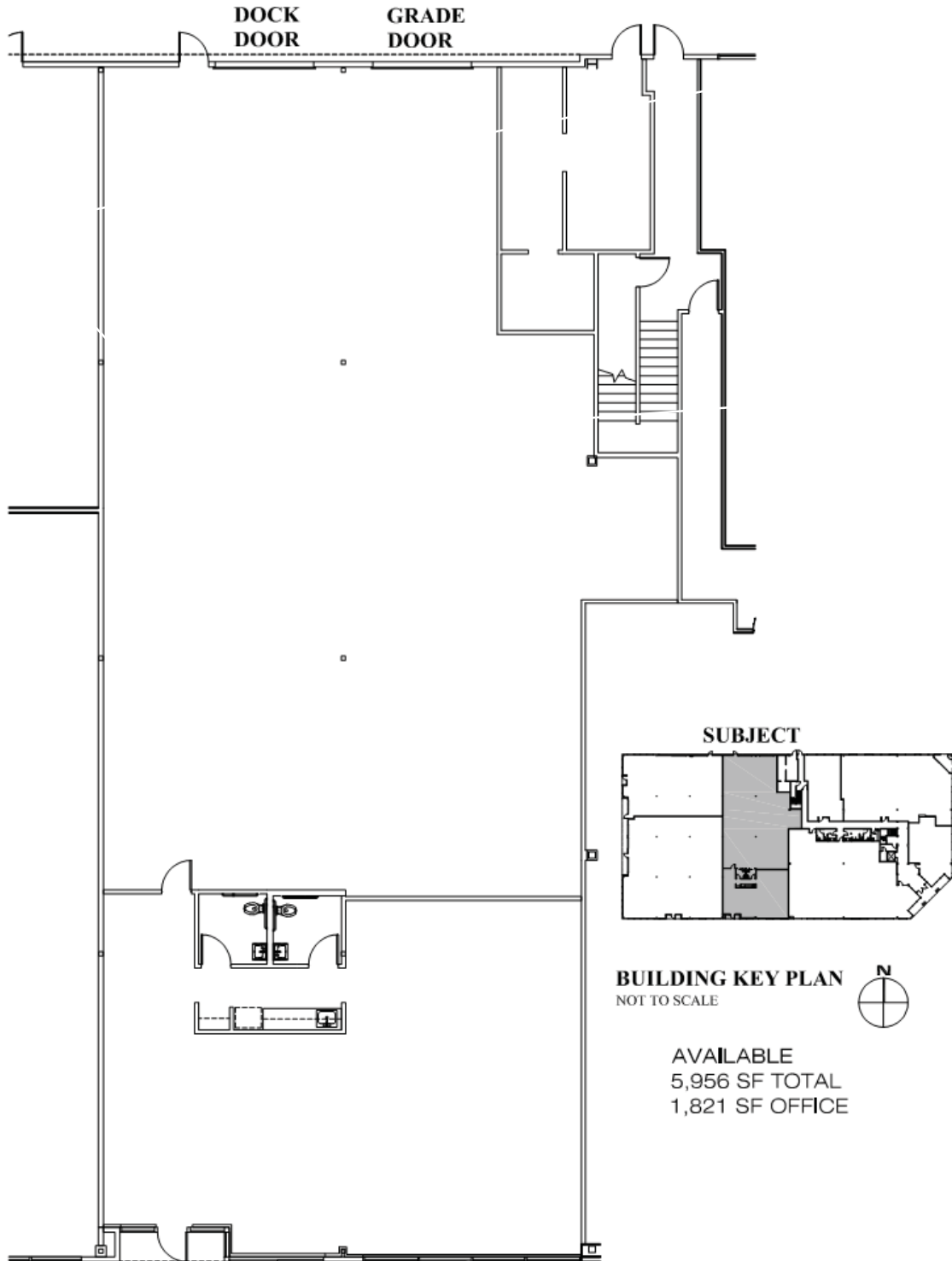
LOCATION	Building B 15889 SW 72nd Avenue Portland OR 97224	MONTHLY RATE	\$0.60/sqft - Shell \$0.85/sqft - Office NNN
TOTAL SQ FT	5,956 SF	DATE AVAILABLE	AUGUST 2017
OFFICE SQ FT	1,821 SF	LEASING CONTACT	Sam Briggs samb@pactrust.com 503-624-6300
GRADE-LEVEL DOORS	0		
GRADE-LEVEL DOORS	2		
FEATURE	Easy access to I-5		

Dave Hicks
daveh@pactrust.com
503-624-6300



OREGON BUSINESS PARK III

Building B • 15889 SW 72nd Avenue • Portland OR 97224



PACTRUST

Pacific Realty Associates, L.P.

15350 SW Sequoia Parkway, Suite 300, Portland OR 97224 • 503-624-6300 • www.pactrust.com

The square footage and rates quoted herein are subject to change. PACTRUST can only guarantee square footage and rates with a signed lease agreement.