

# ORENCO STATION TOWN CENTER

## 1,417 Sq Ft Office



### LOCATION

Building 3  
6125 NE Cornell Road  
Suite 300  
Hillsboro OR 97124

### ANNUAL RATE

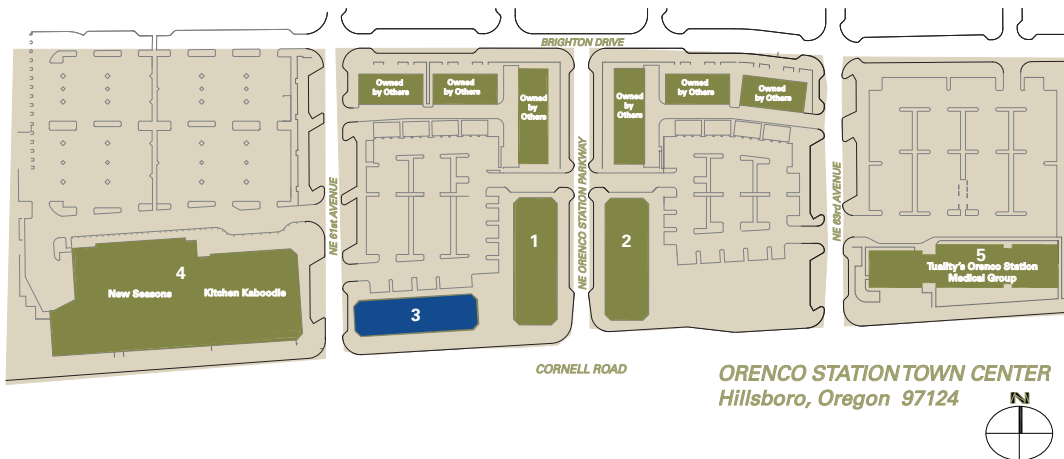
\$28.00/sqft  
Full service

### TOTAL SQ FT FEATURES

1,417 SF  
Third floor suite  
Upscale neighborhood retail  
& office development  
On TriMet's MAX Light Rail system

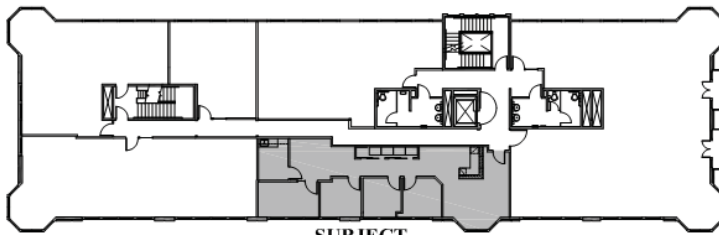
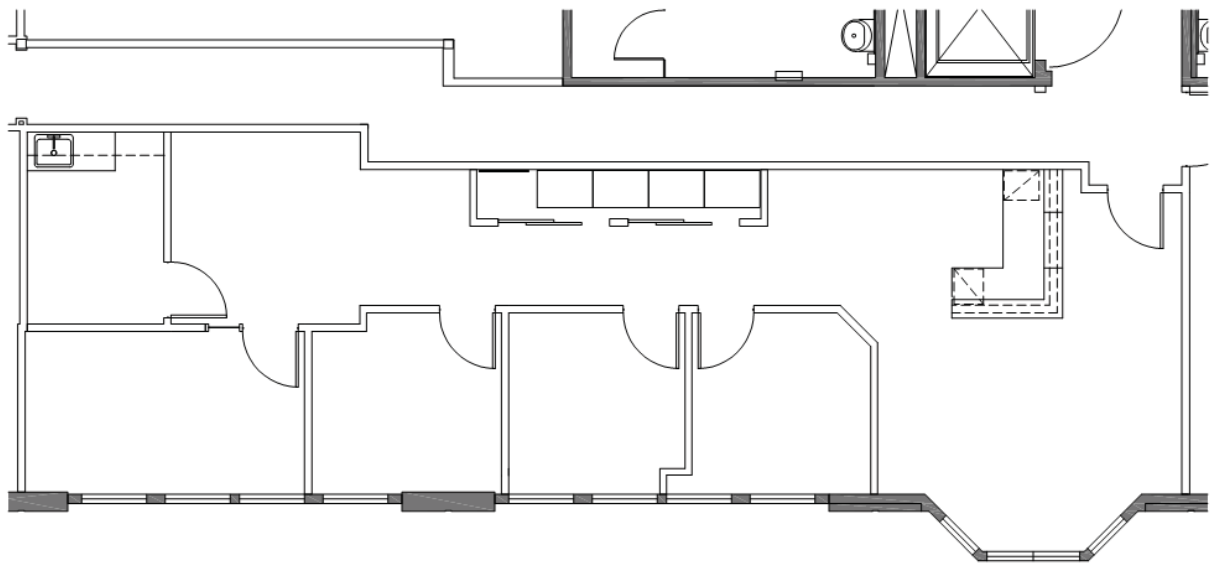
### LEASING CONTACT

Sam Briggs  
samb@pactrust.com  
503-624-6300



# ORENCO STATION TOWN CENTER

Building 3 • 6125 NE Cornell Road, Suite 300 • Hillsboro OR 97124



SUBJECT

**BUILDING KEY PLAN**  
NOT TO SCALE

**AVAILABLE**  
1,417 SF TOTAL



## PACTRUST

Pacific Realty Associates, L.P.

15350 SW Sequoia Parkway, Suite 300, Portland OR 97224 • 503-624-6300 • [www.pactrust.com](http://www.pactrust.com)

The square footage and rates quoted herein are subject to change. PacTrust can only guarantee square footage and rates with a signed lease agreement.