

ORENCO STATION TOWN CENTER

1,477 Sq Ft Office



LOCATION

Building 3
6125 NE Cornell Road
Suite 360
Hillsboro OR 97124

ANNUAL RATE

\$26.00/sqft
Full service

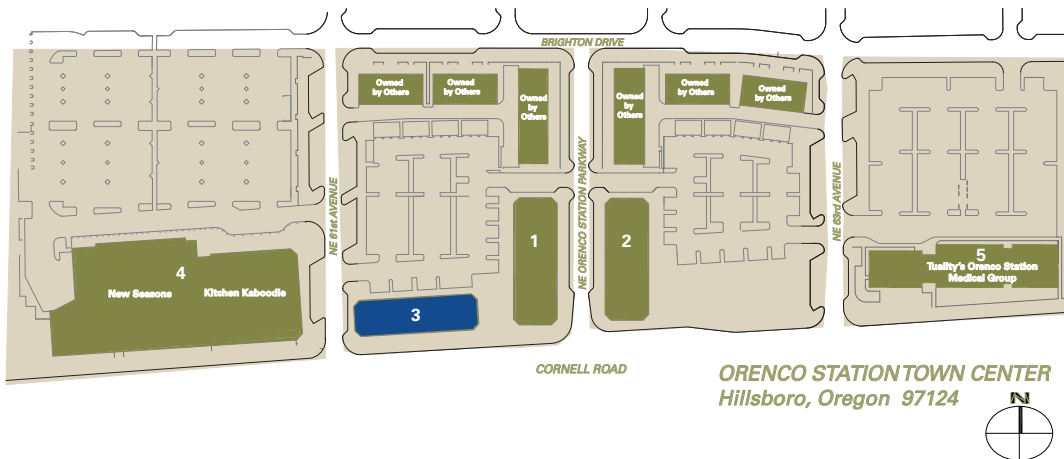
TOTAL SQ FT FEATURES

1,477 SF
Third floor suite
Upscale neighborhood retail
& office development
On TriMet's MAX Light Rail system

LEASING CONTACT

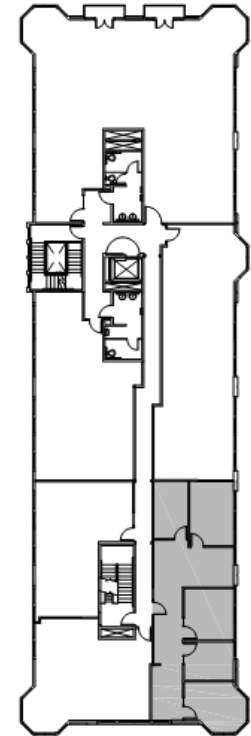
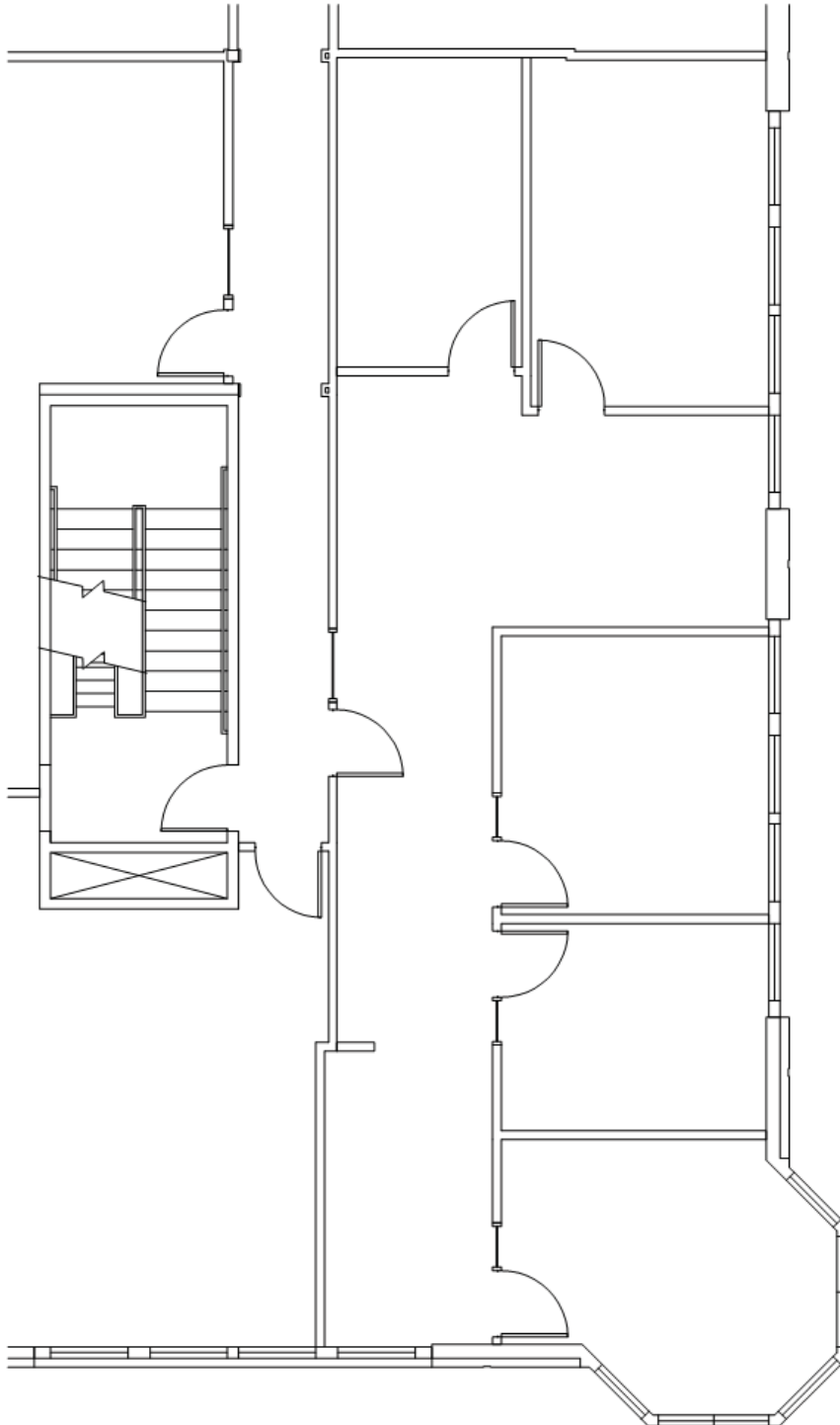
Sam Briggs
samb@pactrust.com
503-624-6300

Dave Hicks
daveh@pactrust.com
503-624-6300



ORENCO STATION TOWN CENTER

Building 3 • 6125 NE Cornell Road, Suite 360 • Hillsboro OR 97124



SUBJECT
BUILDING PLAN



AVAILABLE
1,477 SF TOTAL



PACTRUST

Pacific Realty Associates, L.P.

15350 SW Sequoia Parkway, Suite 300, Portland OR 97224 • 503-624-6300 • www.pactrust.com

The square footage and rates quoted herein are subject to change. PacTrust can only guarantee square footage and rates with a signed lease agreement.