

ORENCO STATION TOWN CENTER

781 Sq Ft Office



LOCATION Building 3
6125 NE Cornell Road, Suite 380
Hillsboro OR 97124

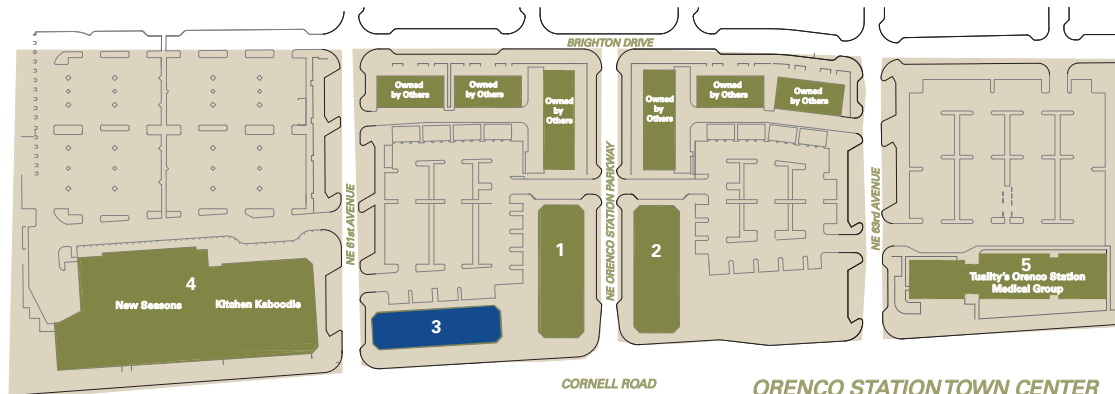
TOTAL SQ FT 781 SF

FEATURES Third floor suite
Upscale neighborhood retail
& office development
On TriMet's MAX Light Rail system

ANNUAL RATE \$26.00/sqft
Full service

LEASING CONTACT Sam Briggs
samb@pactrust.com
503-624-6300

Dave Hicks
daveh@pactrust.com
503-624-6300

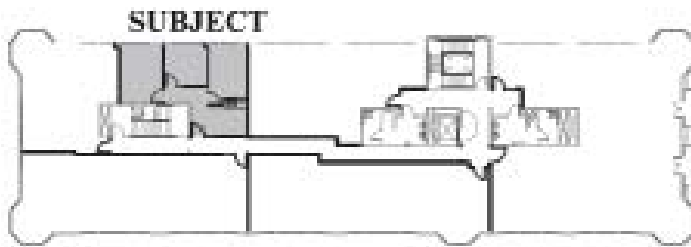
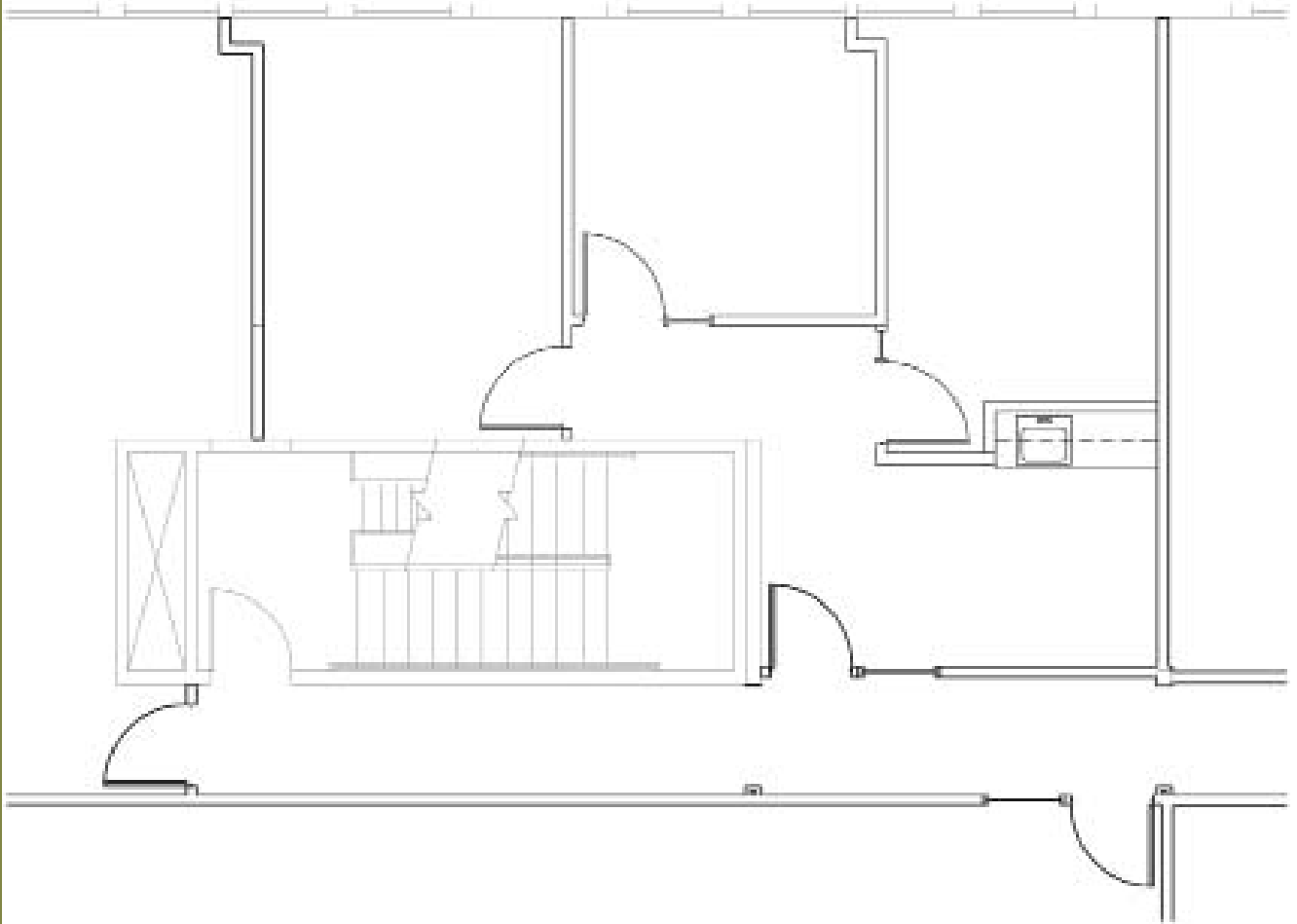


ORENCO STATION TOWN CENTER
Hillsboro, Oregon 97124



ORENCO STATION TOWN CENTER

Building 3 • 6125 NE Cornell Road, Suite 380 • Hillsboro OR 97124



AVAILABLE
781 SF TOTAL



BUILDING KEY PLAN
NOT TO SCALE



PACTRUST

Pacific Realty Associates, L.P.

15350 SW Sequoia Parkway, Suite 300, Portland OR 97224 • 503-624-6300 • www.pactrust.com

The square footage and rates quoted herein are subject to change. PacTrust can only guarantee square footage and rates with a signed lease agreement.