

# ORENCO STATION TOWN CENTER

## 2,217 Sq Ft Office



**LOCATION** Building 3  
6125 NE Cornell Road, Suite 390  
Hillsboro OR 97124

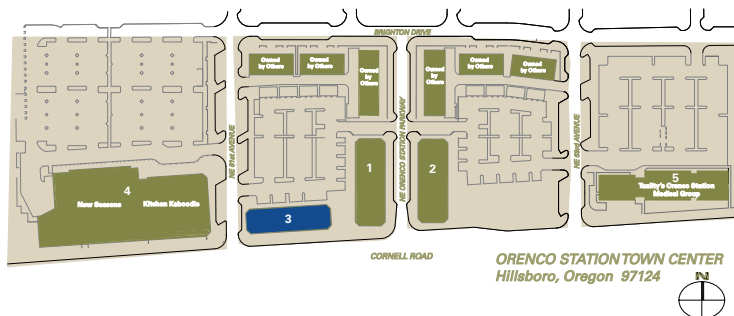
**TOTAL SQ FT** 2,217 SF

**FEATURES** Third floor suite  
Upscale neighborhood retail  
& office development  
On TriMet's MAX Light Rail system

**ANNUAL RATE** \$22.00/sqft  
Full service

**LEASING CONTACT** Sam Briggs  
samb@pactrust.com  
503-624-6300

Dave Hicks  
daveh@pactrust.com  
503-624-6300



### BUILDING KEY

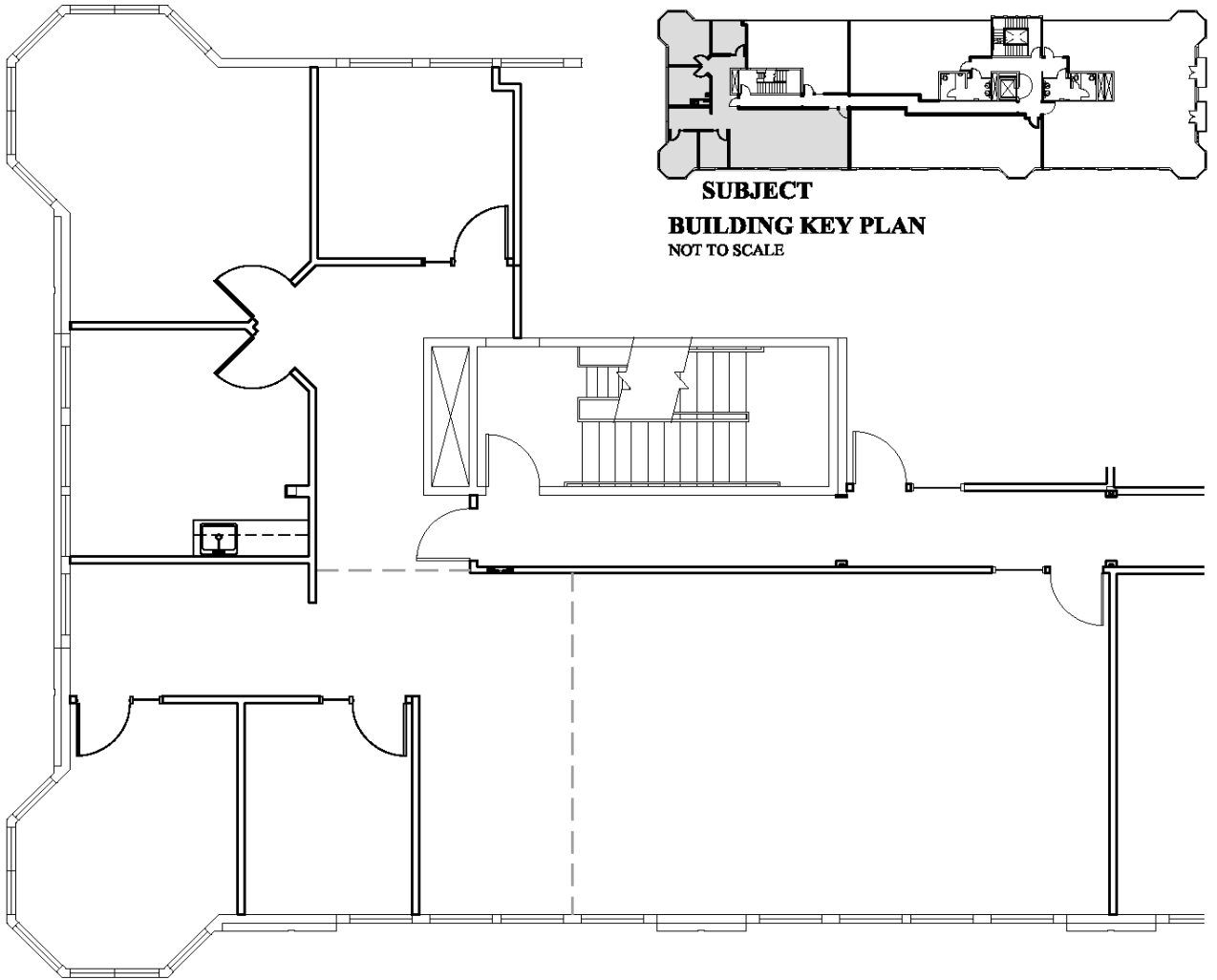
1. 1323 - 1341 NE Orenco Station Parkway
2. 1320 - 1322 NE Orenco Station Parkway
3. 6111 - 6125 NE Cornell Road
4. 1415 - 1453 NE 61<sup>ST</sup> Avenue
5. 6335 NE Cornell Road

All addresses are Hillsboro, OR 97124

# ORENCO STATION TOWN CENTER

Building 3 • 6125 NE Cornell Road, Suite 390 • Hillsboro OR 97124

**AVAILABLE**  
Suite #390  
814 SF TOTAL



**SUBJECT**  
**BUILDING KEY PLAN**  
NOT TO SCALE

**AVAILABLE**  
Suite #370  
715 SF TOTAL

**AVAILABLE**  
Suite#360  
688 SF TOTAL

**PACTRUST**

Pacific Realty Associates, L.P.

15350 SW Sequoia Parkway, Suite 300, Portland OR 97224 • 503-624-6300 • [www.pactrust.com](http://www.pactrust.com)

The square footage and rates quoted herein are subject to change. PacTrust can only guarantee square footage and rates with a signed lease agreement.