

PACIFIC PARKWAY CENTER

3,196 Sq Ft Office

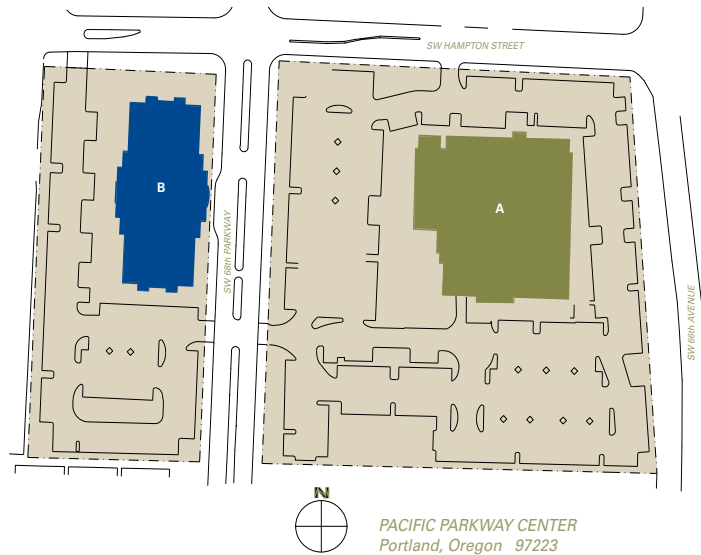


LOCATION Building B
Suite 100
12909 SW 68th Parkway
Tigard OR 97223

TOTAL SQ FT 3,196

FEATURES Great access to I-5

ANNUAL RATE \$22.00/sqft
Full Service



LEASING CONTACT Sam Briggs
samb@pactrust.com
503-624-6300

Dave Hicks
daveh@pactrust.com
503-624-6300

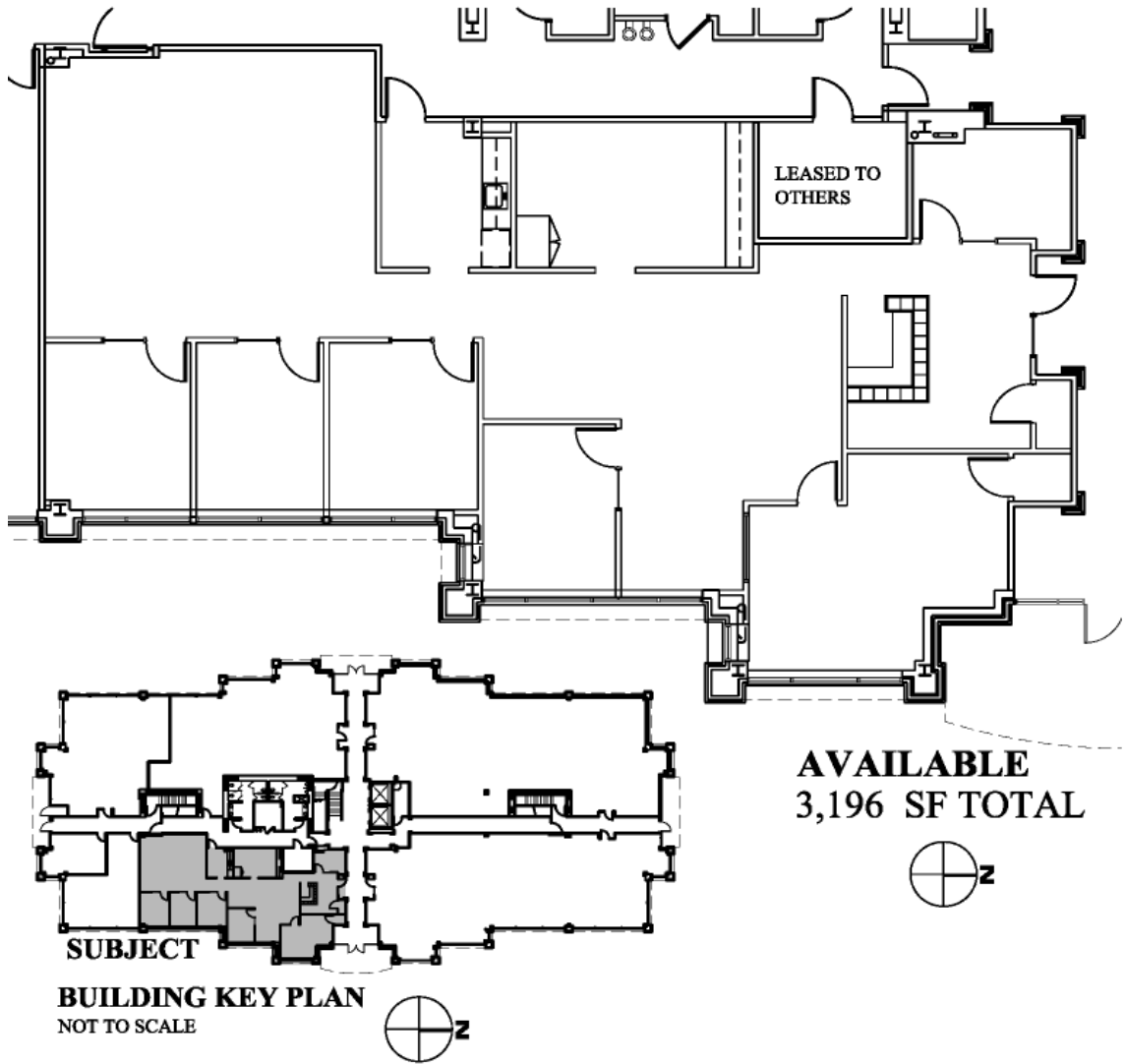
BUILDING KEY

- A. 6600 SW Hampton Street
- B. 12909 SW 68th Parkway

Addresses are
Tigard OR 97223

PACIFIC PARKWAY CENTER

Building B • 12909 SW 68th Parkway, Suite 100 • Tigard OR 97223



PACTRUST

Pacific Realty Associates, L.P.

15350 SW Sequoia Parkway, Suite 300, Portland OR 97224 • 503-624-6300 • www.pactrust.com

The square footage and rates quoted herein are subject to change. PacTrust can only guarantee square footage and rates with a signed lease agreement.