

# PACIFIC PARKWAY CENTER

1,327 Sq Ft Office



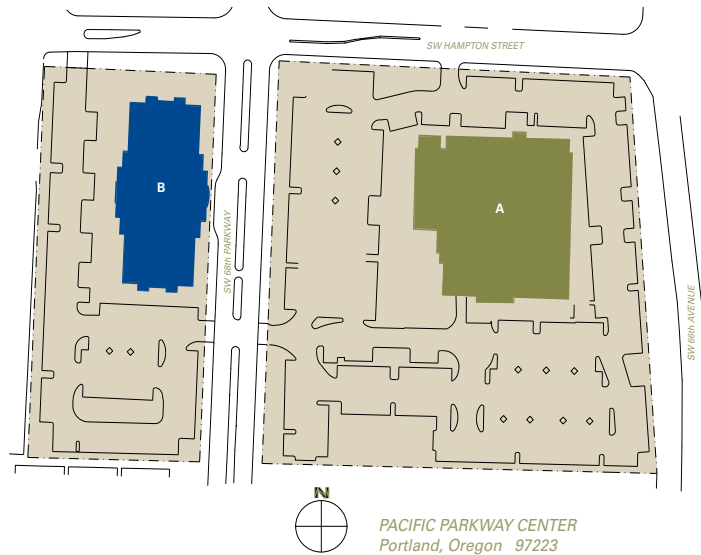
**LOCATION** Building B  
Suite 270  
12909 SW 68<sup>th</sup> Parkway  
Tigard OR 97223

**TOTAL SQ FT** 1,327

**FEATURES** Great access to I-5

**PARKING RATIO** 4/1,000

**ANNUAL RATE** \$22.00/sqft  
Full Service



**LEASING CONTACT** Sam Briggs  
samb@pactrust.com  
503-624-6300

Dave Hicks  
daveh@pactrust.com  
503-624-6300

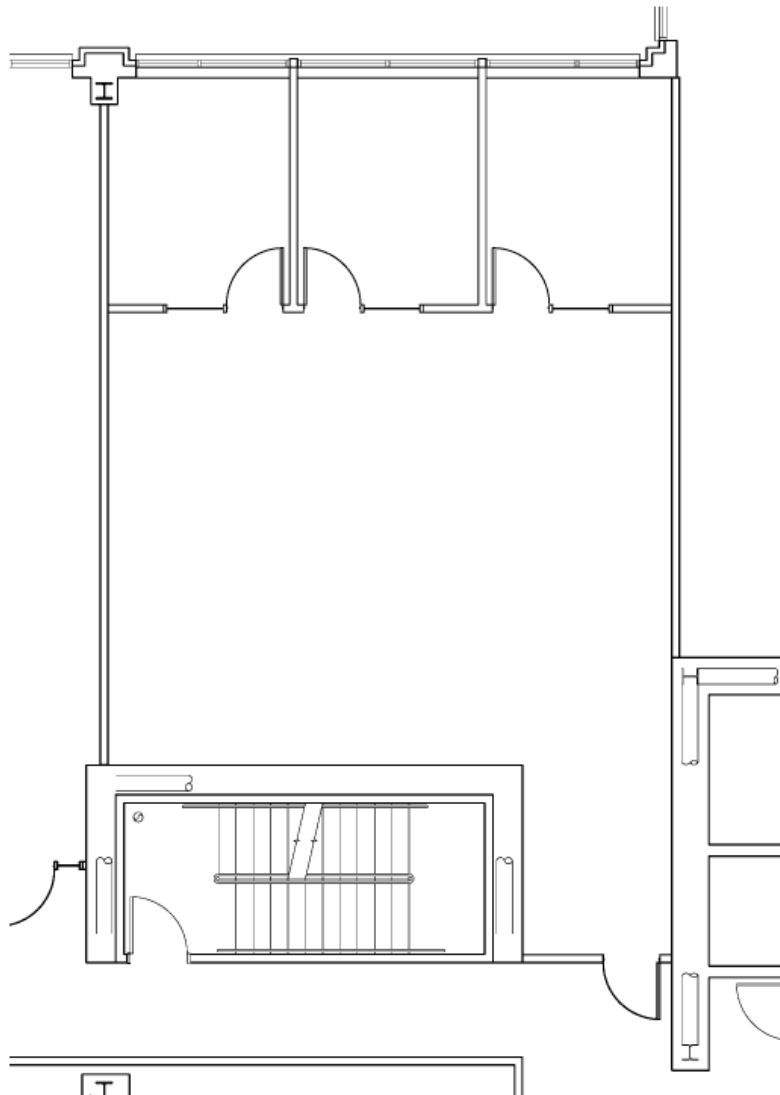
## BUILDING KEY

- A. 6600 SW Hampton Street
- B. 12909 SW 68th Parkway

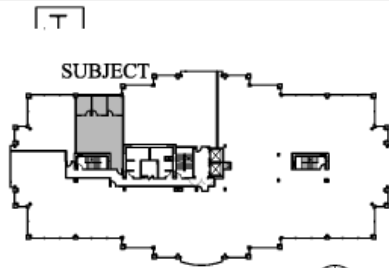
Addresses are  
Tigard OR 97223

# PACIFIC PARKWAY CENTER

Building B • 12909 SW 68<sup>th</sup> Parkway, Suites 270 • Tigard OR 97223



**AVAILABLE**  
1,327 SF TOTAL



**PLAN KEY**  
NOT TO SCALE

## PACTRUST

Pacific Realty Associates, L.P.

15350 SW Sequoia Parkway, Suite 300, Portland OR 97224 • 503-624-6300 • [www.pactrust.com](http://www.pactrust.com)

The square footage and rates quoted herein are subject to change. PacTrust can only guarantee square footage and rates with a signed lease agreement.