

PACIFIC PARKWAY CENTER

1,694 Sq Ft Office



LOCATION Building B
Suite 430
12909 SW 68th Parkway
Tigard OR 97223

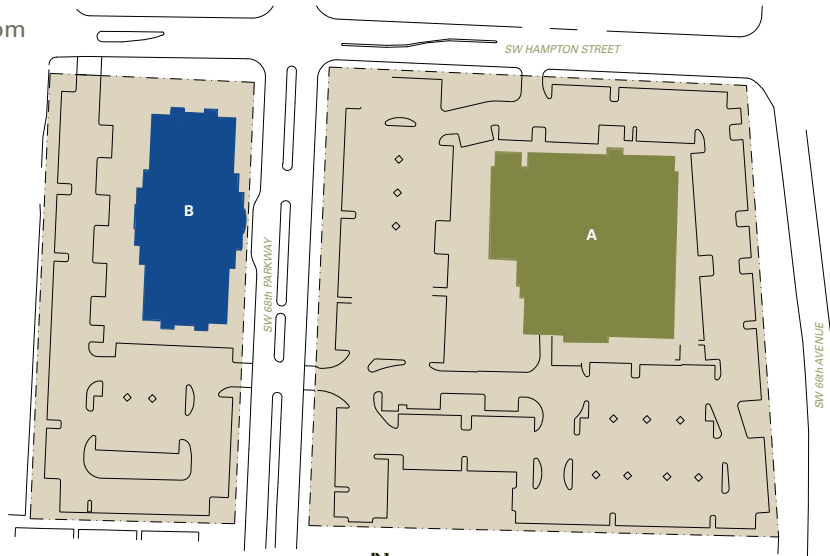
LEASING CONTACT Sam Briggs
samb@pactrust.com
503-624-6300

TOTAL SQ FT 1,694

Dave Hicks
daveh@pactrust.com
503-624-6300

FEATURES Great access to I-5
Building conference room
4/1,000 SF parking ratio

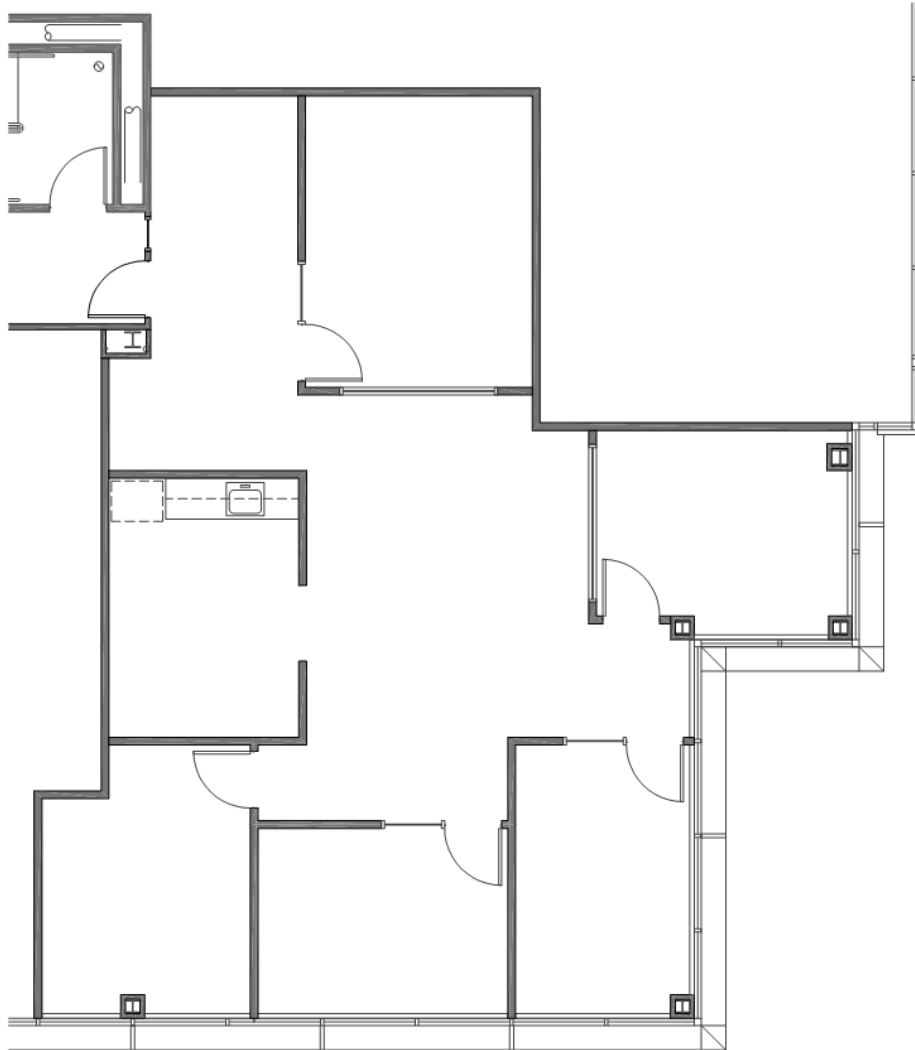
ANNUAL RATE \$27.00/sqft
Full Service



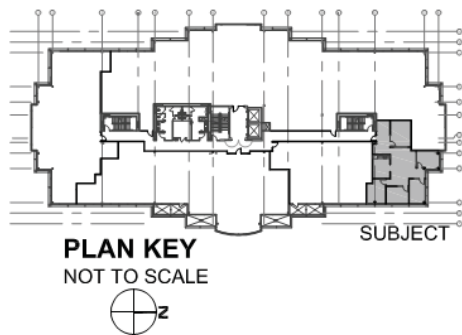
PACIFIC PARKWAY CENTER
Portland, Oregon 97223

PACIFIC PARKWAY CENTER

Building B • 12909 SW 68th Parkway, Suite 430 • Tigard OR 97223



AVAILABLE
1,694 SF RENTABLE



PLAN KEY
NOT TO SCALE

SUBJECT

PACTRUST

Pacific Realty Associates, L.P.

15350 SW Sequoia Parkway, Suite 300, Portland OR 97224 • 503-624-6300 • www.pactrust.com

The square footage and rates quoted herein are subject to change. PacTrust can only guarantee square footage and rates with a signed lease agreement.