

PACIFIC PARKWAY CENTER

2,873 Sq Ft Office



LOCATION Building B
Suite 250
12909 SW 68th Parkway
Tigard OR 97223

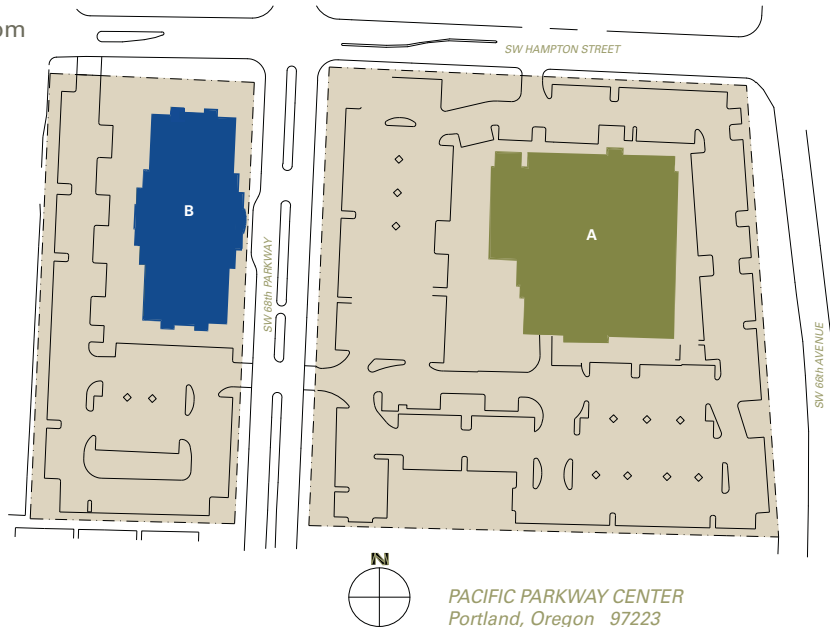
LEASING CONTACT Sam Briggs
samb@pactrust.com
503-624-6300

TOTAL SQ FT 2,873

Dave Hicks
daveh@pactrust.com
503-624-6300

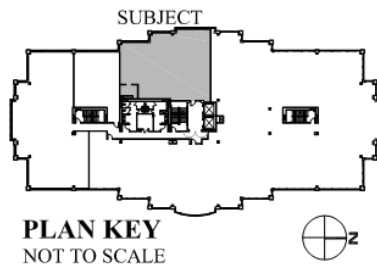
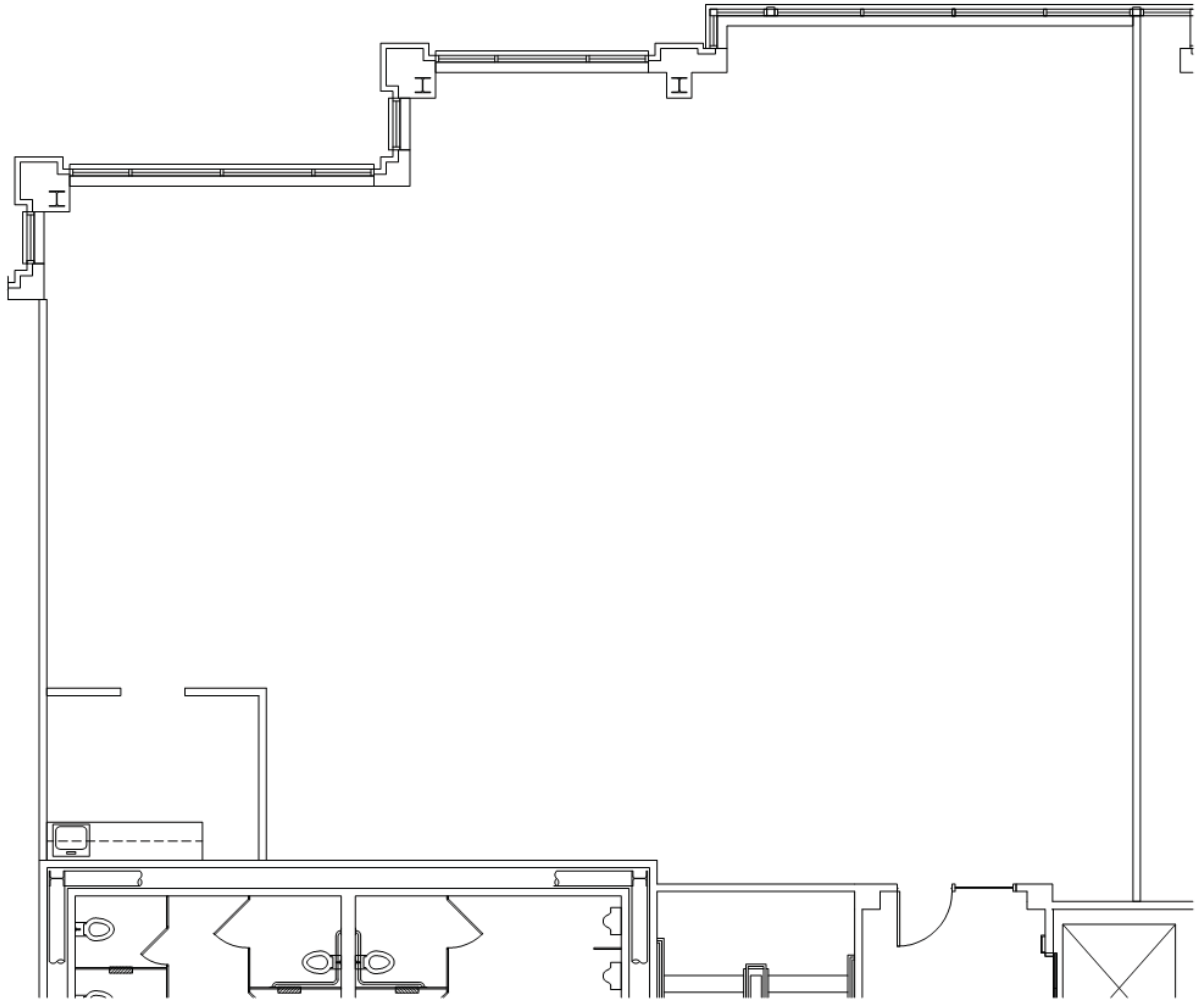
FEATURES Great access to I-5
Building conference room
4/1,000 SF parking ratio

ANNUAL RATE \$26.00/sqft
Full Service



PACIFIC PARKWAY CENTER

Building B • 12909 SW 68th Parkway, Suite 250 • Tigard OR 97223



AVAILABLE
2,873 SF TOTAL



PACTRUST

Pacific Realty Associates, L.P.

15350 SW Sequoia Parkway, Suite 300, Portland OR 97224 • 503-624-6300 • www.pactrust.com

The square footage and rates quoted herein are subject to change. PacTrust can only guarantee square footage and rates with a signed lease agreement.