

PACIFIC PARKWAY CENTER

40,250 Sq Ft Office



LOCATION Building A
6600 SW Hampton Street
Tigard OR 97223

LEASING CONTACT Sam Briggs
samb@pactrust.com
503-624-6300

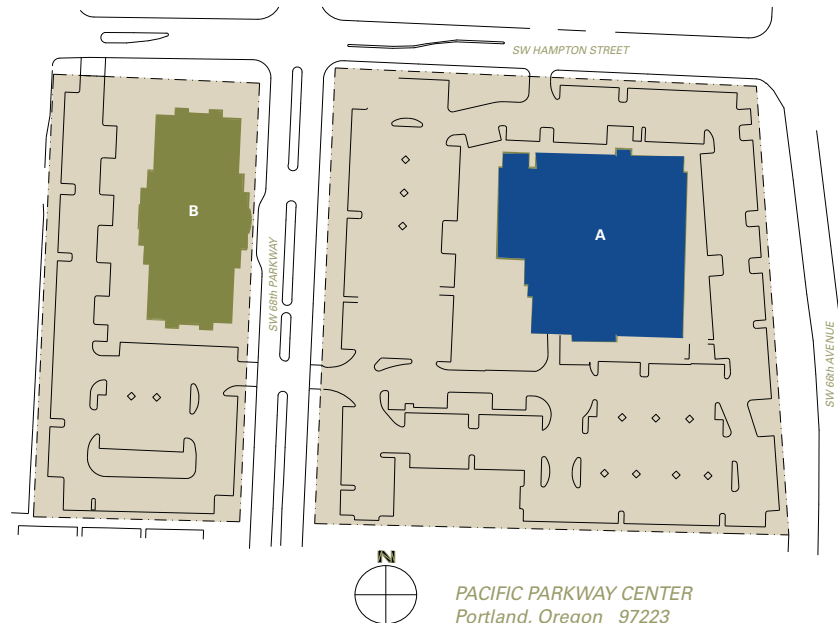
TOTAL SQ FT 40,250

Dave Hicks
daveh@pactrust.com
503-624-6300

FEATURES Creative office space
Immediate access to I-5 &
Highway 217

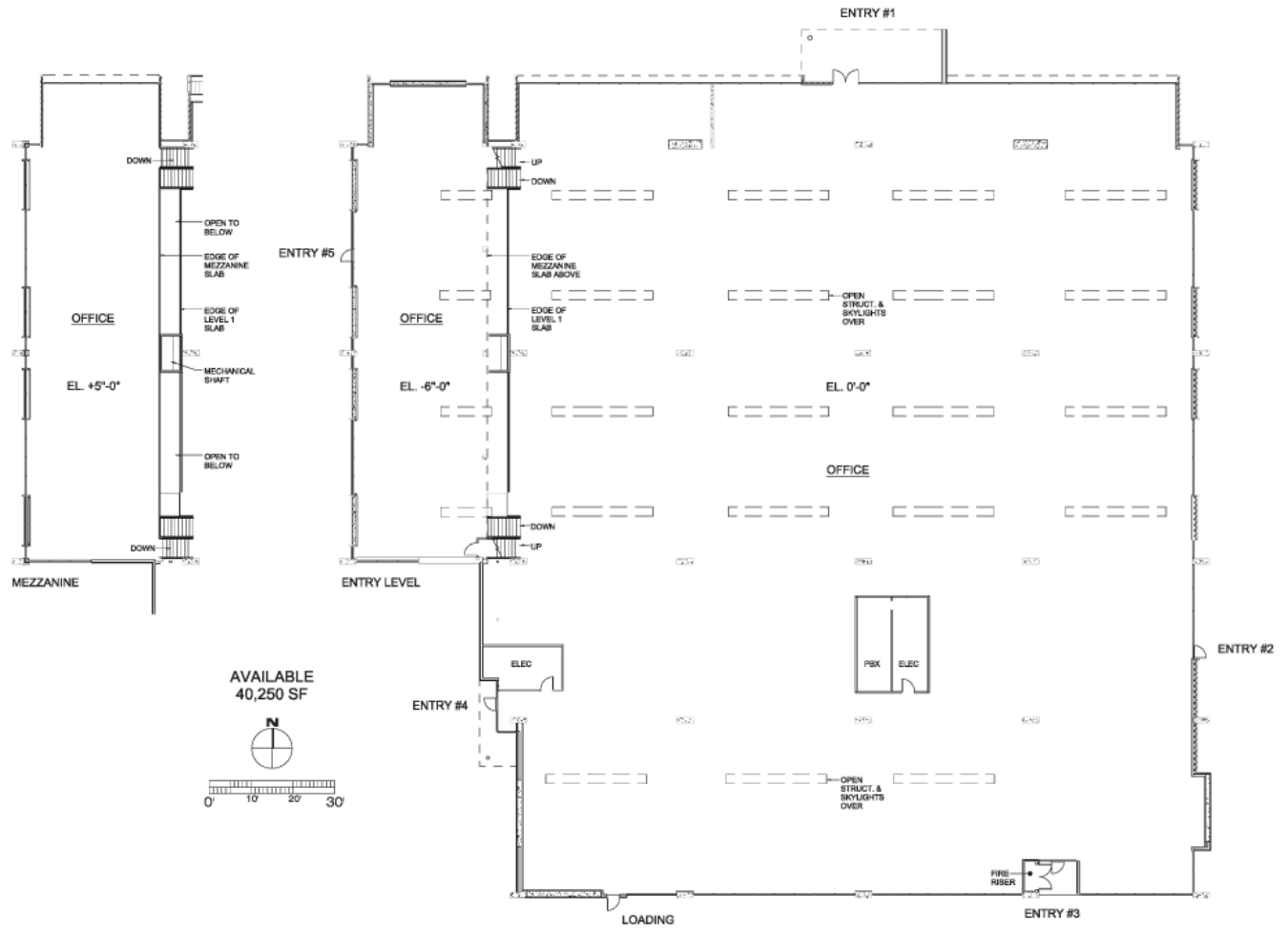
PARKING RATIO 4/1,000

MONTHLY RATE \$26.00
Full Service



PACIFIC PARKWAY CENTER

Building A • 6600 SW Hampton Street • Tigard OR 97223



PacTrust

Pacific Realty Associates, L.P.

15350 SW Sequoia Parkway, Suite 300, Portland OR 97224 • 503-624-6300 • www.pactrust.com

The square footage and rates quoted herein are subject to change. PacTrust can only guarantee square footage and rates with a signed lease agreement.