

# PACIFIC PARKWAY CENTER

41,300 Sq Ft Office

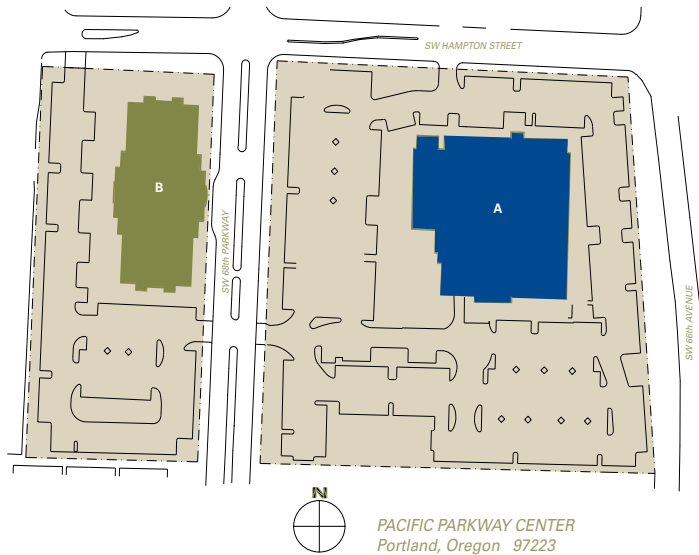


**LOCATION** Building A  
6600 SW Hampton Street  
Tigard OR 97223

**TOTAL SQ FT** 41,300

**FEATURES** Building available in its entirety  
Great access to I-5

**MONTHLY RATE** \$20.00  
Gross



**LEASING CONTACT** Sam Briggs  
samb@pactrust.com  
503-624-6300

Dave Hicks  
daveh@pactrust.com  
503-624-6300

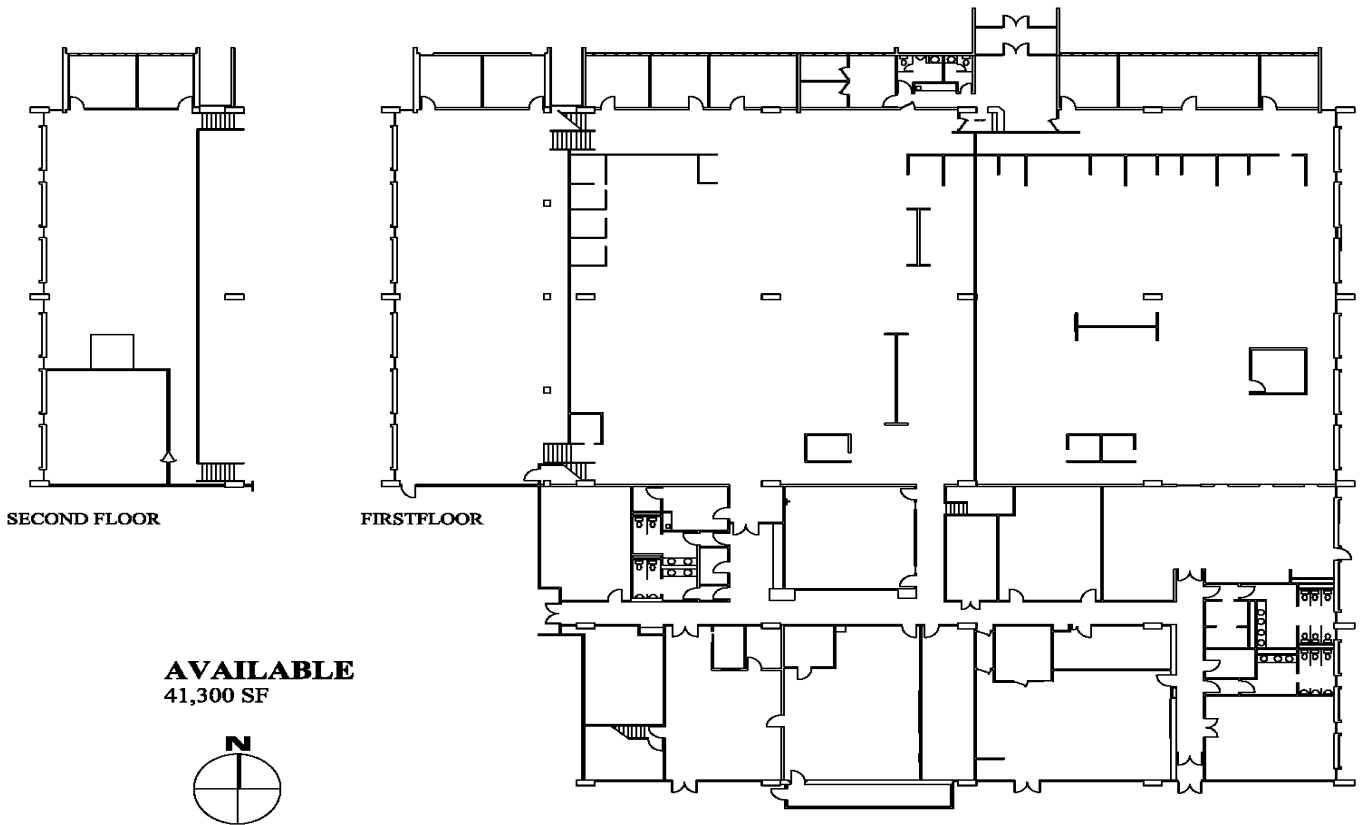
## BUILDING KEY

- A. 6600 SW Hampton Street
- B. 12909 SW 68th Parkway

Addresses are  
Tigard OR 97223

# PACIFIC PARKWAY CENTER

Building A • 6600 SW Hampton Street • Tigard OR 97223



## PACTRUST

Pacific Realty Associates, L.P.

15350 SW Sequoia Parkway, Suite 300, Portland OR 97224 • 503-624-6300 • [www.pactrust.com](http://www.pactrust.com)

The square footage and rates quoted herein are subject to change. PacTrust can only guarantee square footage and rates with a signed lease agreement.