

PACTRUST BUSINESS CENTER

11,056 Sq Ft Flex/Office



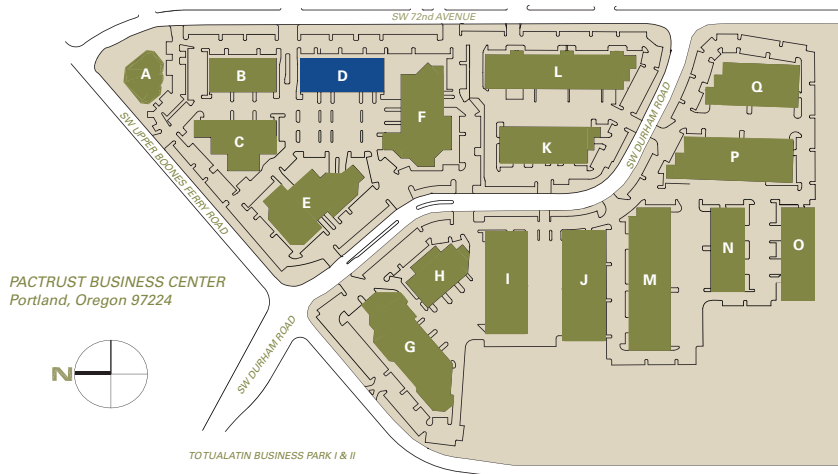
LOCATION
 Building D
 16165 SW 72nd Avenue
 Portland OR 97224

MONTHLY RATE
 \$0.60/sqft - Shell
 \$0.90/sqft - Office
 NNN

TOTAL SQ FT 11,056 SF
OFFICE SQ FT 5,347 SF
DOCK-HIGH DOORS 1
DRIVE-IN DOORS 1
CLEAR HEIGHT 18'
FEATURES End-cap space

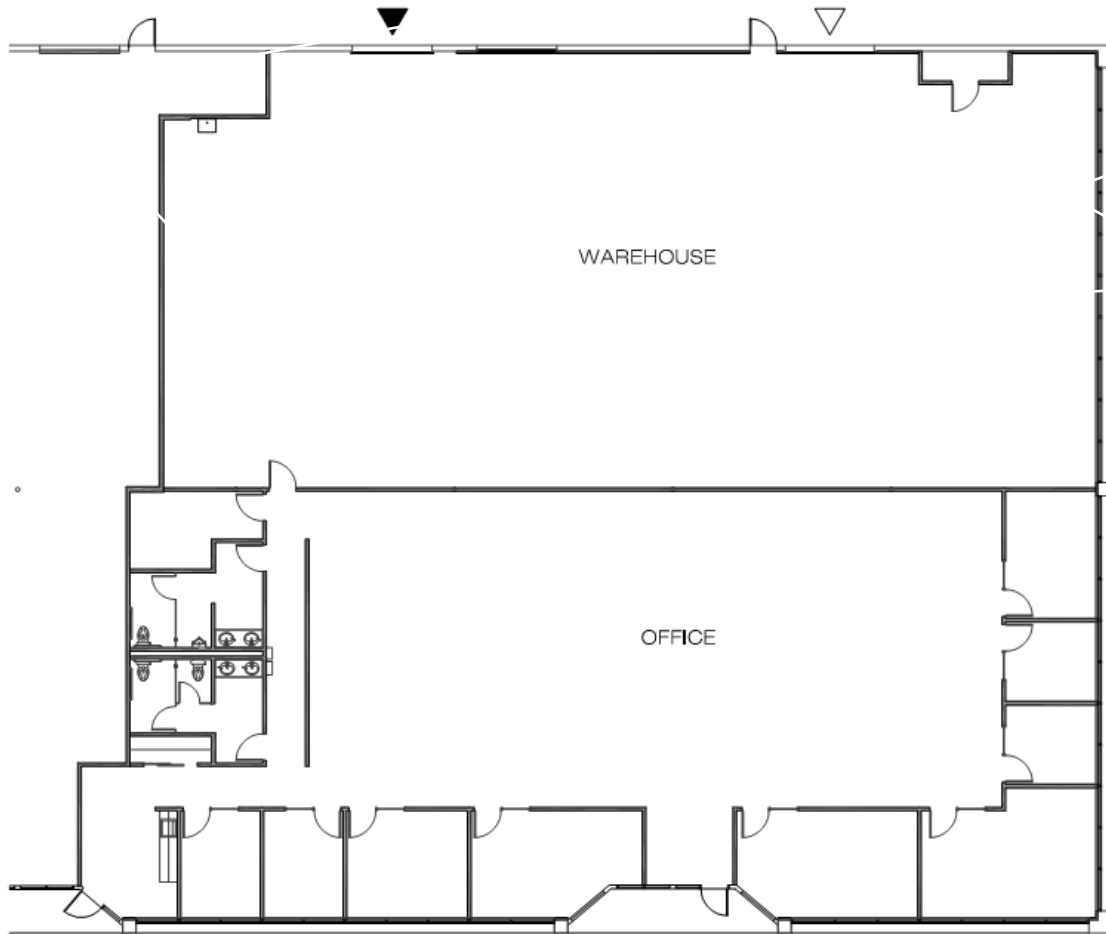
LEASING CONTACT
 Sam Briggs
 samb@pactrust.com
 503-624-6300

Dave Hicks
 daveh@pactrust.com
 503-624-6300



PACTRUST BUSINESS CENTER

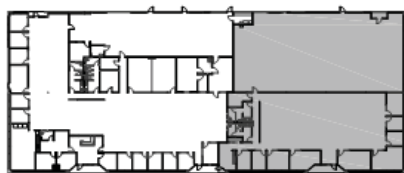
Building D • 16165 SW 72nd Avenue • Portland OR 97224



AVAILABLE

5,347 SF OFFICE

11,056 SF TOTAL

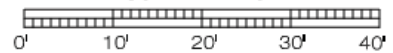


SUBJECT

WAREHOUSE CLEAR HEIGHT 18'-0"



SCALE 1" = 20'



▽ GRADE ACCESS

▼ DOCK ACCESS

BUILDING PLAN

PACTRUST

Pacific Realty Associates, L.P.

15350 SW Sequoia Parkway, Suite 300, Portland OR 97224 • 503-624-6300 • www.pactrust.com

The square footage and rates quoted herein are subject to change. PacTrust can only guarantee square footage and rates with a signed lease agreement.