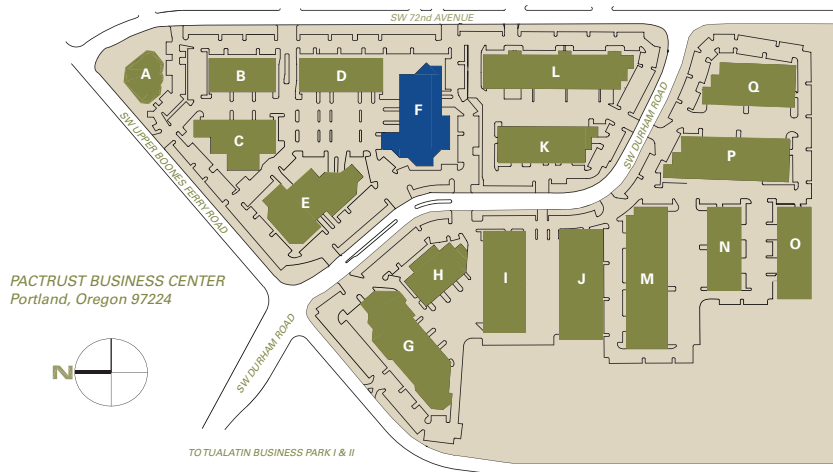


# PACTRUST BUSINESS CENTER

## 36,116 Sq Ft Flex



<b>LOCATION</b>	Building F 16505 SW 72nd Ave Portland OR 97224	<b>MONTHLY RATE</b>	\$0.60/sqft - Shell \$0.90/sqft - Office NNN
<b>TOTAL SQ FT</b>	36,116 SF	<b>LEASING CONTACT</b>	Sam Briggs samb@pactrust.com 503-624-6300
<b>OFFICE SQ FT</b>	28,855 SF		
<b>FEATURES</b>	Excellent exposure to 72nd Avenue Walking Distance to Bridgeport Village		
<b>CLEAR HEIGHT</b>	16'		Dave Hicks daveh@pactrust.com 503-624-6300
<b>DOCK-HIGH DOORS</b>	1		
<b>DRIVE-IN DOORS</b>	1		



# PACTRUST BUSINESS CENTER

Building F • 16505 SW 72nd Ave • Portland OR 97224

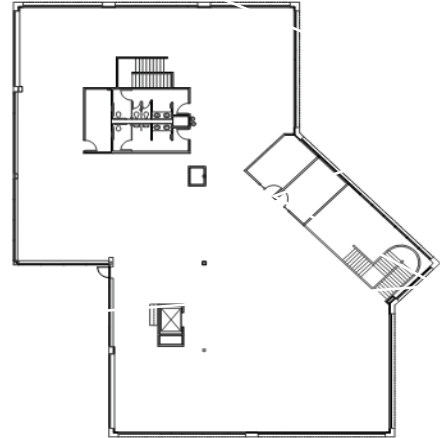
## AVAILABLE

36,116 SF TOTAL  
28,855 SF OFFICE

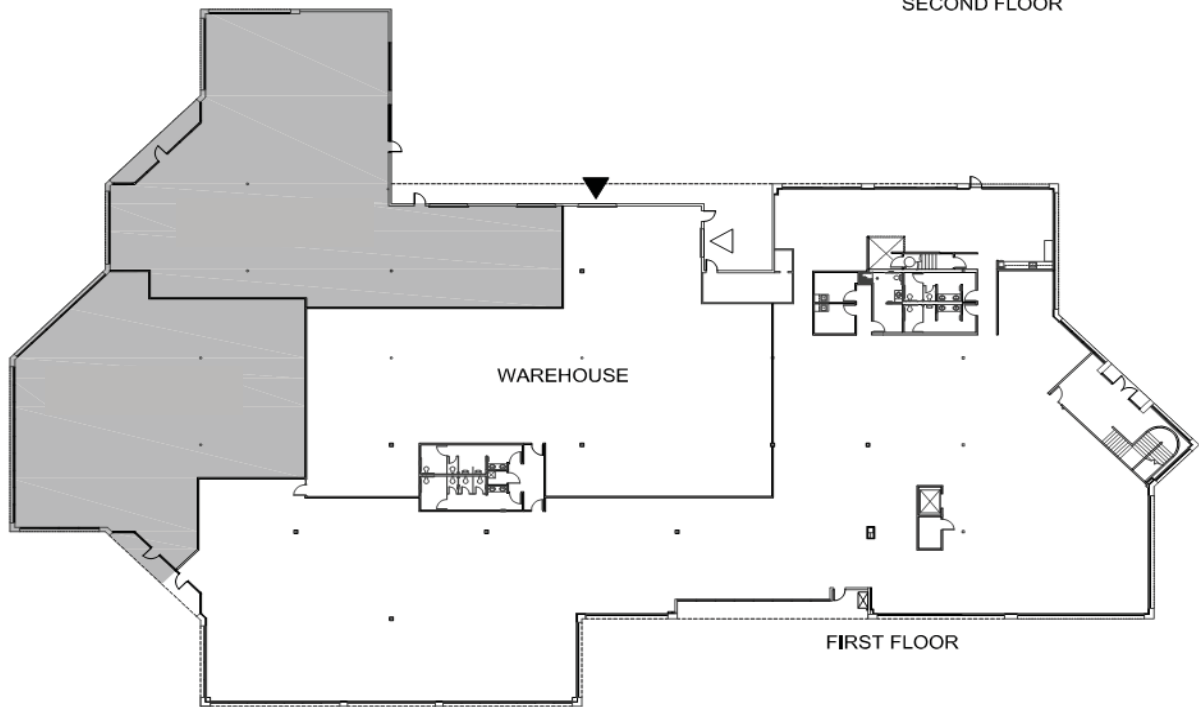


▽ GRADE ACCESS

▼ DOCK ACCESS



SECOND FLOOR



FIRST FLOOR

# PACTRUST

Pacific Realty Associates, L.P.

15350 SW Sequoia Parkway, Suite 300, Portland OR 97224 • 503-624-6300 • [www.pactrust.com](http://www.pactrust.com)

The square footage and rates quoted herein are subject to change. PacTrust can only guarantee square footage and rates with a signed lease agreement.