

PACTRUST BUSINESS CENTER

5,001 Sq Ft Warehouse/Distribution



LOCATION Building N
7236 SW Durham Road, Suite 600
Portland OR 97224

LEASING CONTACT Sam Briggs
samb@pactrust.com
503-624-6300

TOTAL SQ FT 5,001 SF
OFFICE SQ FT 667 SF

Dave Hicks
daveh@pactrust.com
503-624-6300

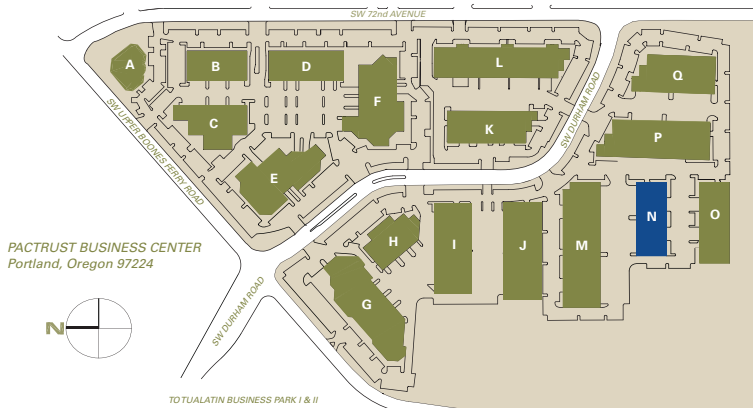
DOCK-HIGH DOORS 4
DRIVE-IN DOORS 2
FEATURES Easy access to I-5

MONTHLY RATE \$0.50/sqft - Shell
\$0.85/sqft - Office
NNN

BUILDING KEY

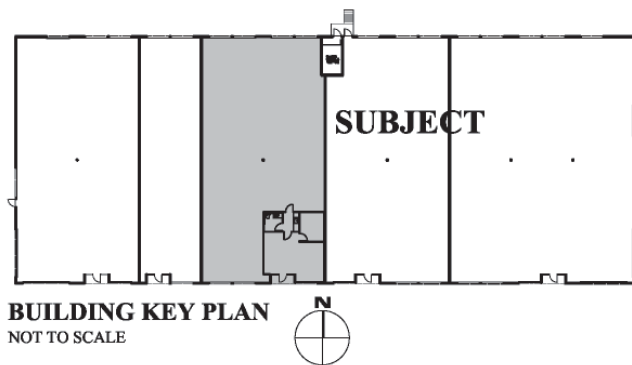
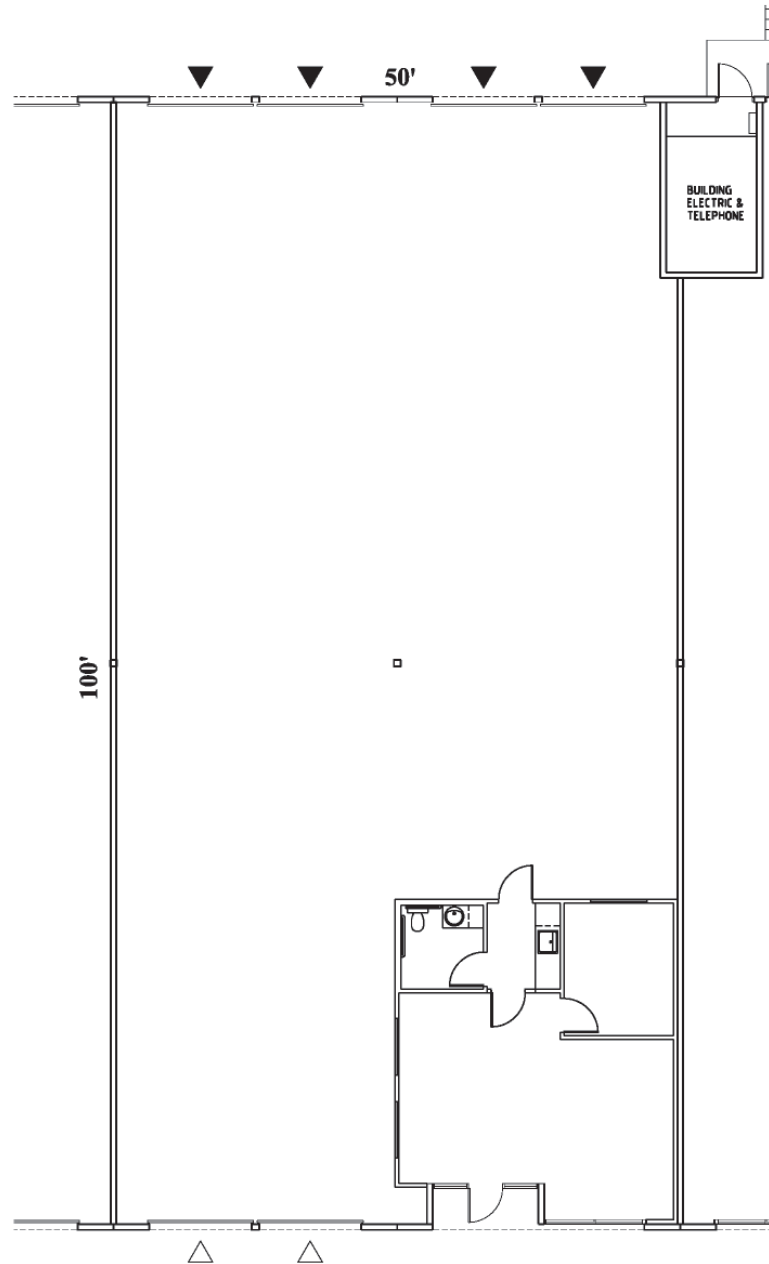
- A. 16101 SW 72nd Avenue
- B. 16125 SW 72nd Avenue
- C. 16150 - 16170 SW Upper Boones Ferry Road
- D. 16195 SW 72nd Avenue
- E. 16260 - 16280 SW Upper Boones Ferry Road
- F. 16505 - 16575 SW 72nd Avenue
- G. 7350 - 7390 SW Durham Road
- H. 7324 - 7340 SW Durham Road
- I. 7272 SW Durham Road
- J. 7250 SW Durham Road
- K. 7245 SW Durham Road
- L. 16655 SW 72nd Avenue
- M. 7244 SW Durham Road
- O. 7228 SW Durham Road
- P. 7216 SW Durham Road
- Q. 7204 SW Durham Road

All addresses are Portland, OR 97224



PACTRUST BUSINESS CENTER

Building N • 7236 SW Durham Road, Suite 600 • Portland OR 97224



BUILDING KEY PLAN
NOT TO SCALE

AVAILABLE
5,001 SF TOTAL
667 SF OFFICE



▽ GRADE ACCESS

▼ DOCK ACCESS

PACTRUST

Pacific Realty Associates, L.P.

15350 SW Sequoia Parkway, Suite 300, Portland OR 97224 • 503-624-6300 • www.pactrust.com

The square footage and rates quoted herein are subject to change. PacTrust can only guarantee square footage and rates with a signed lease agreement.