

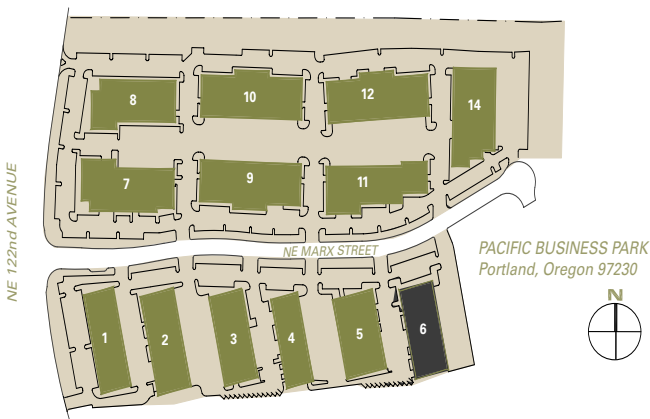
# PACIFIC BUSINESS PARK

## 2,500 Sq Ft Warehouse/Distribution



<b>LOCATION</b>	Building 6 12730 NE Marx Street Portland OR 97230
<b>TOTAL SQ FT</b>	2,500 SF
<b>OFFICE SQ FT</b>	850 SF
<b>DRIVE-IN DOORS</b>	2
<b>FEATURES</b>	Easy access to I-205 & I-84 10 minutes to PDX
<b>MONTHLY RATE</b>	\$0.40/sqft - Shell \$0.75/sqft - Office NNN

**LEASING CONTACT** Matt Krueger  
mattk@pactrust.com  
503-624-6300



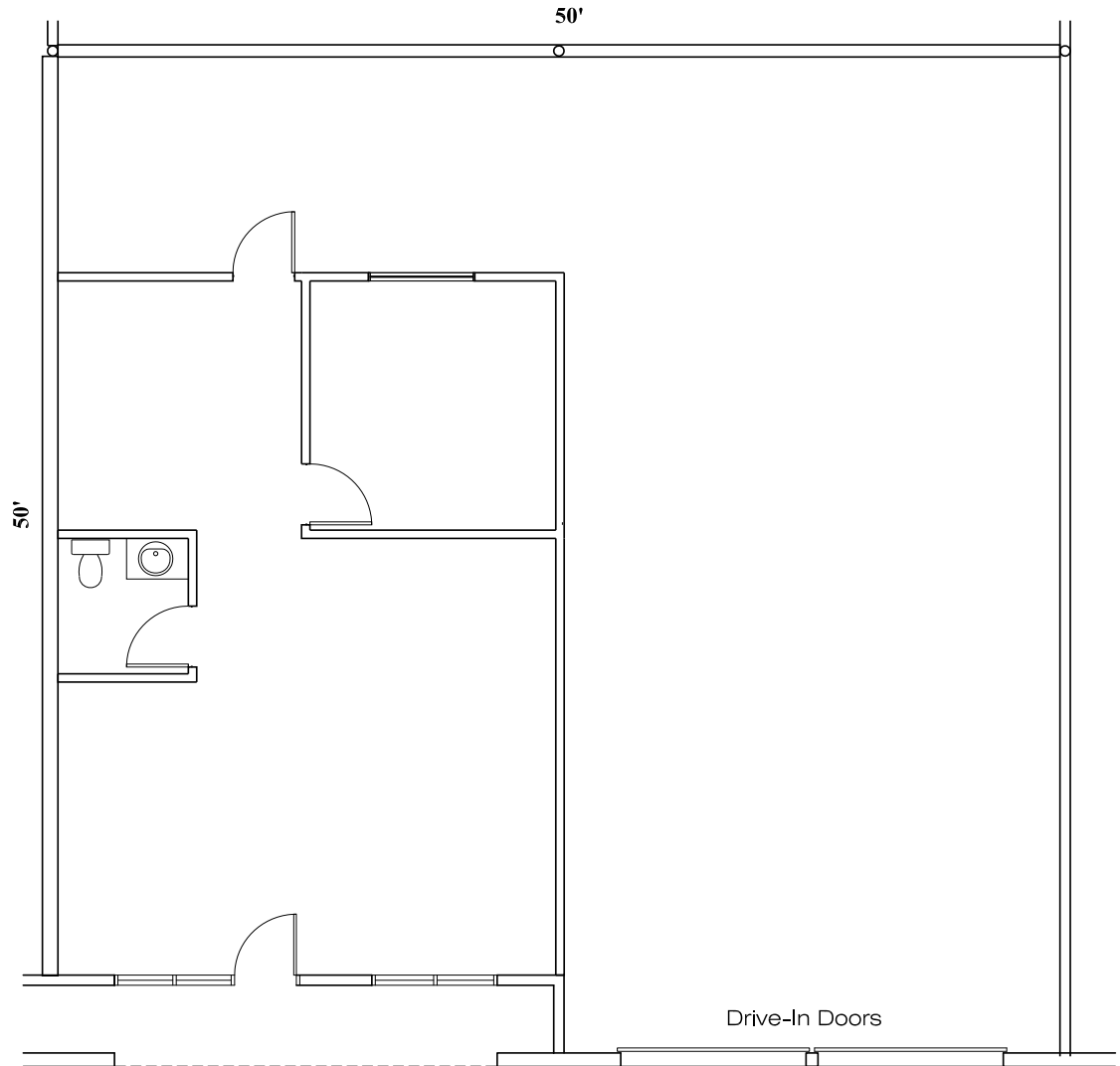
### BUILDING KEY

1. 4900 - 4916 NE 122nd Avenue
2. 12302 - 12360 NE Marx Street
3. 12402 - 12480 NE Marx Street
4. 12502 - 12570 NE Marx Street
5. 12602 - 12670 NE Marx Street
6. 12702 - 12780 NE Marx Street
7. 12207 - 12239 NE Marx Street
8. 5208 NE 122nd Avenue
9. 12403 - 12421 NE Marx Street
10. 12439 - 12449 NE Marx Street
11. 12505 - 12595 NE Marx Street
12. 12605 - 12695 NE Marx Street
14. 12630 - 12650 NE Marx Street

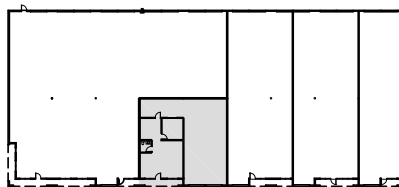
All addresses are Portland, OR 97230

# PACIFIC BUSINESS PARK

Building 6 • 12730 NE Marx Street • Portland OR 97230



**AVAILABLE**  
2,500 SF TOTAL  
850 SF OFFICE



SUBJECT

**BUILDING KEY PLAN**  
NOT TO SCALE



## PACTRUST

Pacific Realty Associates, L.P.

15350 SW Sequoia Parkway, Suite 300, Portland OR 97224 • 503-624-6300 • [www.pactrust.com](http://www.pactrust.com)

The square footage and rates quoted herein are subject to change. PacTrust can only guarantee square footage and rates with a signed lease agreement.