

# PACIFIC BUSINESS PARK

## 7,530 Sq Ft Warehouse/Distribution



**LOCATION**

Building 9  
12403 NE Marx Street  
Portland OR 97230

**FEATURES**

10 minutes to PDX

**MONTHLY RATE**

\$0.55/sqft - Shell  
\$0.85/sqft - Office  
NNN

**TOTAL SQ FT**  
**OFFICE SQ FT**

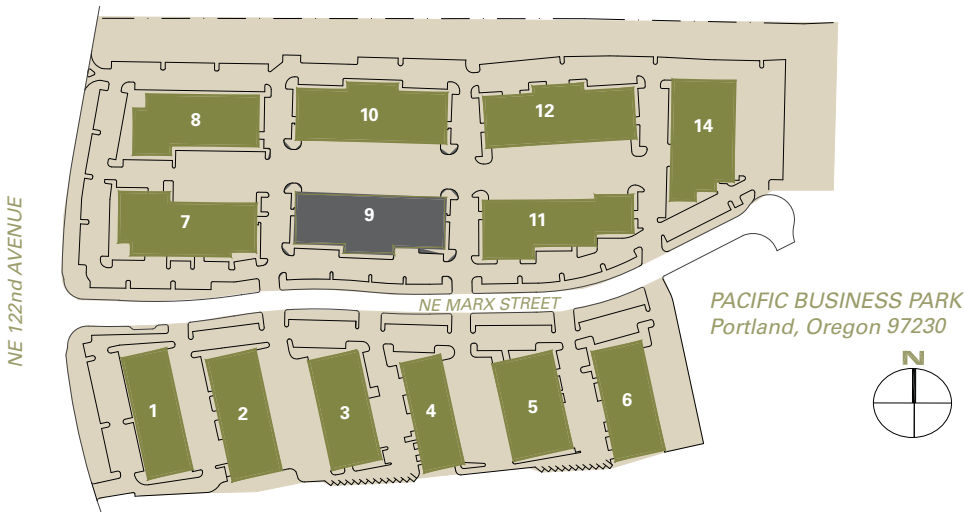
7,530 SF  
1,292 SF

**LEASING CONTACT**

Matt Krueger  
matk@pactrust.com  
503-624-6300

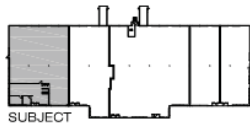
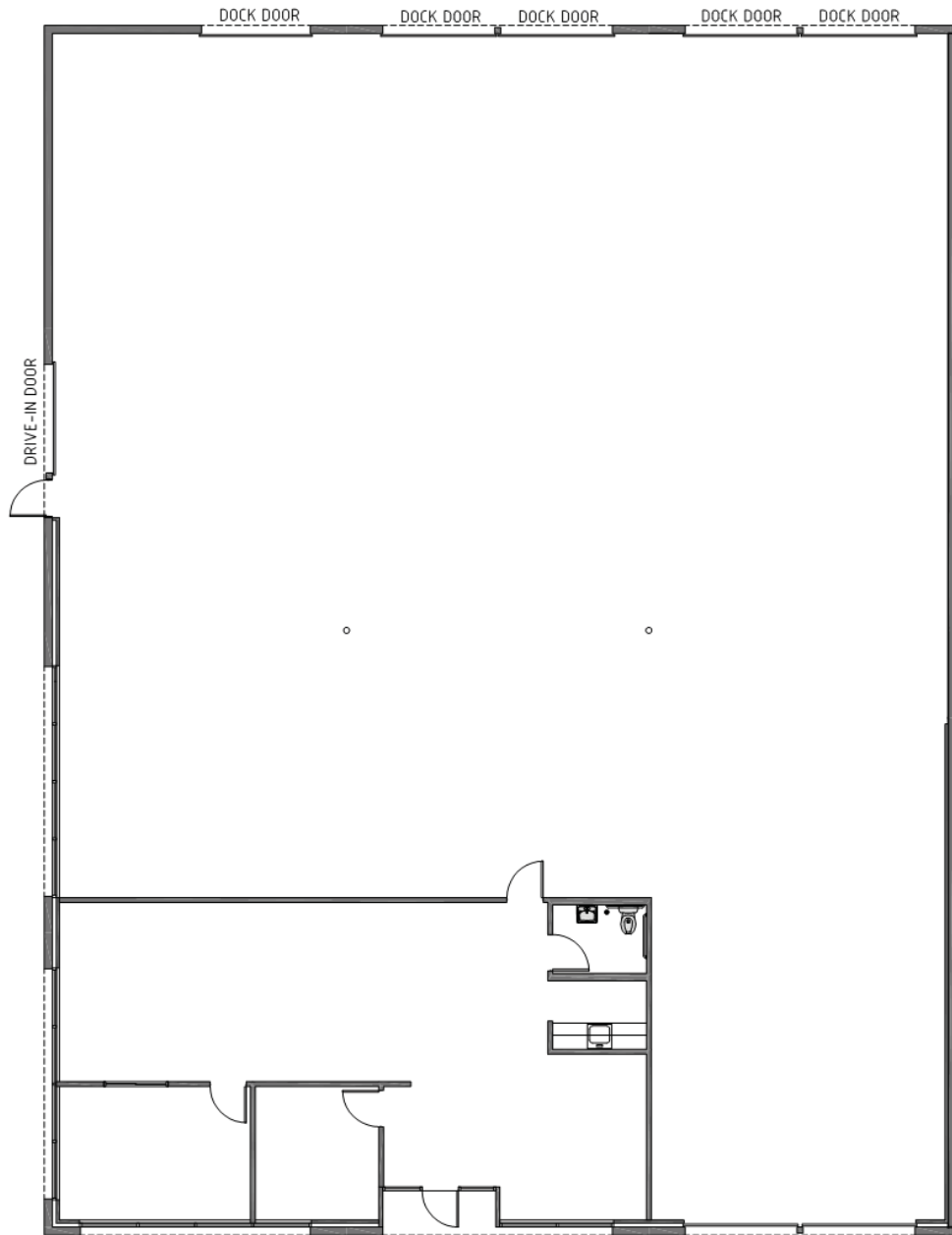
**DOCK-HIGH DOORS**  
**DRIVE-IN DOORS**

5  
3



# PACIFIC BUSINESS PARK

Building 9 • 12403 NE Marx Street • Portland OR 97230



BUILDING KEY PLAN  
NOT TO SCALE



AVAILABLE  
1,292 SF OFFICE  
7,530 SF TOTAL

## PACTRUST

Pacific Realty Associates, L.P.

15350 SW Sequoia Parkway, Suite 300, Portland OR 97224 • 503-624-6300 • [www.pactrust.com](http://www.pactrust.com)

The square footage and rates quoted herein are subject to change. PacTrust can only guarantee square footage and rates with a signed lease agreement.