

PACIFIC CORPORATE CENTER

2,244 Sq Ft Office



LOCATION

Building 17
15350 SW Sequoia Parkway, Suite 380
Portland OR 97224

LEASING CONTACT

Sam Briggs
samb@pactrust.com
503-624-6300

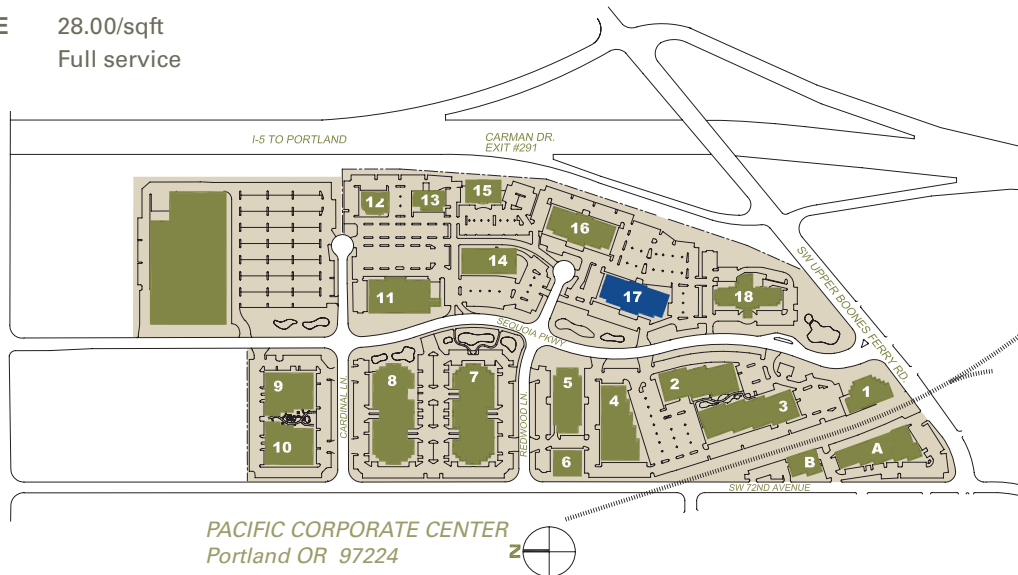
TOTAL SQ FT FEATURES

2,244 SF
Class A office
Building conference room
Immediate access to I-5

Dave Hicks
daveh@pactrust.com
503-624-6300

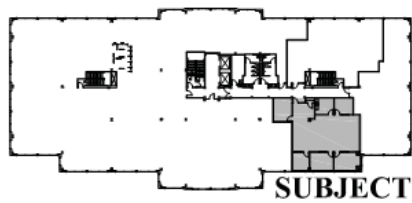
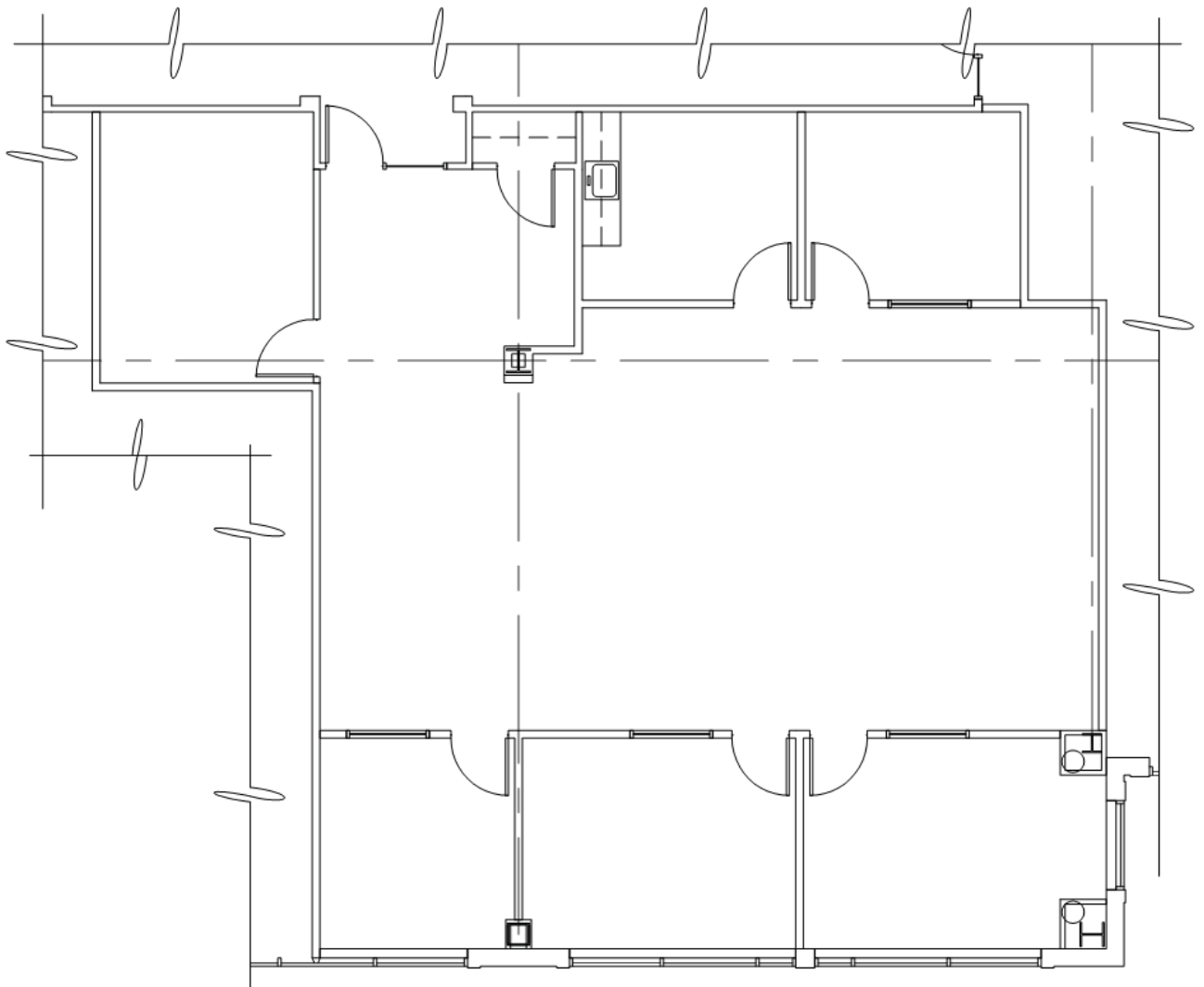
ANNUAL RATE

28.00/sqft
Full service



PACIFIC CORPORATE CENTER

Building 17 • 15350 SW Sequoia Parkway, Suite 380 • Portland OR 97224



BUILDING PLAN



AVAILABLE

2,244 SF TOTAL



PACTRUST

Pacific Realty Associates, L.P.

15350 SW Sequoia Parkway, Suite 300, Portland OR 97224 • 503-624-6300 • www.pactrust.com

The square footage and rates quoted herein are subject to change. PacTrust can only guarantee square footage and rates with a signed lease agreement.