

# PACIFIC CORPORATE CENTER

## 2,577 Sq Ft Office



### LOCATION

Building 17  
15350 SW Sequoia Parkway, Suite 380  
Portland OR 97224

### LEASING CONTACT

Sam Briggs  
samb@pactrust.com  
503-624-6300

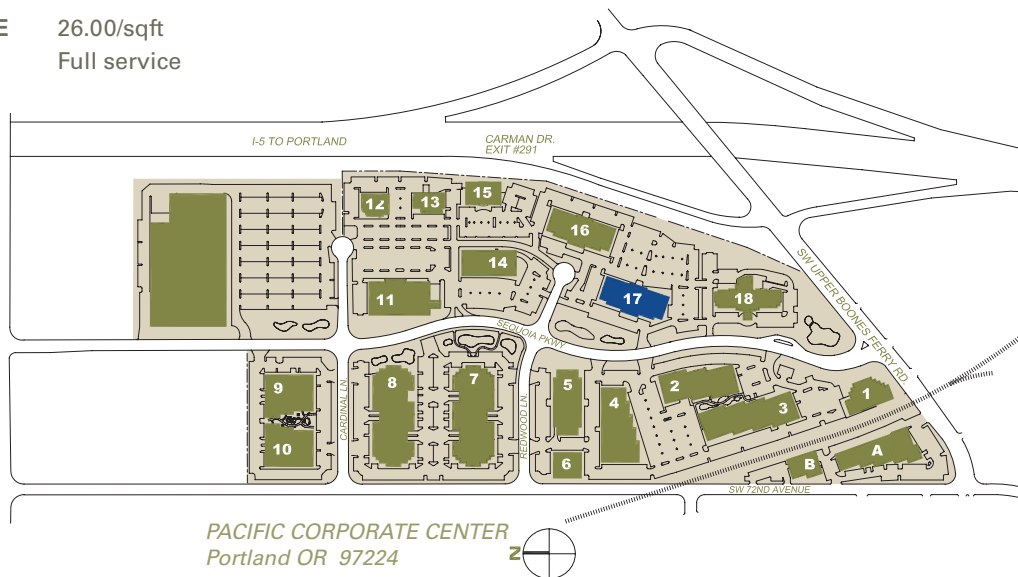
### TOTAL SQ FT FEATURES

2,577 SF  
Class A office  
Building conference room  
Immediate access to I-5

Dave Hicks  
daveh@pactrust.com  
503-624-6300

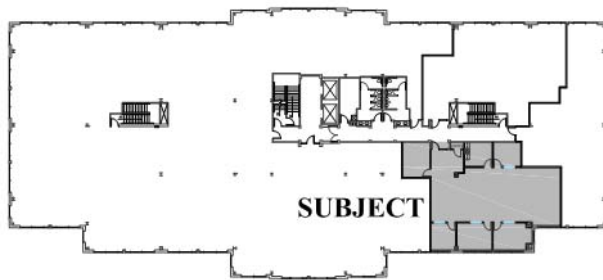
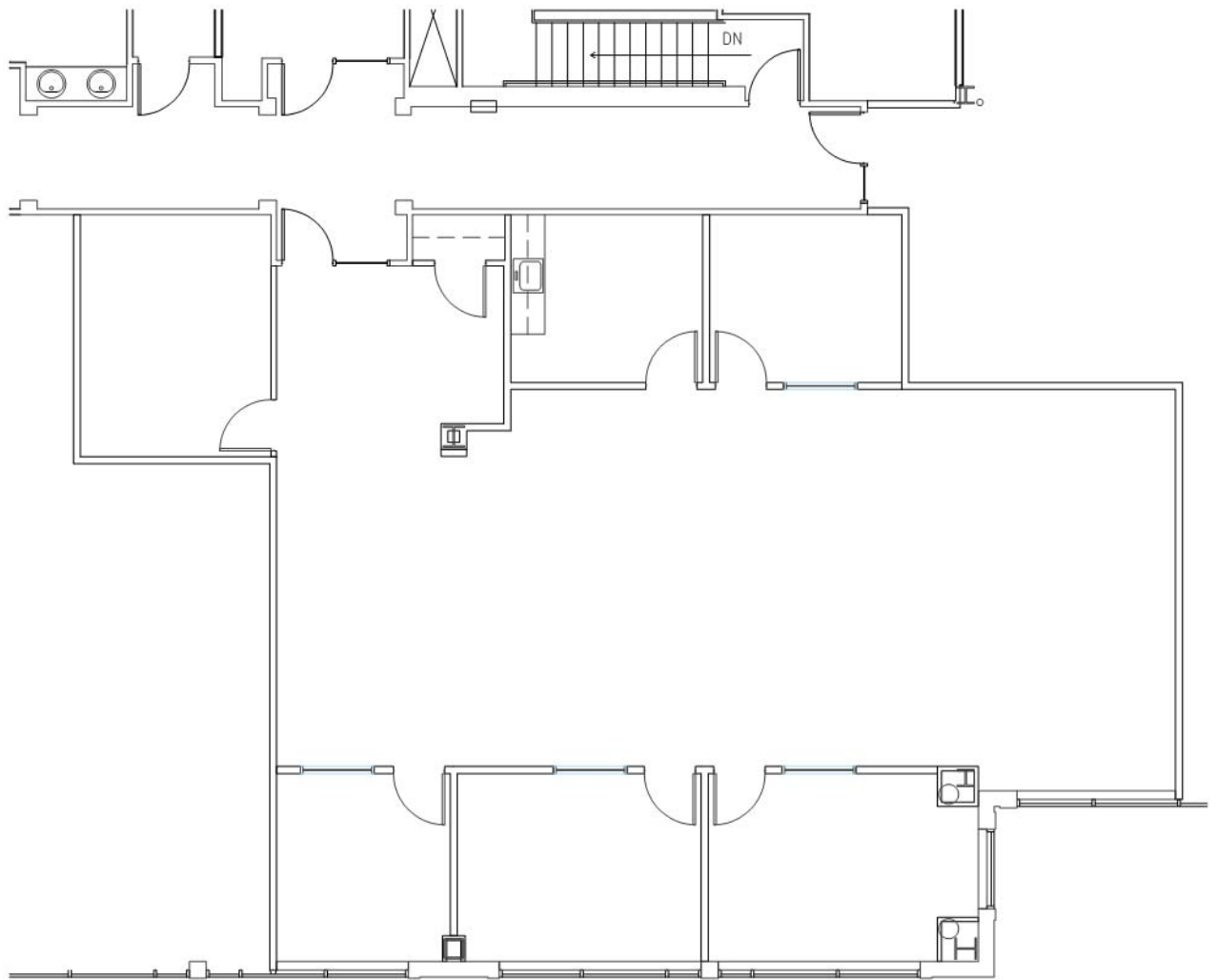
### ANNUAL RATE

26.00/sqft  
Full service



# PACIFIC CORPORATE CENTER

Building 17 • 15350 SW Sequoia Parkway, Suite 380 • Portland OR 97224



**BUILDING PLAN**



**AVAILABLE**

2,577 SF TOTAL



**PACTRUST**

Pacific Realty Associates, L.P.

15350 SW Sequoia Parkway, Suite 300, Portland OR 97224 • 503-624-6300 • [www.pactrust.com](http://www.pactrust.com)

The square footage and rates quoted herein are subject to change. PacTrust can only guarantee square footage and rates with a signed lease agreement.