

# PACIFIC CORPORATE CENTER

## 7,002 Sq Ft Office



**LOCATION** Building 3  
15575 SW Sequoia Parkway, Suite 180  
Portland OR 97224

**LEASING CONTACT** Sam Briggs  
samb@pactrust.com  
503-624-6300

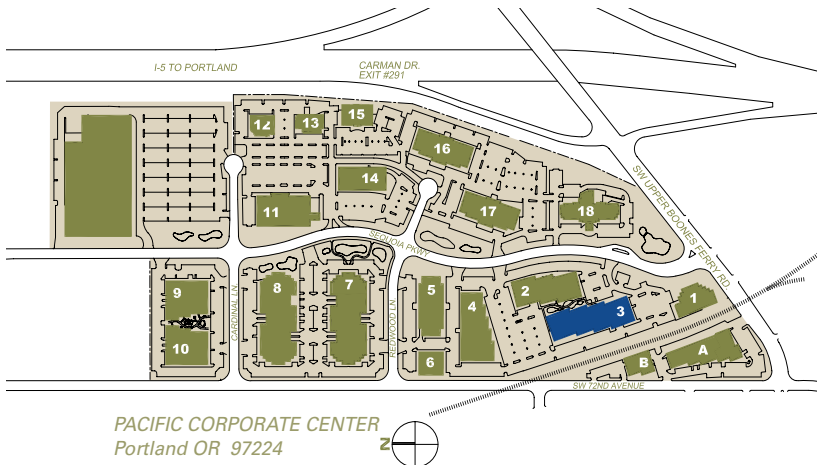
**TOTAL SQ FT** 7,002 SF  
**FEATURES** Located at end of building  
Easy access to I-5  
Work stations in place

Dave Hicks  
daveh@pactrust.com  
503-624-6300

**ANNUAL RATE** \$19.00/sqft  
Full service

### BUILDING KEY

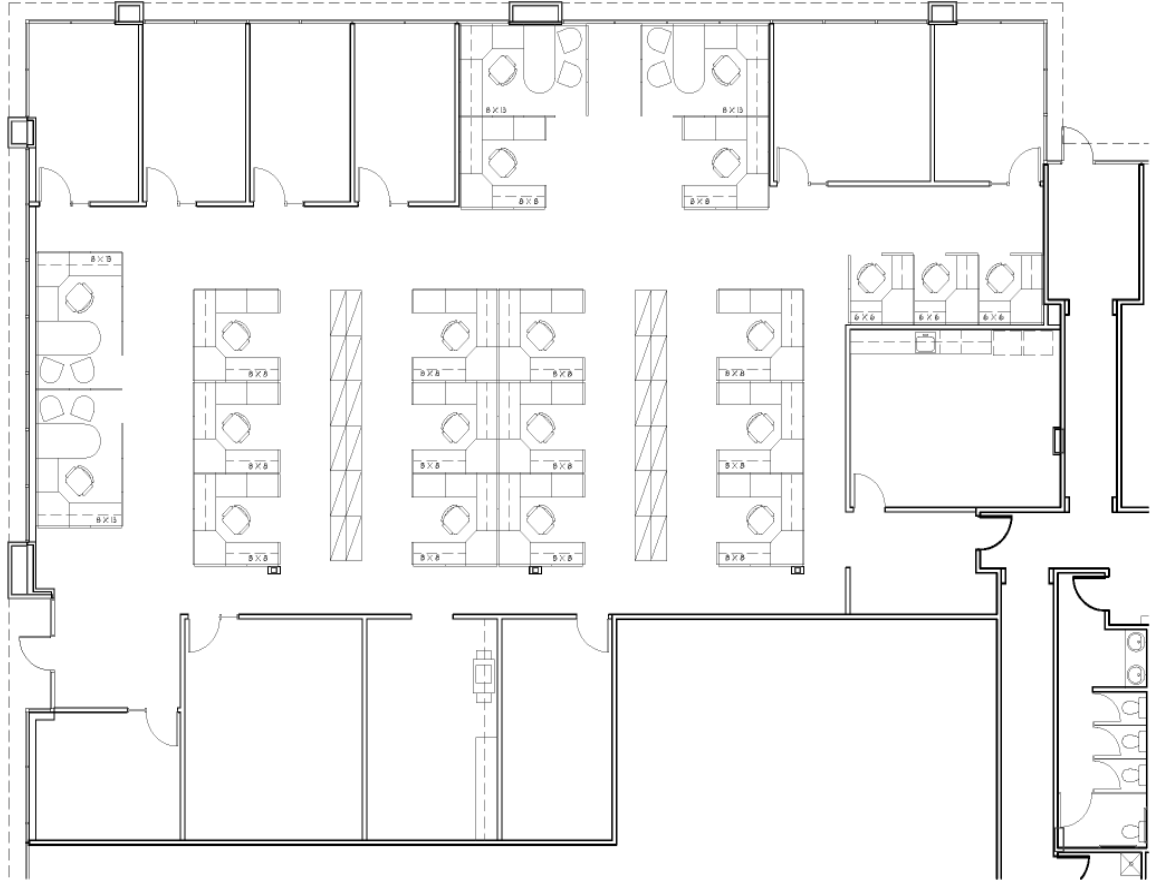
1. 15755 SW Sequoia Parkway
2. 15495 SW Sequoia Parkway
3. 15575 SW Sequoia Parkway
4. 15353 SW Sequoia Parkway
5. 15333 SW Sequoia Parkway
6. 7000 SW Redwood Lane
7. 15115 SW Sequoia Parkway
8. 15055 SW Sequoia Parkway
9. 14945 SW Sequoia Parkway
10. 7007 SW Cardinal Lane
11. 15060 SW Sequoia Parkway
12. 6600 SW Cardinal Lane
13. 6610 SW Cardinal Lane
14. 15230 SW Sequoia Parkway
15. 6640 SW Redwood Lane
16. 6650 SW Redwood Lane
17. 15350 SW Sequoia Parkway
18. 15686 SW Sequoia Parkway
- A. 15862 SW 72nd Avenue
- B. 15500 SW 72nd Avenue



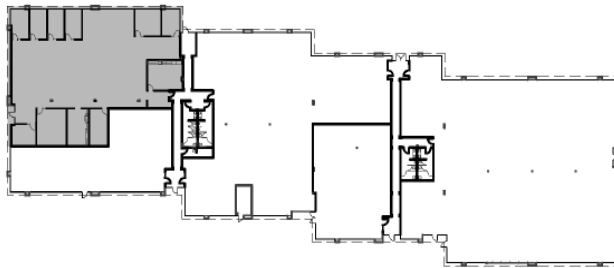
All addresses are Portland, OR 97224

# PACIFIC CORPORATE CENTER

Building 3 • 15575 SW Sequoia Parkway, Suite 180 • Portland OR 97224



SUBJECT



SHELL PLAN  
NOT TO SCALE

AVAILABLE  
7,002 SF TOTAL



## PACTRUST

Pacific Realty Associates, L.P.

15350 SW Sequoia Parkway, Suite 300, Portland OR 97224 • 503-624-6300 • [www.pactrust.com](http://www.pactrust.com)

The square footage and rates quoted herein are subject to change. PacTrust can only guarantee square footage and rates with a signed lease agreement.