

PACIFIC CORPORATE CENTER

2,676 Sq Ft Flex Office



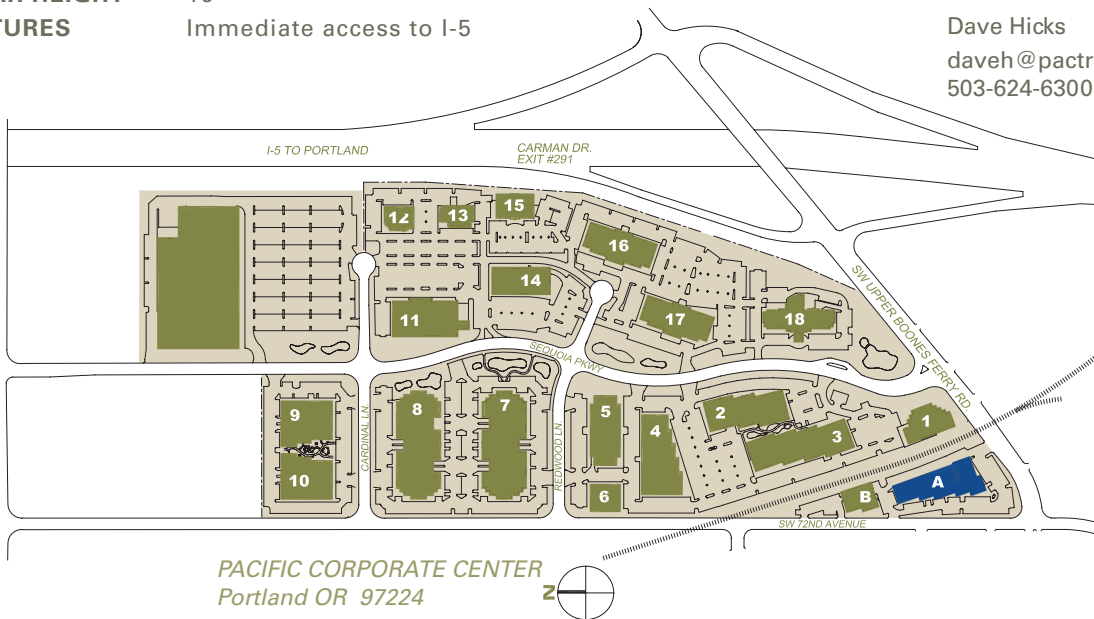
LOCATION Building A
15688 SW 72nd Avenue
Portland OR 97224

TOTAL SQ FT 2,676
OFFICE SQ FT 1,824
DRIVE-IN DOORS 1
CLEAR HEIGHT 16'
FEATURES Immediate access to I-5

MONTHLY RATE \$0.60/sqft - Shell
\$0.85/sqft - Office

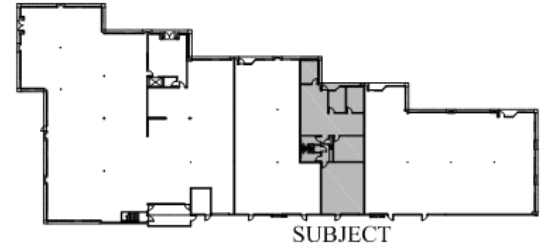
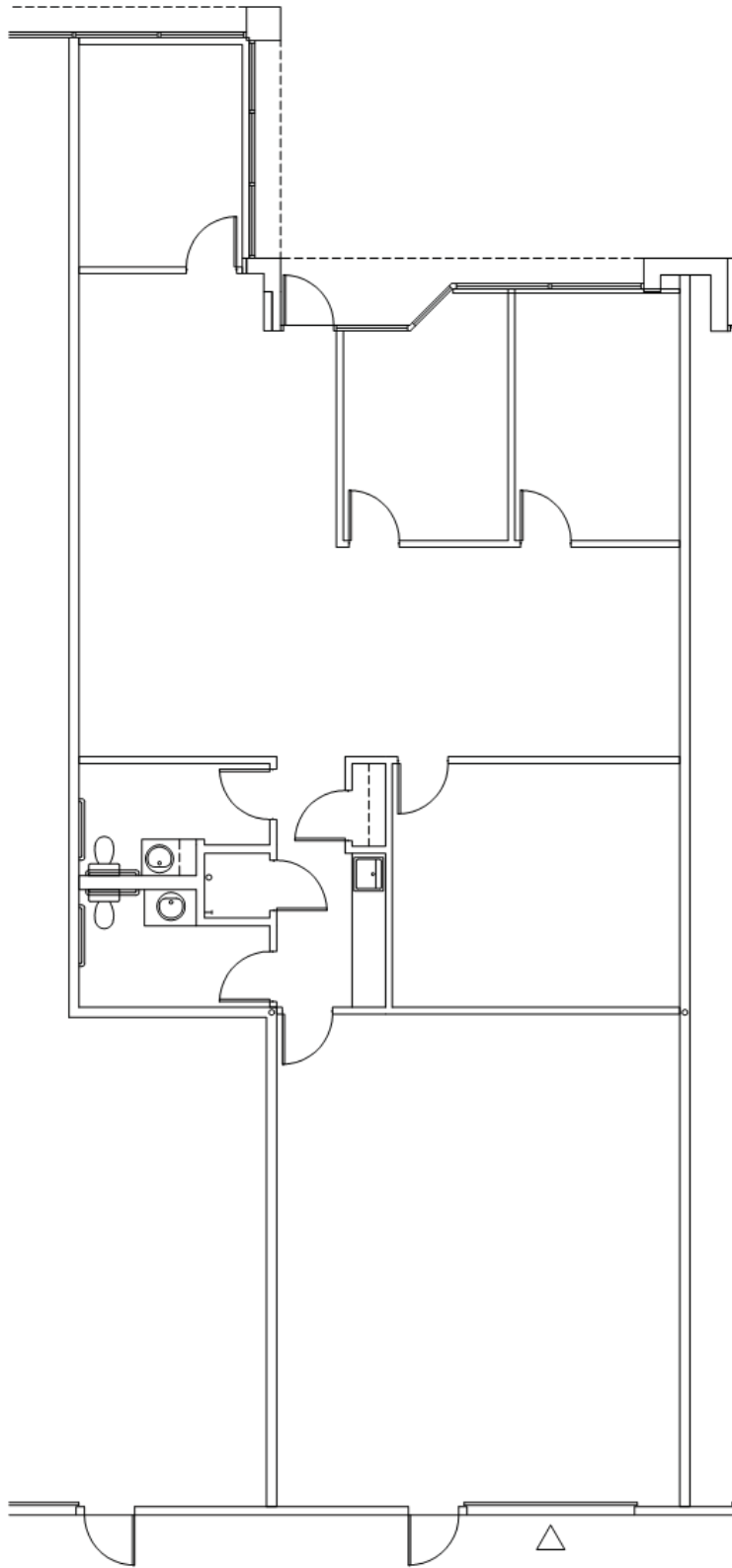
LEASING CONTACT Sam Briggs
samb@pactrust.com
503-624-6300

Dave Hicks
daveh@pactrust.com
503-624-6300



PACIFIC CORPORATE CENTER

Building A • 15688 SW 72nd Avenue • Portland OR 97224



BUILDING PLAN



AVAILABLE

1,824 SF OFFICE
2,676 SF TOTAL



▽ GRADE ACCESS

▼ DOCK ACCESS

PACTRUST

Pacific Realty Associates, L.P.

15350 SW Sequoia Parkway, Suite 300, Portland OR 97224 • 503-624-6300 • www.pactrust.com

The square footage and rates quoted herein are subject to change. PacTrust can only guarantee square footage and rates with a signed lease agreement.