

TUALATIN BUSINESS CENTER II

6,528 Sq Ft Warehouse

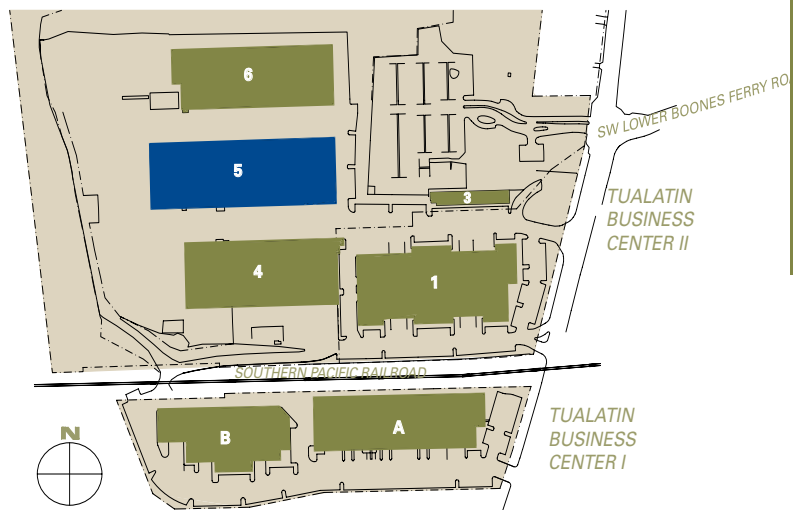


| | | | |
|-----------------------|---|------------------------|--|
| LOCATION | Building 5 18147 SW Boones Ferry Road Portland OR 97224 | LEASING CONTACT | Sam Briggs samb@pactrust.com 503-624-6300 |
| TOTAL SQ FT | 6,528 SF | | Dave Hicks daveh@pactrust.com 503-624-6300 |
| OFFICE SQ FT | 621 SF | | |
| FEATURES | Great access to I-5 & I-205 Crane served | | |
| DRIVE-IN DOORS | 3 | | |
| MONTHLY RATE | \$.45/sqft Gross | | |

BUILDING KEY

- A. 18277 - 18379 SW Boones Ferry Road
- B. 18383 - 18407 SW Boones Ferry Road
- 1. 18151 - 18199 SW Boones Ferry Road
- 3. 18101 SW Boones Ferry Road
- 4. 18201 - 18227 SW Boones Ferry Road
- 5. 18135 - 18147 SW Boones Ferry Road
- 6. 18129 SW Boones Ferry Road

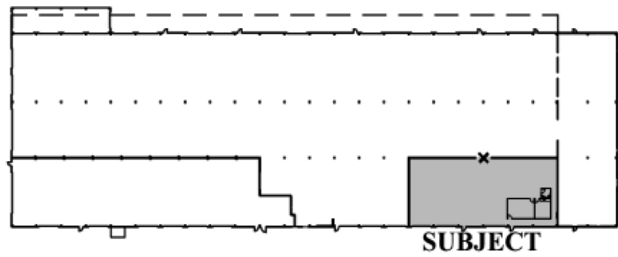
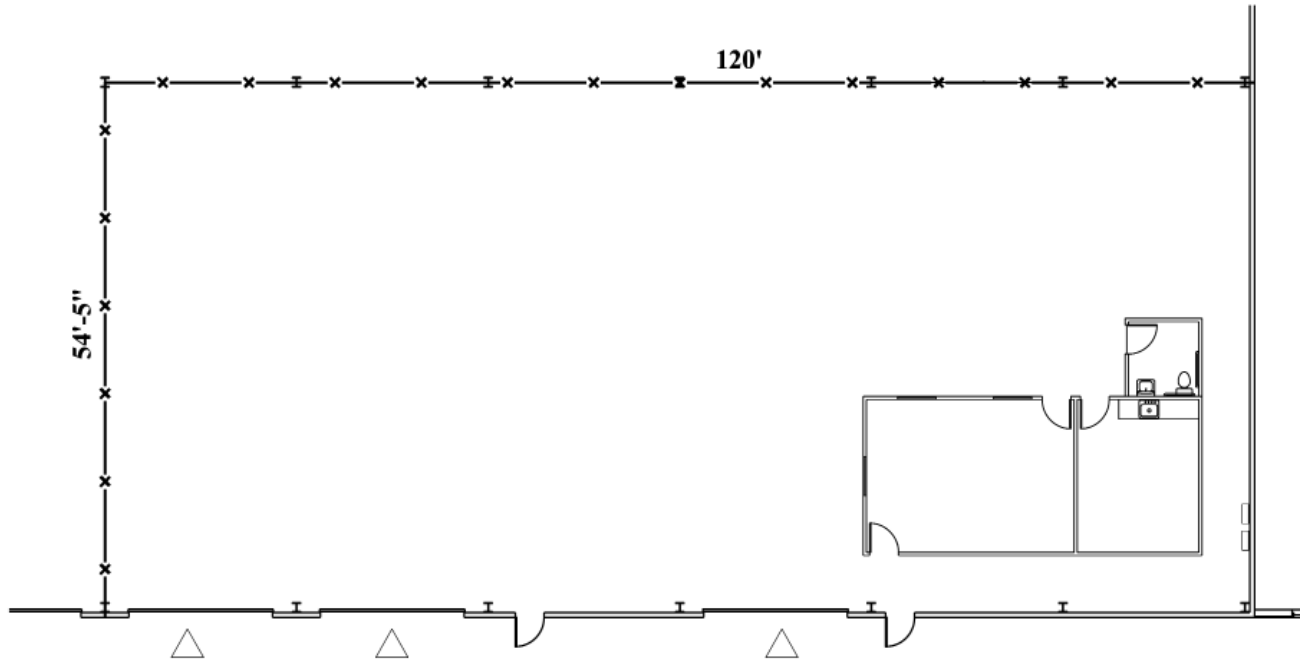
All addresses are Portland, OR 97224



TUALATIN BUSINESS CENTERS I & II
Portland, Oregon 97224

TUALATIN BUSINESS CENTER II

Building 5 • 18147 SW Boones Ferry Road • Portland OR 97224



BUILDING PLAN

AVAILABLE
621 SF OFFICE
6,528 SF TOTAL



▽ GRADE ACCESS

▼ DOCK ACCESS